

Centrometal

HEATING TECHNIQUE

Centrometal d.o.o. - Glavna 12, 40306 Macinec, Croatia, tel: +385 40 372 600, fax: +385 40 372 611



TECHNICAL INSTRUCTIONS

For installation, setup and control of
the solar control unit **Cm-SOL**



Cm-SOL

Thank you for purchasing the product of Centrometal d.o.o.

Please read these technical manuals carefully so that you can use and adjust this control unit as easily as possible. Once you have read the manuals, place them in an appropriate place where you can easily find them if you need further information on the operation and use of control unit.

Please make sure that the control unit is discontinued after the end of use to reduce the pollution of the environment.

CONTENT

INTRODUCTION	3
TECHNICAL CHARACTERISTICS	4
BASIC PARTS	5
CONTROL UNIT INSTALLATION	7
BATTERY REPLACEMENT	8
CONTROL UNIT DESCRIPTION	9
CONTROL UNIT ACTUATION	10
MAIN DISPLAY / SYMBOLS	11
SYMBOLS OF THE SYSTEM FUNCTION	14
MAIN MENU	17
1. TANK	18
2. COLLECTOR	21
3. OPERATION	24
4. HYSTORY	34
5. DISPLAY	34
6. SAVE/LOAD	36
7. INFO	37
MENUS FOR SYSTEM CONFIGURATION	40
8. INSTALLATION	40
8.1. SYSTEM COMPONENTS	41
8.2. COLLECTOR	49
8.3. TANK	53
8.4. DHW HEATING	64
8.5. RECIRCULATION	66
8.6. LEGIONELLA PROTECTION	68
8.7. ENERGY MEASUREMENT	70
8.8. MANUAL TEST	72
8.9. SAVE/LOAD	73
8.10. INFO	74
8.11. INTERNET SUPERVISION	77
8.12. COUNTER RESET	78
ERROR LIST	79
WARNING LIST	82
INFORMATION LIST	83
ELECTRICAL CONNECTION	84
EXAMPLE OF SELECTING THE SOLAR SYSTEM COMPONENTS	86
COMMISSIONING LIST	90

INTRODUCTION

Solar control unit is intended for heating the DHW tank, accumulation tank (with or without built-in DHW tank) or swimming pool through solar collectors and / or boilers and / or el. heaters.

The control unit can control heating up to 4 different tanks / swimming pool that can be heated up to 2 separate hot water solar collector fields and up to 2 types of conventional source (boilers) or el. heater.

Pumps to collector can be operated with PWM or analog signal.

In addition to the temperature sensors, also on the control unit it is possible to connect the flow meter and the pressure switch in the solar system.

With standard tank heating control over temperature difference, control unit has protective functions such as collector cooling (over tank), collector freezing options, tank cooling (over collector or recirculation), legionella protection (disinfection function) and protection of outlets (pumps and valves) of blocking due to long-term non using time.

Also, it is possible to include the functions of examination of the priority tank filling, pumps pulse start, as well as annual holiday option (all protective functions are switched on at once), one-time heating of the tank, one-time extension of tank heating or tank disinfection (legionella protection).

For the functions like heating of the tank with conventional source (boiler) or el. heater, recirculation, impulse start of the solar collector and disinfection of the tank it is possible to set schedual (timers) (two tables, for each day of the week, up to 3 times).

All functions are controlled through a touch screen color screen that simplifies the use of control.

As an additional equipment, a Cm WiFi-box can be connected via which it is possible to connect control unit to the local WiFi network for remote control and monitoring of the system.

TECHNICAL CHARACTERISTICS

Technical characteristics CM-SOL	
Input	10x multifunctional inputs (each of which can be PT1000 or NTC5K or flow meter or pressure switch)
	1x power supply +5V
Output	8x semi-conductor (triac)
	1x potential-free relay with NO and NC
Output power	Triacs (8x) 1A/240V
	Relay (1x) 5A/30VDC/250VAC
Power supply	195-265V/50Hz
Max. Power	6,3A/240VAC
Electricity consumption	3W
Cross section conductor	1-2,5 mm ²
IP protection	IP20 po EN
Environment temperature	-10 do 40°C
Display	touchscreen display
Control unit mass	715 g
Housing material	Flame resistant ABS (UL94V-0)
Control unit dimensions	(WxHxD) 200x40x200
Sensor technical characteristics	
Sensor type	Pt1000, NTc5k
Min. conductor cross section	0,5-2,5 mm ²
Max. conductor length	50 m

CE Declaration of conformity

The product complies with the relevant directives and is labelled with the CE mark. The Declaration of conformity is available at request, please contact the manufacturer.



BASIC PARTS

INPUT:

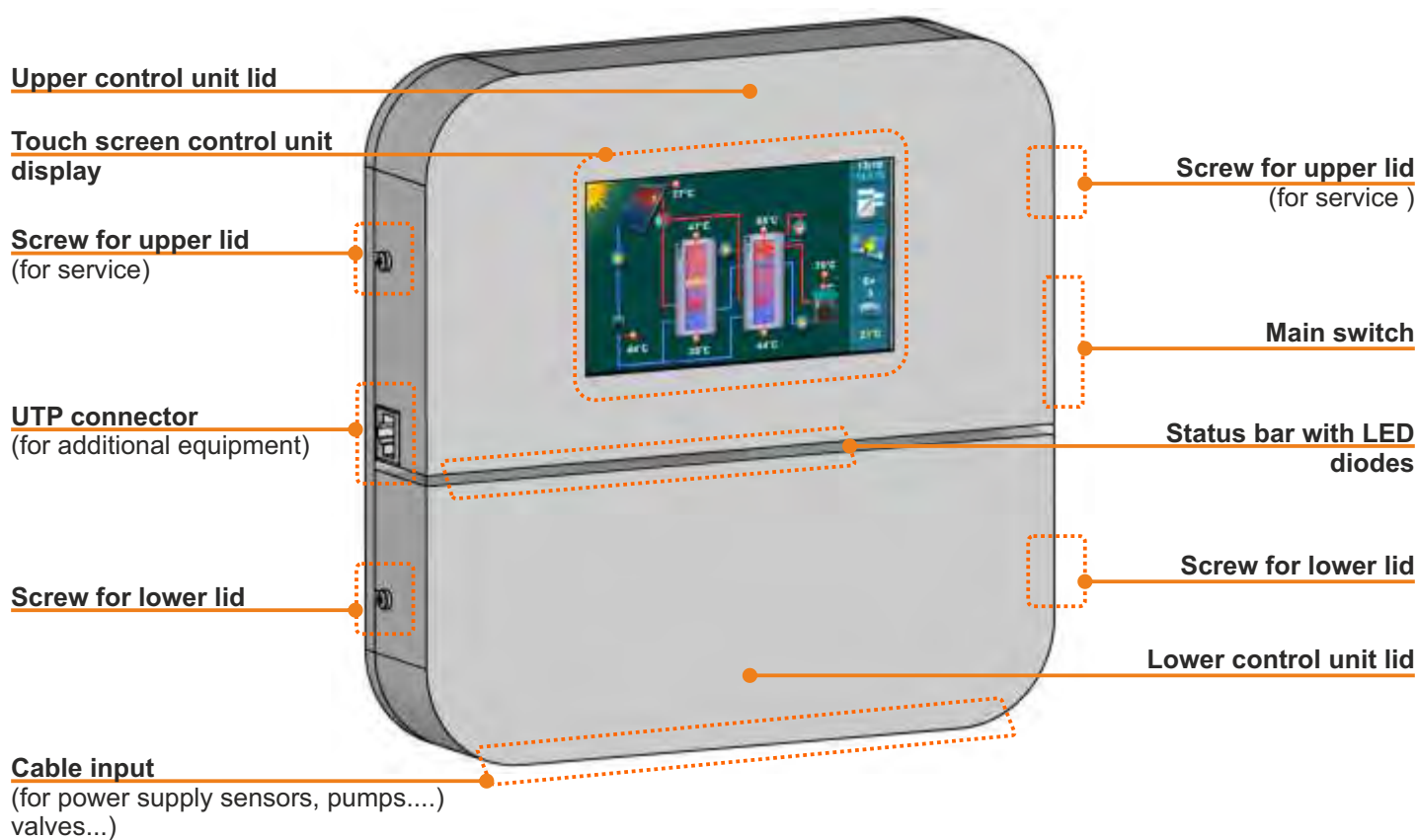
- 10x multifunctional inputs for sensors (PT1000 or NTC5k sensor of the tank, boilers, solar collectors and outdoor sensor, flow meter or pressure switch)
- 1x +5V power supply

OUTPUT:

- 8x standard (230V)
- 2x PWM (for modulation pump)
- 2x 0-10V analog (for modulation pump)
- 1x relay output (with quiet or operational contact)
- 2x CAL (for alarm moduler)
- 1x USB connector for software loading
- 1x UTP connector for connection of the additional equipment (WiFi box...)
- 1x Main switch

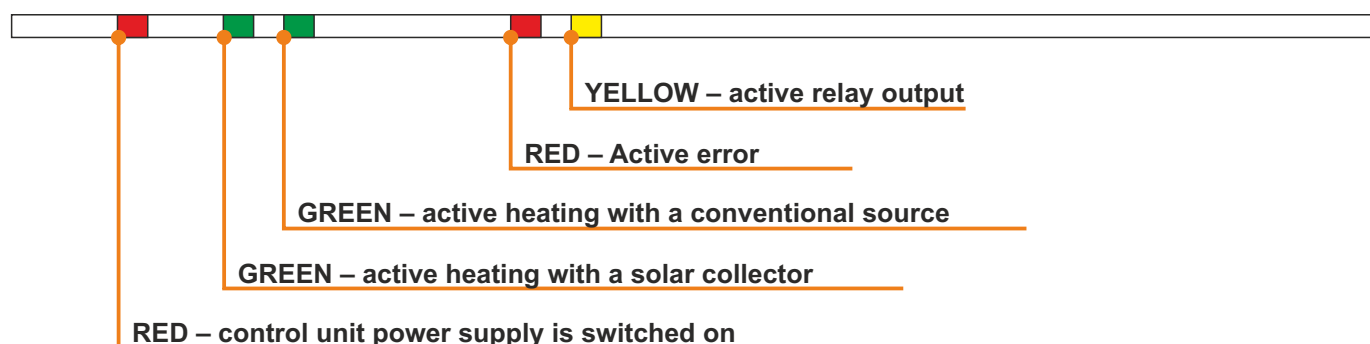
DELIVERY in the cardboard box:

- 1x solar control unit
- 1x Pt1000 (silicone cable for solar collector)
- 4x Pt1000 (2x tank, 1x boiler, 1x return)
- 3x dowel+screw
- 1x technical manual

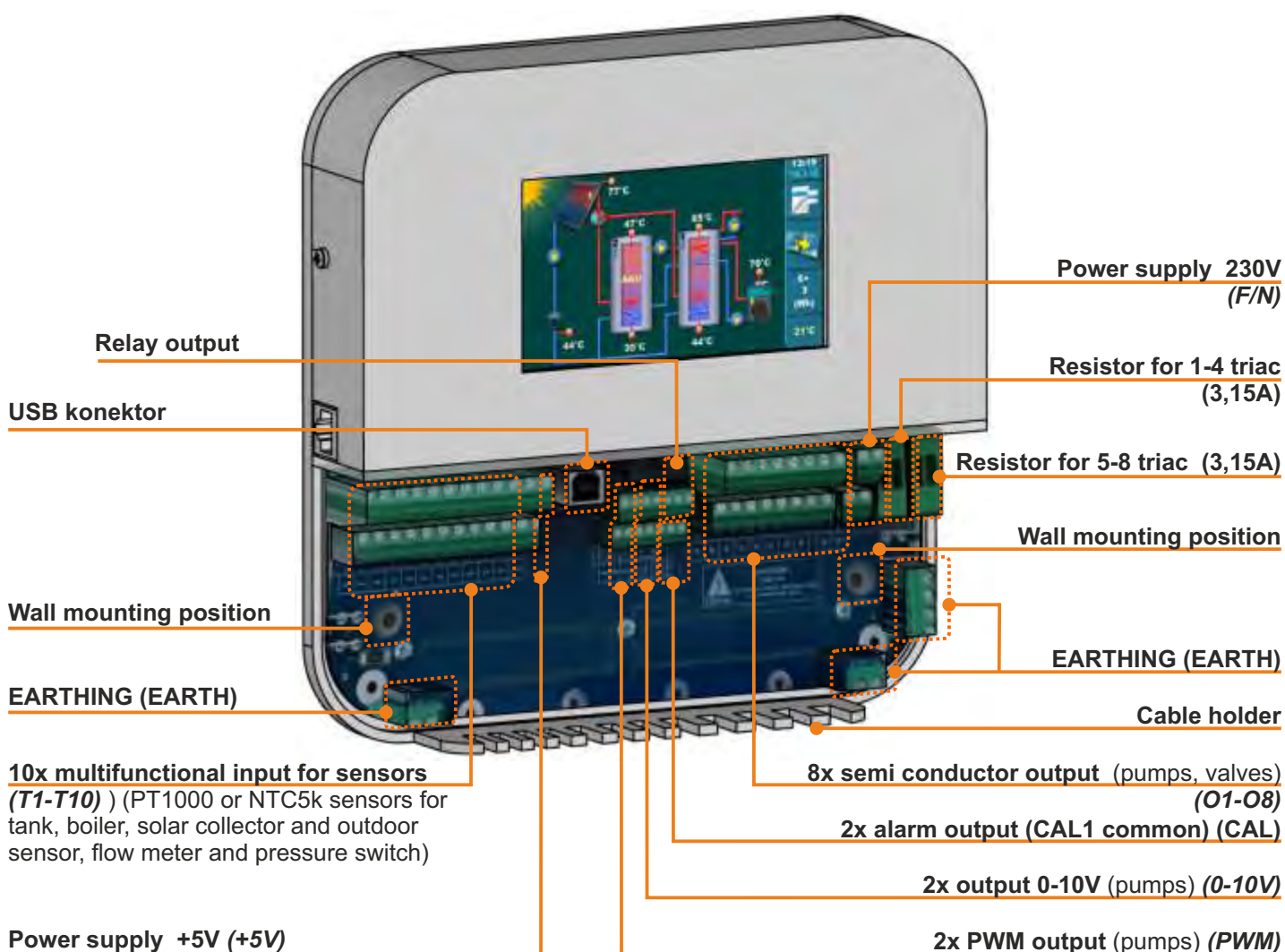


BASIC PARTS

STATUS BAR - LED diodes



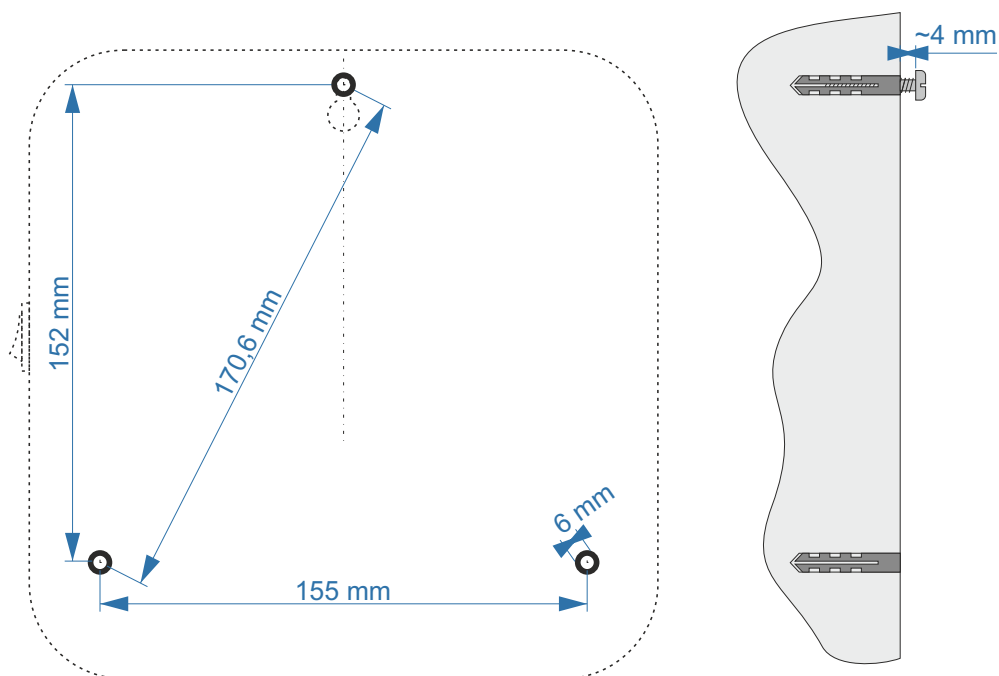
Control unit INPUT / OUTPUT



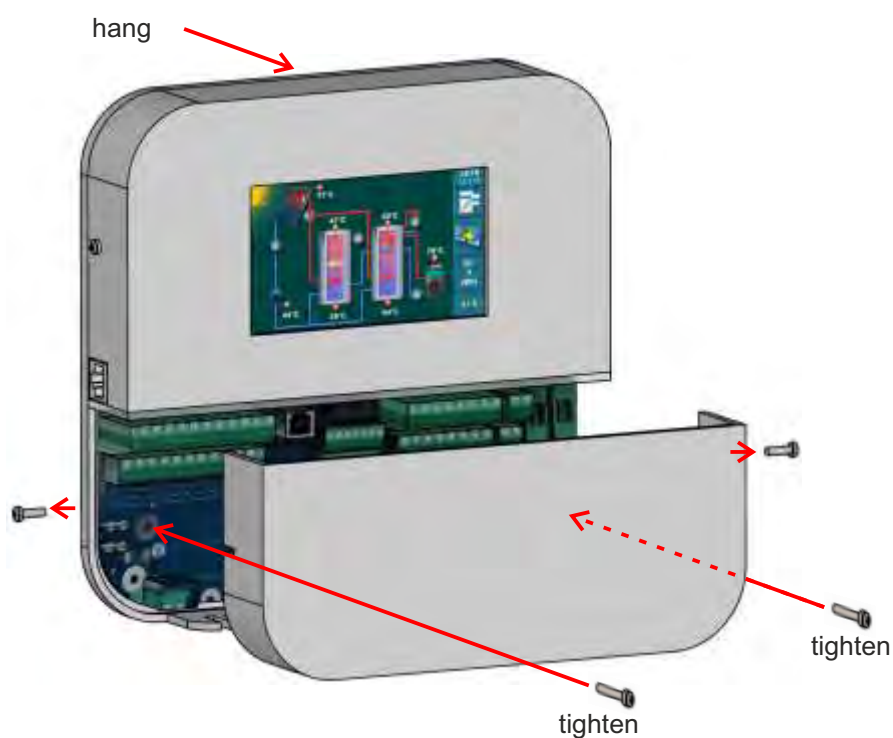
CONTROL UNIT INSTALLATION

Solar controller is installed on a wall or flat hard surface in a closed dry area.

First, 3 holes in diameter 6mm x 35 - 40mm should be drilled at the mounting site according to the bottom sketch. Three dowels are inserted into the holes and in the upper dowel need to be screwed the screw with a distance of approx. 4mm from the wall.



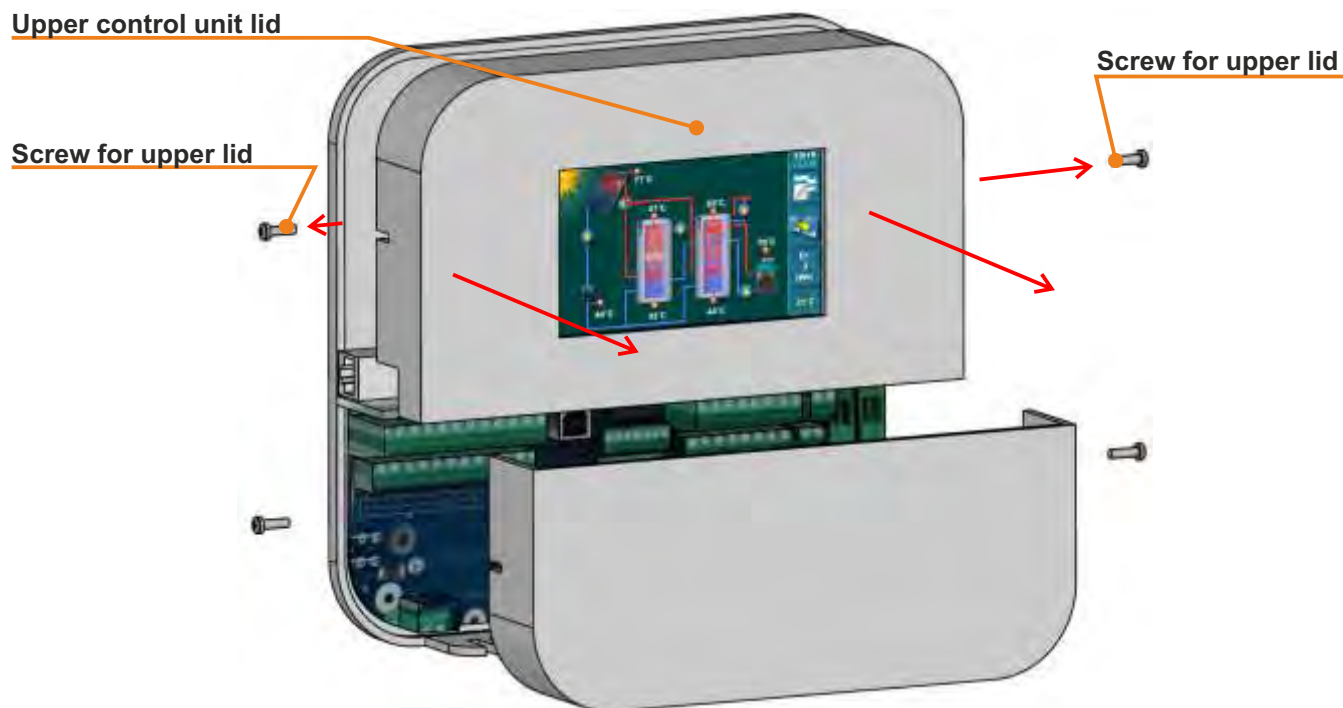
From the control unit remove the lower lid, hang the control unit on the upper screw, insert the screws at the mounting positions of the control unit and tighten the screws in the wall dowels.



BATTERY REPLACEMENT

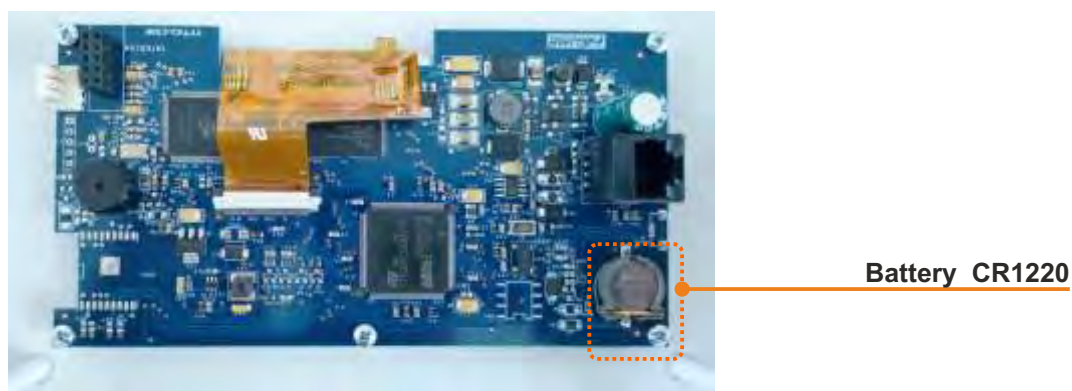
If it is necessary to replace the battery in the solar control unit, remove the upper control unit lid (on which the display is located).

After releasing the two side screws for the upper lid (each side of the control for one), slowly pull the upper lid of the control towards you and completely remove it.



On the back of the display, in the corner of the PCB board, there is placed a battery CR 1220.

After replacing the battery, the upper lid with the display must be carefully restored to the control unit (pay attention to the connector of the PCB board and motherboard) and tighten the side screws.



CONTROL UNIT DESCRIPTION

CmSOL control unit can control solar heating up to 4 separate tanks with 1 or 2 solar collector fields and heating the first tank using conventional sources - an el. heater and up to two boilers.

Control unit has 10 inputs and 8 outputs.

Types of solar collectors can be chosen between flat plate and vacuum tube solar collectors.

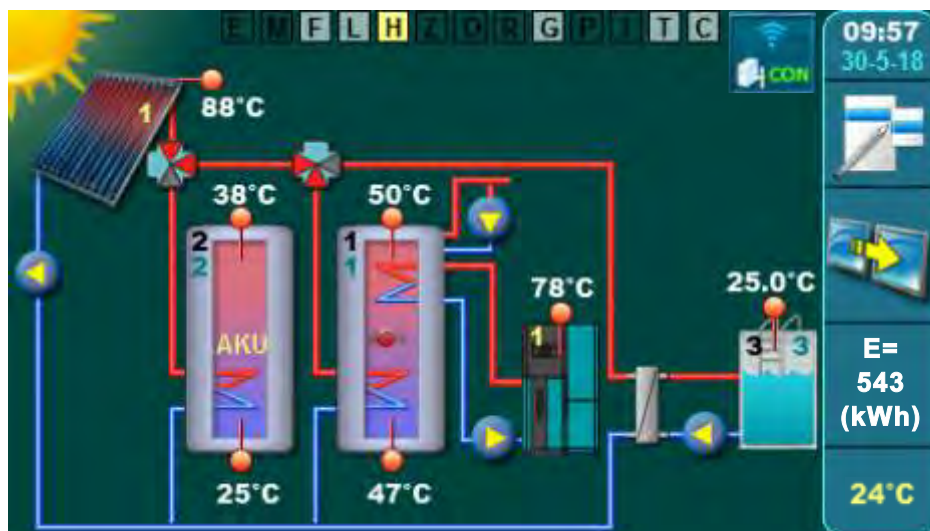
Types of tanks can be selected between DHW tank, accumulation tank, accumulation tank with built-in DHW tank and swimming pool.

Hydraulic connection of the multiple tanks can be selected via pumps, 3-way zone valve and 2-way zone valve. It is possible to control the pump for heating the first tank with the next one (heating the DHW tank with the accumulation tank).

The first tank can be heated by an el. heater (via contactor) and with up to 2 conventional heat sources (it is possible to choose between wood boilers, pellets, oil / gas, el. boiler or heat pumps).

The control unit can control the recirculation pump with impulse operation at the set schedule time.

By entering the correct flow through the solar collectors and by installing the solar collector backflow sensor, solar controller calculate total gain energy from solar collectors. If the flow meter is installed, the calculation of the energy will be more accurate.



In addition to the upper mentioned, the control unit also has protective functions: solar collector cooling function (via tank), tank cooling function (over solar collector or recirculation), disinfection function (legionella protection) and function pump/valve protection function for blocking protection.

On the control unit you can determine the priority of solar heating of a single tank, switch on a tank heating priority test, switch on and off certain tank from the heating, switch on one-time heating with conventional sources, switch on party option for one-time heating extension and switch on the holiday option with which are automatically switch on all protective control unit functions to allow the overheating / freezing of the collector to be minimized.

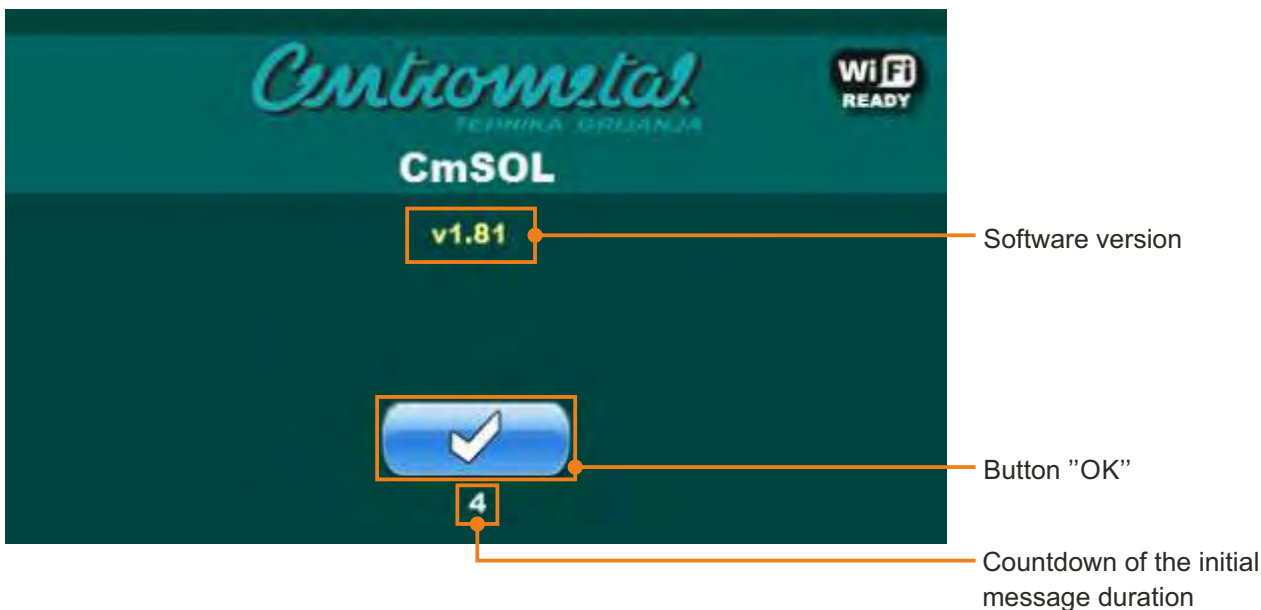
To monitor the operation of the solar system, it is possible to install a WiFi box and through the web portal monitor the individual temperatures and operation of individual pumps and valves. Through the web portal it is also possible to change the set temperatures of the tank and solar collector.

CONTROL UNIT ACTIVATION

After the main switch is switched on, the menu for selecting the desired language and the software version will appear. Different languages can be selected. To select the language you need to press on the display the flag of the preferred language.

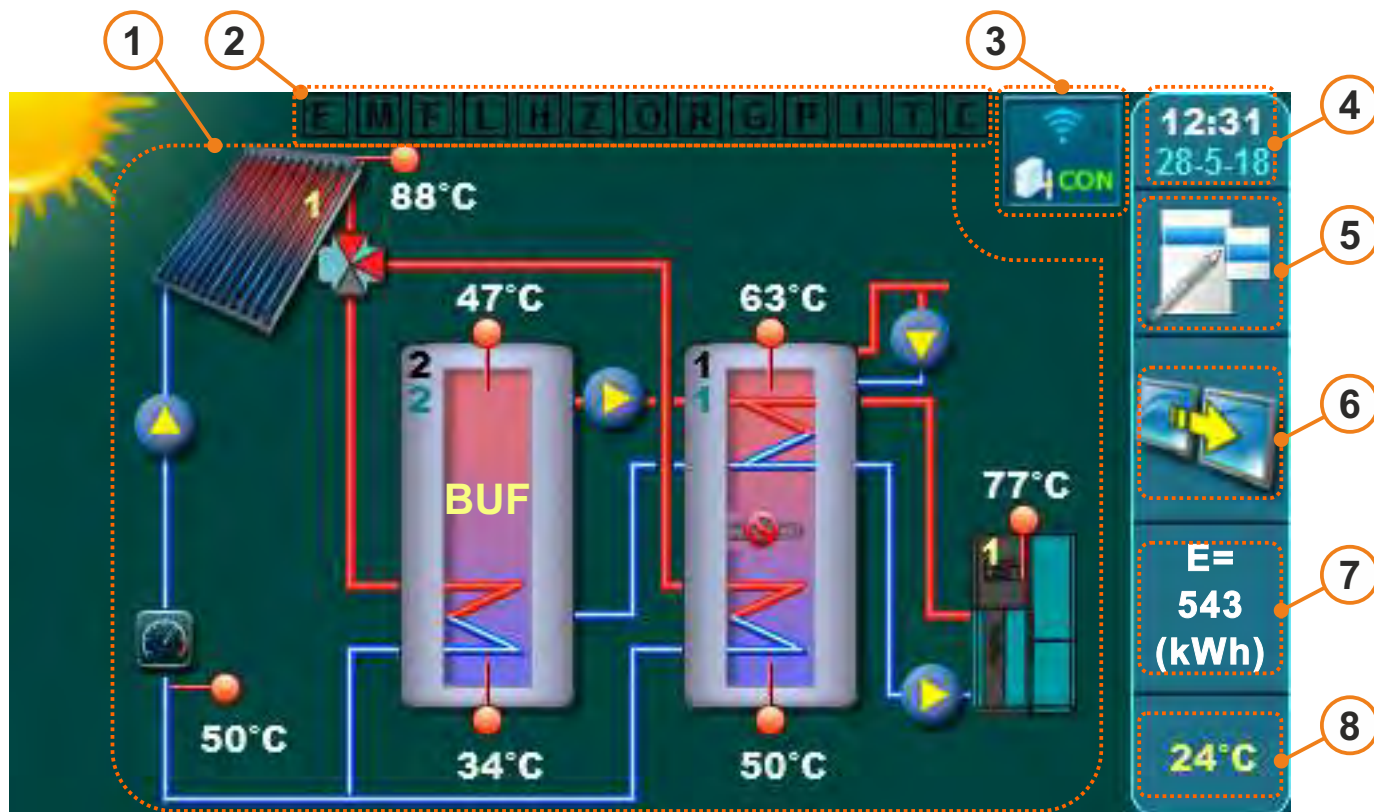


If in the main menu under MENU (DISPLAY), option LANGUAGE SELECTION is set under OFF an initial message will appear (see the image below) and it will be displayed as long as it is set in the menu INITIAL MESSAGE TIME or until the button "OK" is pressed.



When switching on the main switch the display must not be pressed (finger ...). If the display switches on when the main switch is pressed (Firmware update is displayed on the screen), the control unit enters the software loading mode, which can only be used by authorized service persons. If this occurs, switch off the main switch and turn it back on again without any pressure on the display to make the control unit ready for operation.

MAIN DISPLAY / SYMBOLS

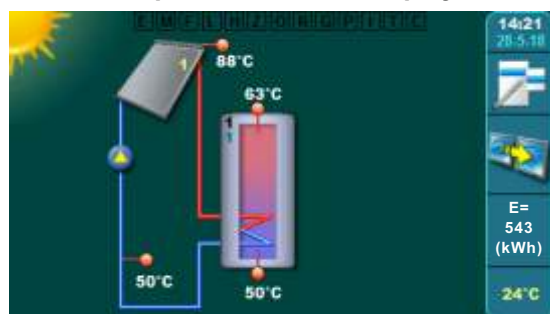


1 coll. field / vacuum tube coll. / 1 tank DHW / 1 ACCU tank / 3 –way zone valve / el. heater / boiler1 / mixing/reheating / flow meter / backflow sensor / outdoor temperature sensor / recirculation / internet control

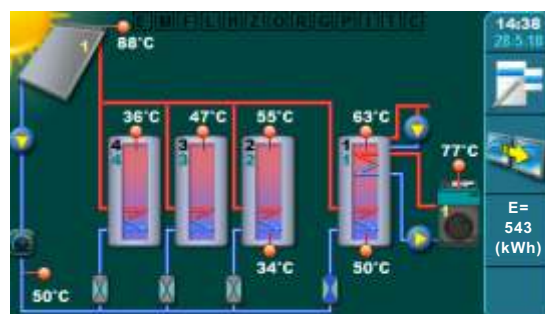
Main display symbols

- 1 - Display of the selected configuration
- 2 - Display of the system functions (switch off/on/active)
- 3 - WiFi Connection Status Display (additional equipment)
- 4 - Display of the current time and date
- 5 - Button 'main menu'
- 6 - Button "shortcuts"
- 7 - Display the total gain of solar energy
- 8 - Display of outdoor temp (additional equipment)

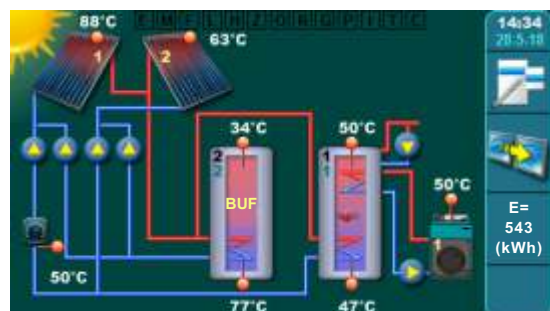
A few examples of the main display with selected configurations of the solar



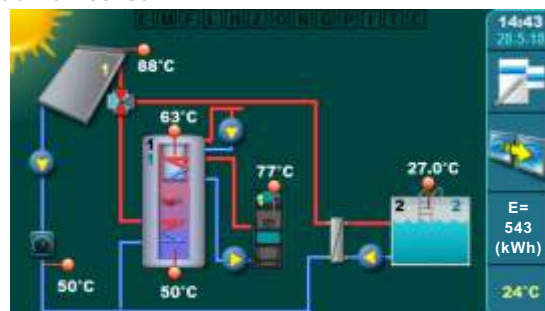
1coll.field / flat plate coll. / 1 tank. DHW / backflow sensor / outdoor temperature sensor



1coll.field / flat plate coll. / 4 tank. DHW / hydr. connection 2 –way zone / reheating boiler oil/gas / recirculation DHW / flow meter / backflow sensor

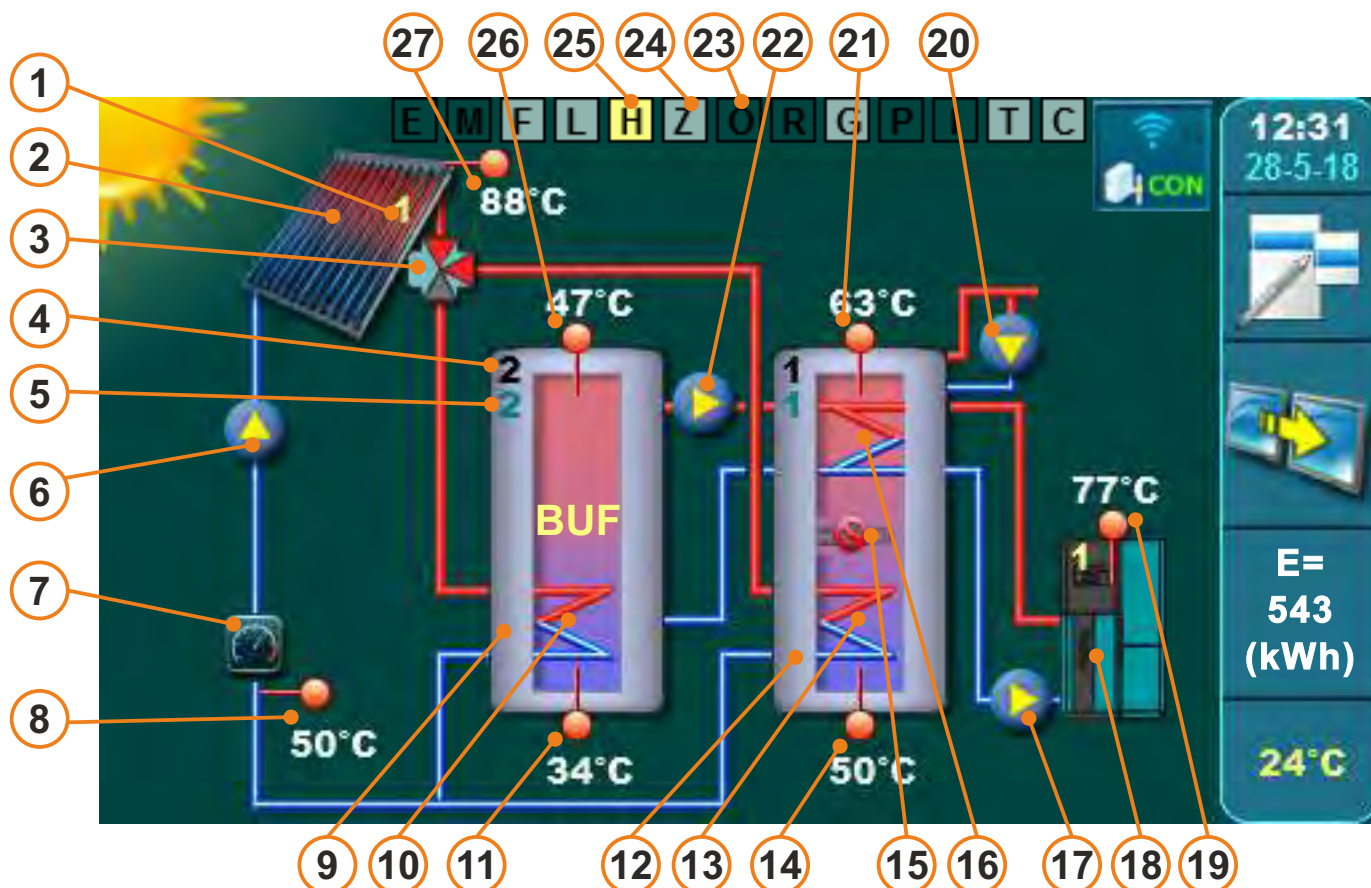


2 coll. fields / vacuum tube coll. / 1 tank. DHW / 1 accu tank / pump hydr. connection / reheating boiler oil/gas / recirculation DHW / flow meter / backflow sensor



1 coll. fields / flat plate coll. / 1 accu with DHW / swimming pool / hydr. connection 3 –way zone / reheating wood boiler / recir. DHW / flow meter / backflow sensor / outdoor temp. sensor

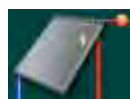
SYMBOLS



Main display symbols

- | | |
|--|--|
| 1 - Mark of the collector field according to the configuration (1(1/2)) | 14 - Lower temp of the DHW tank |
| 2 - Collector field 1 (vacuum tube coll. (vacuum tube/flat plate)) | 15 - El. heater (additional equipment) |
| 3 - Tank hydraulic connection (zone 3-way (pump/ zone 2-way/zone 3-way)) | 16 - Upper heat exchanger of the DHW tank |
| 4 - Mark of the tank according to the configuration (2 (1/2/3/4)) | 17 - Boiler pump |
| 5 - Mark of the tank priority (2 (1/2/3/4)) | 18 - Boiler (Pellets (Pellets/wood/gas-oil/El. boiler/HP)) |
| 6 - Collector pump (collector field 1) | 19 - Boiler temperature |
| 7 - Flow meter (additional equipment) | 20 - Recirculation |
| 8 - Collector backflow sensor | 21 - Upper temperature of the DHW tank |
| 9 - Accu tank (second) | 22 - Mixing pump /reheating of the DHW tank |
| 10 - Lower heat exchanger of the accumulation tank | 23 - System function - inactive (darkgreen) |
| 11 - Lower temperature of the accumulation tank | 24 - System function – switch on, at this moment inactive (lightgreen) |
| 12 - DHW tank (first) | 25 - System function – at this moment active (yellow) |
| 13 - Lower heat exchanger of the DHW tank | 26 - Upper temperature of the accu. tank |
| | 27 - Collectors field 1 temperature |

Solar collectors



1 collector field flat plate solar collector



1 collector field vacuum tube solar collector



2 collector field vacuum tube solar collector

Tanks



Tank DHW
1 Heat exchanger
2 temperatures



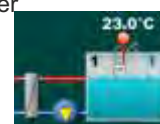
Tank DHW
2 heat exchangers
2 temperatures



Accumulation tank
1 heat exchanger
2 temperature



Accumulation tank with DHW tank
1 heat exchanger
2 temperatures

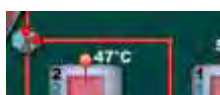


Swimming pool

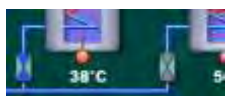
Hydraulic connection of the tank



Hydraulic connection of the tank: Pumps



Hydraulic connection of the tank: 3-way zone valve



Hydraulic connection of the tank: 2-way zone valve



3-way zone valve: Open in L



3-way zone valve: Open in I



2-way zone valve: Open



2-way zone valve: Closed

Mixing / reheating



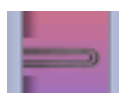
Mixing / reheating
Reheating – Pump between the accumulation tank and DHW tank for reheating of the DHW tank

Mixing / reheating

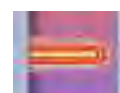
REMARK: El. Heater and boiler/boilers can be configured only to 1. tank in the configuration!



El. heater (in 1. tank) installed – switch off schedule - off



El. heater (in 1. tank) installed – switch on - not working schedule - table 1/2



El. heater (in 1. tank) installed – switch on - working schedule - in table 1/2



Boiler: Pellets/chipped wood



Boiler: wood



Boiler: gas/oil



Boiler: Heat pump



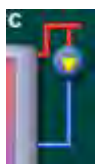
Boiler: El. boiler



Tank reheating:
example 1 wood boiler and 1 oil/gas boiler
- control unit controls only the boiler pumps, do not switch off/on the boilers!

Recirculation

REMARK: Recirculation can be configured only to 1. tank in the configuration!



DHW recirculation

Energy meter / backflow sensor

REMARK: energy meter is the additional equipment



Energy meter (upper symbol)
Backflow meter (lower symbol)

WiFi supervision

REMARK: additional equipment



Cm Wifi-box
Is not connector to a router/server



Cm Wifi-box
Is connector to a router/server

SYMBOLS OF THE SYSTEM FUNCTION



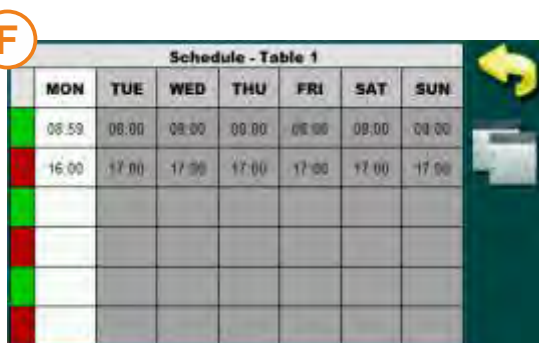
Symbols of the system function on the main display

- C** - Cooling of the collector (2.2.Collector cooling)
- T** - Cooling of the tank (1.7.Tank cooling)
- I** - Pulse start of the collector/swimming pool pump (2.1.2.Pump pulse start)
- P** - Priority test (1.6.priority test)
- G** - Protection of the pumps/valves (3.8. Protection of the pumps/valves)
- R** - Recirculation (3.6.Recirculation)
- O** - One-time heating of the DHW (3.2.DHW one-time)
- Z** - Party function (3.4.Party function)
- H** - Holiday option (3.5.GO options)
- L** - Tank disinfection (3.7.Legionella protection)
- F** - Collector frost protection (2.3.frost protection)
- M** - Manual test (3.9.Manual test)
- E** - Reheating delay (3.3.Reheating delay)



- 1** - When none of the functions are included, the letter boxes on the main display are dark green.
- 2** - When a single function of the system is on, but not active, the letter box of that function on the main display is light green.
- 3** - When a single function of the system is on, and active, the letter box of that function on the main display is yellow.

PARAMETER SETTING



There are several parameter menus for setting parameters:

A- the menu is used to set parameters that have numeric values (°C, time...)

example: setting of the DHW tank temperature

B - the menu is used to set the parameters which need to be selected (marked) to be switched on, multiple elements can be tagged simultaneously

REMARK: some of the included elements exclude others (may not be included at the same time)

example: switch on the tank...

C - the menu is used to set the parameters which need to be selected (marked) but only one parameter can be selected (marked) example: test priority switched off...

D - the menu is used for settings the parameters which have more then one setting parameters (adjusting with the arrows) example: setting of the time and date

E - the menu is used when entering file names, usernames and passwords (letters and characters)

example: entering the name of the user file during the recording...

F - the menu is used when setting the schedule (timers)

example: setting the schedule of the pulse pump start

TYPES OF PARAMETERS SETTING (EXAMPLES)



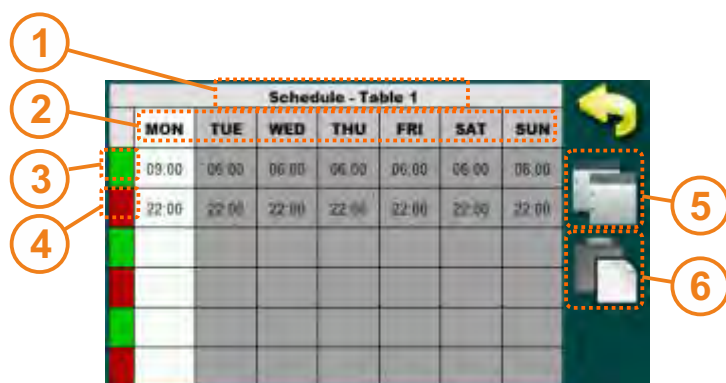
- 1 - setting parameters
- 2 - the window of the value you set
- 3 - set value
- 4 - value unit
- 5 - the confirmation button
- 6 - resets the current value to the factory set value
- 7 - button info (shows the factory, min. and max. value)



- 1 - setting parameters
- 2 - the window of the value you set
- 3 - set value (only one can be set)
- 4 - confirmation button
- 5 - information on the factory value
- 6 - BACK button to return to the previous screen



- 1 - setting parameters
- 2 - elements that can be switched on / off
- 3 - marked (switched on) element
- 4 - confirmation button
- 5 - unmarked (switch off) element

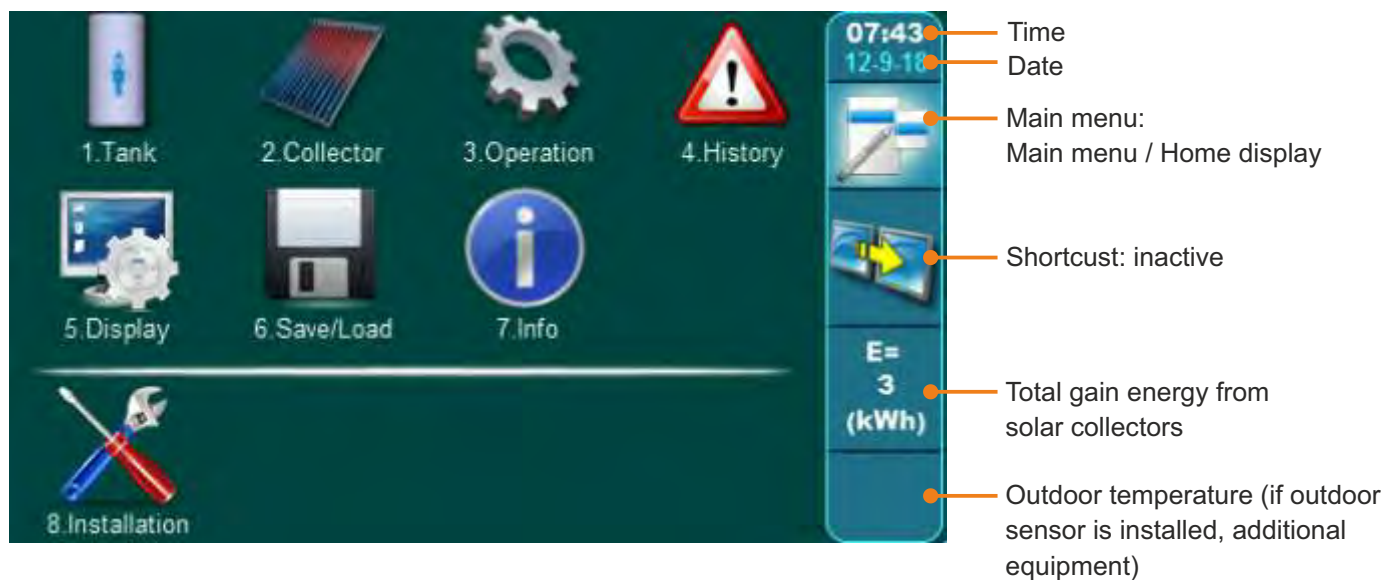


- 1 - setting table
- 2 - the day of the week for which the schedule is valid
- 3 - start time of switching time (green)
- 4 - end of switching time (red)
- 5 - if it is marked all day by pressing the name at the day, it is possible to copy all the switching times of that day.
- 6 - marking the name of the day can be pasted before copied day

IMPORTANT: After changing parameter values press the **"CONFIRMATION"** button to save a new value. If you do not want to save a new value, press the button **"BACK"**.

MAIN MENU

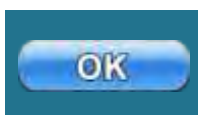
The main menu is used to select the desired menus. To select a particular menu, press the appropriate icon on the display. To switch between "Main Menu" and "Home screen", use the "MAIN MENU" button.



BUTTONS



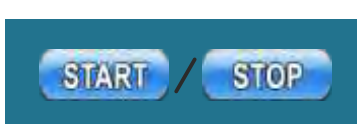
Button "**MAIN MENU**"
options: main menu / home display



Key "**OK**"



Button "**SHORTCUTS**"
options: home screen / set shortcuts



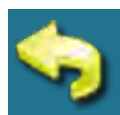
Key "**START**"/"**STOP**"



Button "**CONFIRMATION**"



Navigation Keys:
"**LIJEVO**", "**DESNO**", "**DOLJE**", "**GORE**"



Key "**BACK**"



Key "**BRISANJE**"



Key "**BACK SCREEN**"



Key "**TVORNIČKE POSTAVKE**"



Key "**NEXT SCREEN**"



Key "**INFORMACIJE**"



Key "**COPIE**"



Key "**ZALIJEPI**"



THE NUMBERS OF MENU AND MENUS ARE CHANGING ACCORDING TO THE SELECTED CONFIGURATION (here are shown only fix numbers (which are always the same), and other changeable numbers are marked with x, menu depth where the parameter is located).

USER MENU (MAIN MENU)

1. TANK



example: configuration 2 tanks,
function mixing-heating



The menu 1. Tank contains menus associated with configured tanks. Depending on the configuration, here are displayed menus for 1 to max 4 tanks.

1.x DHW temperature

Setting of desired DHW (domestic hot water) temperature. Conventional energy sources (el. heater, boiler1 and boiler2) heat the DHW tank to the desired DHW temperature.

NOTE: DHW temperature applies only to the conventional sources. Solar collectors heat tank up to tank temperature TMAX tank.

Factory settings		min./max.	unit
DHW temperature	55	10 / 85	°C

1.x. T MAX tank 1

Setting maximum tank temperature 1. Solar collectors heat tank 1 to temp. [T MAX tank 1] after which the heating of the tank 1 stops and the heat is transferred to the next tank by priority (if available). If the collector cooling function is activated, the temperature in the tank can increase to max. 90 °C (or 95°C if the TMAX Tank 1 is set at 90°C).

1.x. T MAX tank 2

Set maximum tank temperature 2. Solar Collectors Heat Tank 2 to Temp. [T MAX Tank 2] after which the the heating of the tank 2 stops and the heat transfer to the next container by priority (if available). If the active cooling function of the collector is also activated, the temperature in the tank can increase to max. 90°C (or 95°C if the TMAX tank is set to 90 °C).

Factory settings		min./max.	unit
T MAX tank 1	70	30 / 90	°C
T MAX tank 2	70	30 / 90	°C
T MAX tank3	70	30 / 90	°C
T MAX tank 4	70	30 / 90	°C

If the last tank in configuration is swimming pool, the max. swimming pool temperature can be adjusted in the following range:

Factory settings		min./max.	unit
T MAX tank X	28	15 / 40	°C



Example:configuration 2 tanks

1.x. Enabled tanks

In this menu, you can switch on/off the individual tank in operation of the system.

SWITCH ON - the tank is included in the system.

SWITCH OFF - the tank is switched off from the system (no pump or valve is used, nor does it heat up).

NOTE: If all tanks are switched off on the control unit, a warning will appear! (solar collectors do not fill any of the tank fast boiling in the collector).

Factory settings		selection
Tank 1	Switch on	ON/OFF
Tank 2	Switch on	ON/OFF
Tank 3	Switch on	ON/OFF
Tank 4	Switch on	ON/OFF



Example:configuration 3 tanks

1.x. Tank priority

Selection of the priority for solar tank filling. Tank 1 must always be the first priority, the other tanks can rotate at the priority of the charge. The priority of each tank is indicated in the upper left corner of the tank (green number), below the row number of the tank (black number).

Factory settings		selection
2 tank	12	12
3 tank	123	123 / 132
4 tank	1234	1234/1243/1324/1342/1423/1432

**1.x. Priority test**

If there are more than one tank in the configuration, the tank priority test may be switch on to periodically examine whether the collector temperature is high enough to refill the priority tank.

After the priority tank is filled (or [T MAX tank1] or [Tcoll < Ttank1 + TDcoll-ready] solar heating is switched to the next tank by priority. By switching to the Priority Option, the next priority tank by priority will be filled for a certain time (set under Priority filling) and then tank filling will be stopped for a specified time (set under Priority Stand by) to make sure the collectors can begin filling the priority tank or continue filling the same tank. If the increase in temp. of the collector in the set idle time is greater than or equal to [3°C / min.] the idle time is extended as long as the temperature rises, ie when the priority tank can be refilled. If the increase in temp. the collector in the set idle time is less than [3°C / min], continues filling the same tank. By using the Test Priority option in the 1. Tank, appears the menus Filling priority and Stand by priority.



Factory settings		selection
Test priority	OFF	OFF/ON

1.7. Filling priority

Priority test -> Switch on

Continuous filling time of the next tank in order (non-priority tank).

Factory settings		min./max.	unit.
Filling priority	15	0 / 720	min

1.x. STAND BY PRIORITY

Test priority -> Switch on

The collector pump stand by time during which the temperature rise of the collector is tested in order to return collector heating to the priority tank. If the temperature increase in the set stand by time is greater than or equal to $[3^{\circ}\text{C} / \text{x min}]$, the stand by time is extended for the next interval, which again looks at the increase in the temperature of the collector and the possibility of filling the priority tank. If the temperature rise in the set stand by time is less than $[3^{\circ}\text{C} / \text{x min}]$, filling the current tank continues

Factory settings		min./max.	unit
Stand by priority	3	0 / 60	min

**1.x. Tank cooling**

Cooling the tank, ie lowering the water temperature in tanks to prepare the tank for accepting the new solar energy the next day, can be done over the collector or through recirculation (if it is installed in the system and connected to the controller).

NOTE: Cooling of the tank always start from the lowest priority to the tank with the highest priority. Tanks must have upper tank sensor.

Collectors - Cooling the tank via the collector (and pipes to the collector).

NOTE: It is recommended to cool the tank with **flat plate collectors** (not vacuum tube) because of less insulation on flat plate collectors.

TIP: If you want to cool the tanks to leave more space for solar energy for the next day, it is recommended to enable the Tank Cooling function together with Collector Cooling function and lower the [TMAX tank] down (ca. 50°C). When the tanks are filled up to [TMAX tank] the collectors will reach the cooling point faster (adjust according to the number of collectors, not to pass TMAX coll), the temperature in the tanks will start to rise up to 90°C , but after that will start tank cooling which will try to cool tanks down to $[\text{TMAX tank} - \text{dTcoll/tank}]$ (ca. $50-4=46^{\circ}\text{C}$).

Cooling takes place when the temperature in the collectors is lower than the temperature in the tank down $[\text{Tcoll.} + \text{dTcoll.} / \text{tank.} < \text{T MAX tank.X}]$. The tank cools only when all the tanks are filled to the [T MAX tank] and starts from the minimum priority tank.

Cooling of the tank stops when the temperature of the upper sensor drops below the difference collector / tank $[\text{Ttank_upper} < \text{TMAX tank} - \text{dTcoll} / \text{tank}]$.

Recirculation - cooling the first tank through recirculation (only the first priority tank is cooled, only if the recirculation is connected). Cooling of the tank starts only when all the tanks are filled to [T MAX] and when $[\text{Ttank.1_upper} > \text{T MAX is tank.1}]$ (only runs on the first tank). Cooling of the tank stops when the temperature of the upper sensor drops below the difference collector / tank $[\text{Ttank_upper} < \text{TMAX tank} - \text{dTcoll} / \text{tank}]$.

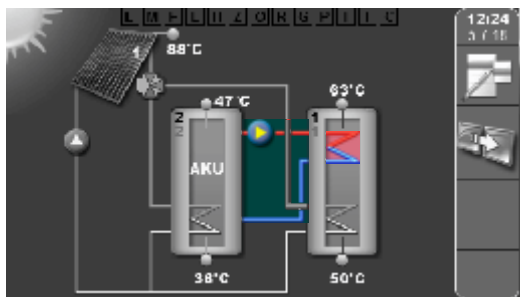
Call-Rec - Simultaneously cooling of tanks through collectors and recirculations.

Factory settings		
Tank cooling.	OFF	Off/Collectors/Recirculation/Call-Rec

1.X. Mixing-reheating

If in the mixing-heating of the tank is switch on the mixing-reheating pump can be switched on or off. If the function is switched on, when the temperature of the first tank (upper sensor) is lower for the differential setting than the second tank (upper sensor), the mixing / reheating pump is switched on to heat the first tank (this function is usually used when the first tank is DHW tank and the second ACCU, when the excess energy is stored in the ACCU during the day, and in the evening, after the consumption, the DHW tank may additionally be heated).

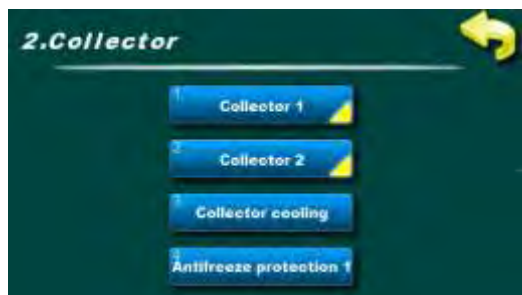
NOTE: need to be switch on in the Installation menu.



example: configuration 2 tanks,
hyd. connection:
- Zones 3-Way, Mixing / Reheating

Factory settings		selection
Mixing-reheating.	OFF	ON/OFF

2. COLLECTOR



example: configured 2 collector fields



2.1. Collector 1

Menu 2.1, Collector 1 contains menus for setting the parameters for the 1st Collector field.

2.1.1. T MAX COLLECTOR1

Setting of maximum collector temperature 1. The solar collector field 1 pump runs to the temperature in the collectors [T MAX collector 1] after which it goes off (to protect the armature from excessive temperature due to steam in the collectors and the inability to operate the pump until the temperature in the collectors drops below the set max. collector). When the temperature in the collectors drops below [T MAX Collector1 - 4°C], the Collector Field 1 pump again starts working if other conditions are met.

NOTE: [T MAX collector] it is necessary to adjust to the point of solar fluid boiling in the solar system and always be lower than the boiling point.

Factory settings		min./max.	unit
T MAX collector 1	140	30 / 150	°C



2.1.2. Pulse collector start

In the menu 2.1.2. Pulse collector start contains the menus for adjusting the parameters for the pulse start pump (kick) of the collector field 1.

If the collector sensor is not mounted in the collector (but it is set somewhere on the flow pipe) or has more than one collector in the same field, it is recommended to switch on the impulse collector start which, if the pump collector pauses, occasionally starts collector pump at a specified time to obtain a more accurate current temperature solar fluid on the collector sensor.

NOTE: excessive and long-lasting pump operation can be tank unnecessarily cooled down the tank. Pump working time and stop depends on the size and location of the collector field and the collector sensor.



2.1.2.1. Pulse collector start

In this menu, the pulse start function can be on or off. All pre-set times as well as switching times remains.

Factory settings		selection
Pulse coll. start	OFF	ON/OFF.

2.1.2.2. Pump work time

Setting of the working time of the pump at pulse start.

NOTE: Time has to be adapted to the size and location of the collector field and collector sensor to obtain the correct collector temperature.

Factory settings		min./max.	unit
Operation pump time	10	0 / 3600	sec

2.1.2.3. Pump pause time

Setting of the pause time of the pump in the pulse start.

NOTE: Time has to be adapted to the size and location of the collector field and collector sensor to obtain the correct collector temperature.

Factory settings		min./max.	unit
Pump pause time	15	0 / 1440	min

**2.1.2.4. Schedule**

In this menu there are menus related to adjusting the schedule for the pulse start of the pump (kick) of the collector field 1.

The schedule can be switched off or one of two tables can be set with the set intervals of the active and inactive function

2.1.2.4.1. Schedule

In this menu, you can switch on / off the schedule and select one of the two tables that will operate on the pulse start pumps.

NOTE: If the pulse collector start is switched on, and the switch-off time is off, the pulse start will run non-stop (24/7) at start / stop times. In such a case, the pulse start **will also work overnight** and there is a possibility of cooling the tank over the collector.

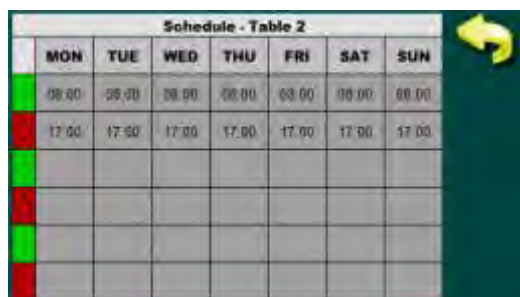
Factory settings		selection
Switching time	Table1	OFF/Table1/Table2

Schedule - Table 1							
	MON	TUE	WED	THU	FRI	SAT	SUN
Start	08:00	08:00	08:00	08:00	08:00	08:00	08:00
Stop	17:00	17:00	17:00	17:00	17:00	17:00	17:00
Active							
Inactive							

2.1.2.4.2. Table 1

In this menu, you can set 3 time intervals (3 start and 3 stop) for each day of the week in which the pump will operate according to the set pulse start. Factory setting: Pulse start pump is active from 08:00 to 17:00 every day of the week. From 17:00 h the first day until 08:00 h the next day the pulse start does not operate.

Factory settings		selection
Table 1	08:00-17:00	mon/tue/wed/thu/fri/sat/sun



	MON	TUE	WED	THU	FRI	SAT	SUN
08:00	08:00	08:00	08:00	08:00	08:00	08:00	08:00
17:00	17:00	17:00	17:00	17:00	17:00	17:00	17:00

2.1.2.4.3. Table 2

In this menu, you can set 3 time intervals (3 start and 3 stop) for each day of the week in which the pump will operate according to the set pulse start. Factory setting: Pulse start pump is active from 08:00 to 17:00 every day of the week. From 17.00 h the first day until 08.00 h next day pulse start is not operational.

Factory settings	selection
Table 2	08:00-17:00 mon/tue/wed/thu/fri/sat/sun

2.x. Collector 2

In Menu 2.2, Collector 2 contains menus for setting parameters for the 2nd Collector field. The menus are identical to that of Collector 1 (for details, see descriptions for 2.1. Collector 1).



2.x. Collector cooling

In this menu, the collector cooling function (over the tank) can be switched on or off (tanks must have upper sensor). With this function we want to delay boiling of the solar fluid in collectors, by raising the temperature in the tanks to the maximum temperature [T MAX tank= 90°C].

The collector cooling function starts if the temperature in the collectors reaches [T MAX collector - dTCooling_collector] and if all tanks are full, to [T MAX tank(set)].

[Tcoll. > T MAX coll. - dTCooling_collector.] Collector cooling stops if the coil collector crosses [T MAX collector] or when the temperature drops in the collectors below [Tcoll < T MAX ch. - dTCooling_collector. - 2°C]

or when all tanks are filled up to the maximum of [T MAX Tank = 90°C]. If [T MAX Tank = 90°C] is selected, then the maximum temperature in the tank automatically rises to 95°C. The cooling differential [dTh.Cooling-collector.] can be adjusted under PIN code.

NOTE: [T MAX collector] must be adjusted to the point of boiling of solar fluid in the solar system and must always be lower than the boiling point.

Factory settings	selection
Collector cooling	OFF ON/OFF



2.x. Frost protection

In this menu, you can switch the collector freezing function on or off. Use this function when in the solar water system is water (instead of solar fluid) and if the outer temperatures do not drop below zero. In the solar system it is always recommended to use a mixture of glycol and water (solar antifreeze with water). The frost collector protection function causes the circulation of water through the collectors to prevent the freezing with help of heat energy from the tank. The frost protection drops when the temperature in the collectors falls to the set temperature under PIN code (factory setting + 4°C). The frost protection starts when the temperature in the collectors rises by + 2°C of the set temperature [Tstart] and when the temperature in the tank lower drops down to + 3°C (to prevent freezing of the tank). Frost protection starts from the least priority tank to a tank of higher priority.

NOTE: Only use this function when only water is in the collectors. It is never recommended to fill the solar system with water only (without glycol)! By switching on the frost protection function, it is possible to coll the tanks. Possible significant energy consumption of conventional sources in heating tank due to "heating" the collector!

Factory settings	selection
Frost protection	OFF ON/OFF

3. OPERATION



In the menu 3. Operation you can find the menus connected with the solar system functions, manual test, and if present, the internet supervision.



Example: configuration of 1 electric heater and 1 conventional source

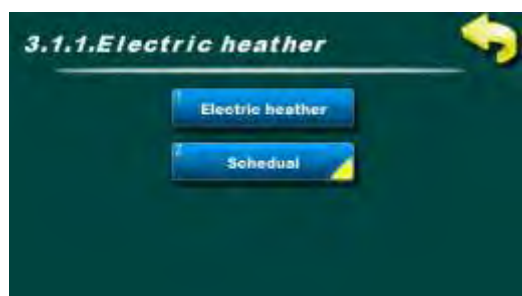
3.1. DHW heating

In this menu you can find the menus connected with the parameter setting of the configured DHW heating (tank).

Under the PIN for the DHW heating it is possible to configure one electric heater and maximum 2 conventional sources (under PIN it is possible to select for screen display following:

wood boiler, pellet boiler, oil/gas boiler, heat pump and electric boiler).

It is possible to switch on/off (needs to be configured in the installation menu) the reheating delay.



3.x.x. Electric heater

In this menu you can find the menus connected with the electric heater parameter settings in the first tank.

NOTE: needs to be switched on in the installation menu. The electric heater is connected on the controller's exit **always through a contactor**. For electric heater work OBLIGATORY define switch ON schedule.

3.x.x.1.Electric heater

In this menu it is possible to switch on/off the electric heater operation for the reheating of the tank.

In case the electric heater is switched off, schedule off, the symbol of the electric heater in the tank is crossed.

In case the electric heater is switched on, schedule table 1/2 and not active, the symbol of the electric heater has a grey colour.

In case the electric heater is switched on, in schedule table 1/2 and active, the symbol of the electric heater in the tank has a red colour and blinks.



Factory settings		selection
Electric heater	OFF	ON/OFF



3.x.x.2 Schedule

In this menu you can find the menus connected with the schedule (switching time) for the electric heater operation.

The schedule can be switched off or one of two tables can be selected with the set time intervals of the active and inactive function.

NOTE: Considering that the electric heater for the tank reheating consumes an expensive energy – electricity – it is necessary after the electric heater switches on, to define the schedule, with which we define the time of the desired tank reheating by the electric heater.

3.x.x.2.1.Schedule

In this menu it is possible to switch on/off the switching time and to select one of two tables according to which the electric heater will be switched on and active when needed (for example, first table can be used for the everyday use of the electric heater, the other over holidays).

NOTE: If the electric heater is switched on and the Schedule (switching time) turned off, the electric heater **will NOT operate**. For the electric heater operation it is obligatory to select one of the two tables and set the switching time (in some countries night/second electricity tariff is much cheaper than the daily one).

Factory settings		selection
Schedule	OFF	OFF/ Table 1/ Table 2

Schedule - Table 1							
	MON	TUE	WED	THU	FRI	SAT	SUN
06:00	06:00	06:00	06:00	06:00	06:00	06:00	06:00
22:00	22:00	22:00	22:00	22:00	22:00	22:00	22:00
06:00							
22:00							
06:00							
22:00							
06:00							
22:00							

3.x.x.2.2.Table 1

In this menu it is possible to set 3 time intervals (3 start (green field) and 3 stop (red field)) for each day in the week in which the reheating by the electric heater will be able to operate according to the set temperatures. Factory setting: the conventional source is enabled from 06:00 until 22:00 each day in the week.

From 22:00 first day until 06:00 next day the reheating by the conventional source cannot operate.

Factory settings		selection
Table 1	06:00-22:00	mon/tue/wed/thu/fri/sat/sun

3.x.x.2.3.Table 2

In this menu it is possible to set 3 time intervals (3 start (green field) i 3 stop (red field)) for each day in the week in which the electric heater will be able to operate according to the set temperatures.

Factory setting: the electric heater is enabled for operation from 06.00 to 22.00 hours each day in the week. From 22.00 hours first day until 06.00 hours next day the electric heater cannot operate.

Factory settings		selection
Table	06:00-22:00	mon/tue/wed/thu/fri/sat/sun



3.x.x. Boiler 1

In this menu you can find the menus connected with the parameter settings for the reheating by a conventional source 1 of the first tank.

NOTE: it is necessary to switch it on in the installation menu.

3.x.x.1. Boiler 1

In this menu the reheating of the conventional source 1 can be switched on or off (ie the operation of the pump between the conventional source 1 and tank 1).

Factory settings	selection	
Boiler 1	OFF	ON/OFF



3.x.x.2.Schedule

In this menu you can find the menus connected for the schedule setting for the reheating operation through the conventional source 1.

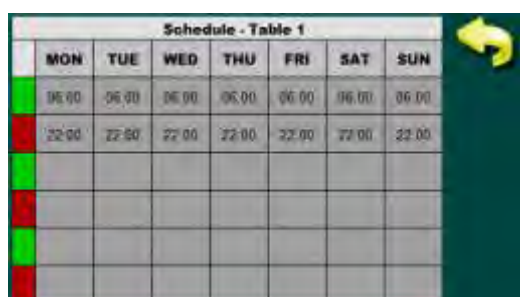
NOTE: In case the schedule is not switched on when we would like the reheating by help of the conventional source to operate and when not, the conventional source pump will operate according to the set temperatures the entire time, 24/7. The recommendation is to switch on and set the schedule in order to optimize the energy consumption according to the real needs for hot water.

3.x.x.2.1.Schedule

In this menu it is possible to switch on/ off the schedule and to select one or two tables according to which the tank reheating by the conventional source 1 will operate.

NOTE: If the conventional source is switched on, and the schedule is switched off, the reheating of the tank by the conventional source will be done according to the set temperature the entire time, 24/7.

Factory settings	selection	
Schedule	OFF	OFF/Table1/Table2



3.x.x.2.2.Table 1

In this menu it is possible to set 3 time intervals (3 start (green field) and 3 stop (red field)) for each day in the week in which the reheating by the conventional source will be able to operate according to the set temperatures. Factory setting: the conventional source is enabled from 06:00 until 22:00 each day in the week.

From 22:00 first day until 06:00 next day the reheating by the conventional source cannot operate.

Factory settings	selection	
Table1	06:00-22:00	mon/tue/wed/thu/fri/sat/sun

3.x.x.2.3.Table 2

In this menu it is possible to set 3 time intervals (3 start (green field) and 3 stop (red field)) for each day in the week in which the reheating by the conventional source will be able to operate according to the set temperatures. Factory setting: the conventional source is enabled from 06:00 to 22:00 hours each day in the week.

From 22:00 first day until 06:00 next day the reheating by the conventional source cannot operate.

Factory settings	selection	
Table 1	06:00-22:00	mon/tue/wed/thu/fri/sat/sun

3.x.x. Boiler 2

The menus for the setting of the conventional source 2. All menus are the same as for the conventional source 1 and will not be separately described.



3.1.3. Heating delay

For the appearance of this menu the reheating with at least one of the conventional sources must be defined and in the installation menu the heating delay must be switched on and configured.

If the function is switched on and the solar collector pump is active (it means that the tank is reheated by solar energy) this function decreases the actuation temperature of the reheating by the conventional source (it delays the start of the reheating by the conventional source) for the value set under PIN in the menu Temperature decrease.

If the solar collector pump is active, the delay of the reheating start:
 $[T_{\text{tank_up1}} \leq T_{\text{DHW}} - dT_{\text{boiler_tank}} - T_{\text{temp. decrease}}]$

If the solar collector pump is not active and needs to reheat the tank, the delay of the reheating is not taken into consideration:
 $[T_{\text{tank_up1}} \leq T_{\text{DHW}} - dT_{\text{boiler_tank}}]$

NOTE: It is needed to switch it on in the installation menu.

Factory settings		selection
Heating delay	OFF	ON/OFF

Factory settings		min./max.	jed.
Temp. decrease	0	0 / 90	°C

In the installation menu:



Example: configured 1 electric heater and 1 conventional source



3.x. DHW one – time

By selecting the conventional source from this menu (one or more of them together if existing) the DHW is reheated one-time until the set temperature (either in the set time or outside of it).

After the end of reheating option DHW one – time is automatically switched off

NOTE: Conventional sources must be switched on (in their menus) by which the DHW reheating would like to be done.

Factory settings		selection
DHW one – time	OFF	Electric heater/boiler 1/boiler 2



3.x. Party function

Party function enables the DHW heating by switched on conventional sources a certain selected time (independent on schedual).

After the end completion of the selected time Party function, the options switches off automatically.

3.x.1. Party function

By switching on this option the DHW is reheated until the set DHW tank temperature by switching on the conventional sources a certain time, which is selected in the menu Duration.

After the expiration of the selected time the Party function automatically switches off.

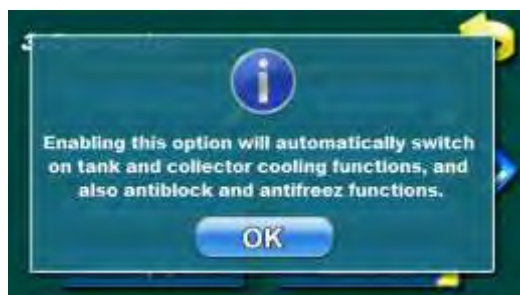
Factory settings		selection
Party function	OFF	ON/OFF



3.x.2. Duration

In this menu is defined how long from the moment of the Party function actuation the DHW reheating will last according to the set temperature. After the expiry of the selected time the Party function automatically switches off.

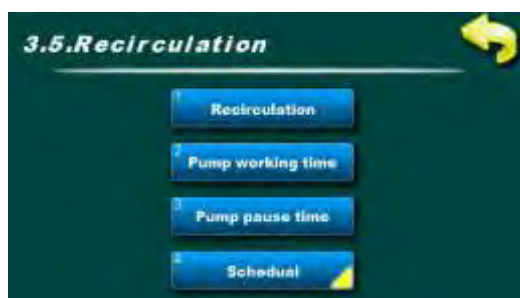
Factory settings		selection	unit
Duration	1	1/3/6/12	h



3.x. Holiday option

The holiday option includes system safety functions to postpone as long as possible the appearance of steam in the solar collectors and to prevent the pump and valves blockage due to very little or none water consumption. By the actuation of the Holiday option the tank and collector cooling function is activated aswell the pump/valve safety function and frost protection of the water in the collectors. If it is not wished to activate all before mentioned functions at once, the Holiday option must be switched off and the individual wished safety functions need to be activated manually.

Factory settings		unit
Holiday option	OFF	ON/OFF



3.x. Recirculation

In this menu you can find the menus connected with the setting of the DHW recirculation operation parameters.

In this menus you can set the time of work and pause of the recirculation pump and define the time interval in which the operation and inactivity time of the pump will be active.

NOTE: It is necessary to switch it on in the installation menu.



3.x.1. Recirculation

In this menu the recirculation function can be switched on or off. All preset times aswell the schedule remain as adjusted.

Factory settings		unit
Recirculation	OFF	ON/OFF

3.x.2.Pump working time

Adjusting the pump working time when the recirculation is active.

NOTE: The time must be adjusted to the recirculation system.

The recommendation is to set the recirculation pump work as short as possible in order to cooldown the DHW tank as less as possible.

Factory settings		min./max.	jed.
Pump working	5	1 / 1440	min

3.x.3. Pump pause time

Adjusting the pump pause time when the recirculation is active.

NOTE: Time must be adjusted to the recirculation system.

The recommendation is to set the recirculation pump pause as long as possible in order to avoid to cooldown the DHW tank.

Factory settings		min./max.	jed.
Pump pause time	15	0 / 1440	min



3.x.4. Schedule

In this menu you can find the menus connected with the schedule setting for the recirculation.

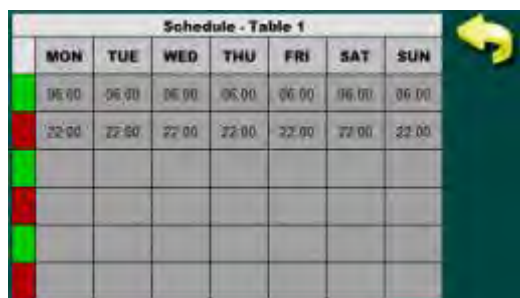
The schedule time can be switched off or one or two tables selected with the set time intervals of the active and inactive function.

3.x.4.1. Schedule

In this menu it is possible to switch on/off the schedule and select one or two tables according to which the DHW recirculation will operate.

NOTE: If the recirculation is switched on, and the schedule is switched off, the recirculation will operate according to the set time non – stop (24/7), ie the recirculation pump will operate also in the time when it is not needed and will unnecessarily cooldown the DHW tank.

Factory settings		selection
Schedule	ON	OFF/Table1/Table2



3.x.4.2. Table 1

In this menu it is possible to set 3 time intervals [3 start (green field) and 3 stop (red field)) for each day in the week in which the pump will work according to the set work/pause time.

Factory settings: the recirculation is enabled from 06:00 until 22:00 hours each day in the week. From 22:00 hours first day until 06:00 hours next day the recirculation does not operate.

Factory settings		selection
Table 1	06:00-22:00	mon/tue/wed/thu/fri/sat/sun

3.x.4.3. Table 2

In this menu it is possible to set 3 time intervals [3 start (green field) and 3 stop (red field)) for each day in the week in which the pump will work according to the set work/pause time.

Factory settings: the recirculation is enabled from 06:00 until 22:00 hours each day in the week. From 22:00 hours first day until 06:00 hours next day the recirculation does not operate.

Factory settings		selection
Table 2	06:00-22:00	mon/tue/wed/thu/fri/sat/sun



3.x. Legionella protection

In this menu you can find the menus connected with the tank disinfection function settings ie the legionella protection.



3.x.1. Legionella protection

In this menu the legionella protection function can be switch on or off.
All preset times aswell the schedule and temperatures remain as adjusted.

Factory settings		selection
Legionella protection	OFF	ON./OFF.

**3.x.2. Protection temperature**

The Legionella bacteria lives and develops itself in the areas with weak or none circulation at the temperature between 20°C and 55 °C. On higher temperatures the bacteria dies slowly, while above 70°C the bacteria instantly dies.

In order to have an efficient bacteria appearance protection, the tanks and piping must be kept a certain time above 65°C to have an efficient disinfection.

Factory settings		min./max.	jed.
Protection temp.	70	60 / 90	°C

3.x.3. Schedule

In this menu you can find the menus connected with the setting of the switching time for the legionella protection.

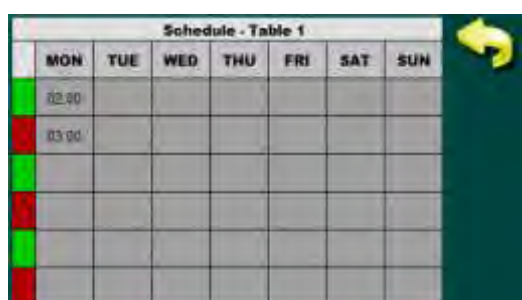
The schedule can be switched off or one or two tables can be selected with the preset time intervals of the active and inactive function.

3.x.2.1. Schedule

In this menu it is possible to switch on/off the schedule and to select one or two tables according to which the legionella protection will be switched on.

NOTE: If the schedule is switched off the legionella protection will not operate until one of the tables with the set time is selected.

Factory settings		selection
Schedule	Table 1	OFF/Table1/Table2

**3.x.3.2. Table 1**

In this menu it is possible to set 3 time intervals (3 start (green field) and 3 stop (red field)) for each day in the week on which the legionella protection will be switched on.

Factory settings: Legionella protection is active one day in the in the week (on Monday) from 02:00 until 03:00 hours.

Factory settings		selection
Table 1	02:00-03:00	pon

3.x.3.3. Table 2

In this menu it is possible to set 3 time intervals (3 start (green field) and 3 stop (red field)) for each day in the week in which the legionella protection will be switched on.

Factory settings: Legionella protection is active one day in the in the week (on Monday) from 02:00 until 03:00 hours.

Factory settings		selection
Table 2	02:00-03:00	pon



primjer: konfigurirano 3 konvencionalna izvora

3.x.4. Choose source (source selection)

In this menu it is possible to select the conventional source with which we would like to disinfect the tank according to the schedule and set temperature. The selected source must be able to reach the set temperature at the chosen time (in the menu only the configured conventional sources are listed).

Factory settings		selection
Choose source	Electric heater	Electric heater/Boiler1/Boiler 2

3.x.5. Skip legionella time

In this menu it is possible to switch on or off the skip legionella time function for the Legionella protection.

If the function is switched on, and in the time interval between two activation terms of the tank protection, the set temperature and the disinfection time duration is reached, when the next activation term for the protection arrives, the controller skips it and waits for the next term.

Factory settings		selection
Skip legionella time	OFF	ON/OFF



3.x.6. Disinfection duration

Setting of time in which the water temperature on the upper sensor in the tank must be above the set protection temperature in order to consider that the disinfection was successfully performed.

Factory settings		min./max.	jed.
Disinfection duration	15	1 / 1440	min

3.x.7. Legionella recirculation

In this menu it is possible to switch on and off the recirculation operation when the Legionella protection is active in order to disinfect the piping (the condition is that the recirculation is configured in the system).

When the conventional source starts up, also the recirculation pump switches on, and operates for as long as the disinfection time is set.

NOTE: The recirculation must exist and it is needed to switch it on in the installation menu.

Factory settings		selection
Legionella recirc.	OFF	ON./OFF

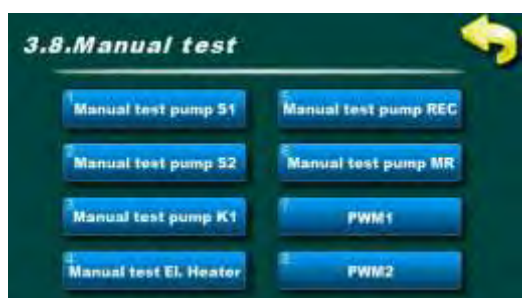


3.x. Pump/valve protection

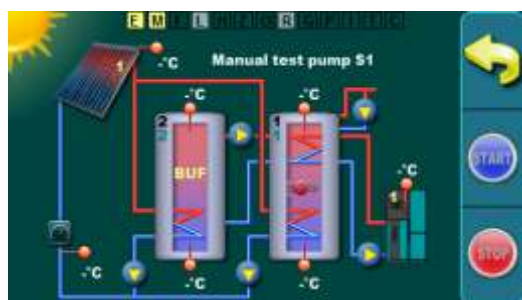
The pump/valve protection follows the activity of the individual output (pump or valve) as due to a long – term inactivity the pump/valve would not block. By setting the off inaction time (in the installation menu) it is possible to determine the maximum inaction time of the output, after which the controller activates the output for 60 seconds.

Factory settings		selection
Pump/valve protection	OFF	ON/OFF





Example: configured 2 tanks with PWM pumps, 1 conventional source, 1 electric heater, recirculation pump and mixing pump



1 solar flat collector field / vacuum tube collector / 1 DHW tank / 1 buffer tank / pumps / electric heater / boiler 1 / mixing/reheating / flow meter / return sensor / outer temperature sensor / recirculation

3.x. Manual test

Depending on the configured system components and its outputs, during the manual test it is possible to test all turned on outputs.

NOTE: Number and type of menu depends on the turned on exits in the installation menu.

If there are PWM outputs, in manual tests you can set wanted speed of each PWM output (factory on 100%).

3.x.1. Manual test pump S1

By pressing the button START the output is turned on (in this case the tank 1 pumps) and by pressing the key STOP the output is turned off (in this case the tank 1 pump). With the button RETURN it returns the previous screen.

When the Manual test is switched on, the marking of the Manual test (M) function lights yellow.

Depending on the selected output, with the buttons START and STOP the individual outputs are manually switched on or off.



3.x. Internet supervision

If the CM – WiFi BOX is embedded, the controller automatically recognizes the device and under the user and PIN the menu Internet supervision appears.

In this menu it is possible to switch on/off the supervision or the supervision and control via the WiFi network, enter the name of the WiFi network and the password, make the time synchronization, select the time zone and do the manual reset of the connection.

The user can adjust and commission the WiFi Box by him/herself.



3.x.1. Internet supervision

In this menu it is possible to switch on and off the Internet supervision and to choose only Supervision (it is not possible to change the parameters) or Supervision and control (possible to change the parameters).

Factory settings		selection
Internet supervision	Sup.+control.	OFF/Supervision/Sup.+control



3.x.2. WiFi network name

In this menu the name of the WiFi network is entered on which the WiFi Box is connected.

It is possible to enter 31 signs, with big/small letters, numbers and signs.

REMARK: It is obligatory to enter the correct network name by respecting the big and small letters and other signs.

3.x.2. WiFi password

In this menu WiFi password to which Cm WiFi-box will connect must be entered. Possible is to enter 31 characters, with upper and lower case, numbers and symbols.

NOTE: Insert correct network password paying attention to the upper and lower case, numbers and symbols.

3.x.4. Time synchronization

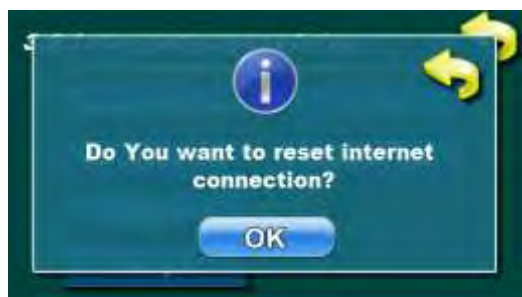
In this menu the controller time synchronization is enabled with the server.

Factory settings		selection
Time synchr.	ON	ON/OFF

3.x.5. Time zone

In this menu it is possible to change the time zone where the boiler is installed.

Factory settings		min./max.	jed.
Time Zone	1h	-12 / 14	h



3.x.6. Connection reset

In this menu it is possible to manually reset the Internet connection. If the sending of data to the web server is blocked, it is possible to manually reset connection.

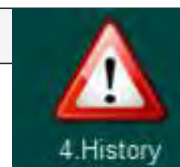


Cm WiFi – box requires an active DHCP access point server (for instance router, access point) as the manual adjusting of the network parameters is not possible. For additional information please contact the local network administrator.



For detailed adjustment of the Cm WiFi – box please look into the technical manual for the Cm WiFi – box delivered together with the device.

4. HISTORY



4. History

In the menu 4. History you can find information about the history of error and warnings. After the 50th written item the oldest one will be erased when a new one appears.

The history of errors/warnings/ cannot be erased.

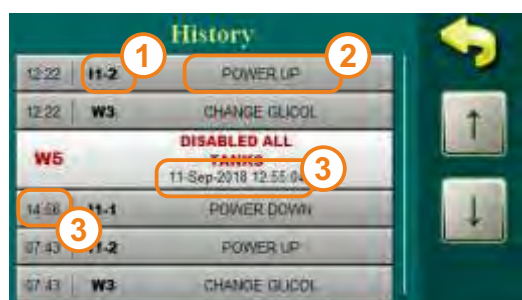


4.1. Errors

In this menu it is possible to view/browse history of errors (E) in the system – time of emergence, code and the name of the emerged error.

- 1 - error code
- 2 - error name
- 3 - error date and time of emergence

You can find the list of all codes and error names at the end of this instructions.



4.2. Warnings

In this menu it is possible to browse the warnings (W) and information (IW) in the system – time of emergence, code and name of warning/information.

- 1 -warning/information code
- 2 - warning/information name
- 3 - warning/information date and time of emergence

You can find the list of all codes and warning/information names at the end of this instructions.

By pressing the error/warning/information it is possible to read the cause and the possibility how to remove the error or warning.

5. DISPLAY



5. Display

In the menu 5. Display it is possible to set the functions connected with the screensaver, language selection, initial message time, date and time and the volume and type of sound

5.1. Screensaver

Time after which the screensaver appears to avoid a display damage due to a long – time presence of the same image. By pressing the display or by appearance of an „Error „ or „ Warning „ the screen saver switches off until the end of the next recorded time or until the error/warning is confirmed.

Factory settings		min./max.	unit
Screensaver	600	10 / 43200	sec

5.2. Language selection

In this menu it is enabled or disabled to display the initial screen with the language selection when pressing the main switch. In case you select „Switched off, , after pressing the main switch the controller will turn on with the previous set language and after a certain time of „initial message time, , the main screen will appear.

NOTE: It is obligatory after the language selection to switch off the „Language selection, ,to enable the controller to start up automatically after the arrival of electricity. If the „Language selection, , is not switched off, after the electricity arrival the controller/regulation will wait for someone to select the desired language in order that the main screen and possible errors appear.

Factory settings		selection
Language selection	ON	ON/OFF

5.3. Initial message time

Setting of initial message duration which appear after switching on the main switch.

Time is running only if the „Language selection, , is set on „OFF, ,.

Factory settings		min./max.	unit
Language selection	5	0 / 20	sec



5.4. Date and time:

Current date and time settings.

NOTE: If the date and time is not correct, the schedule time will not work properly. If the clock starts to be late or it resets on 00:00 and the date on 01.01.2000 it is necessary to replace the battery in the controller display (CR1220) (see chapter battery replacement).

5.5. Sound volume:

Setting one out of 3 sound volumes by pressing the display or a complete volume switch off.

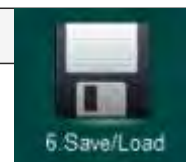
Factory settings		selection
Sound volume	2	OFF/1...3

5.6. Sound type:

Selecting on out of 10 possible sound types which are heard when pressing the display.

Factory settings		selection
Sound type	Type 3	Type 1...Type 10

6. SAVE/ LOAD



6. Save/Load

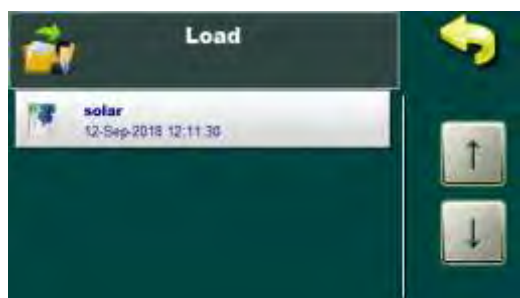
In this menu you can find the menus connected with the saving and loading of changed settings.



6.1. Save

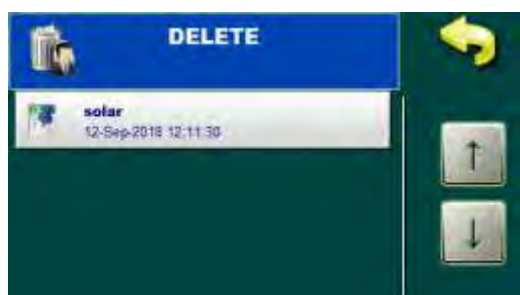
Saving of current user's files (settings). It is possible to save it under a new name or under the existing one.

The file names can contain big and small letters, numbers and signs until the max. length of 24 signs. The selection of big/small letters/signs is done by pressing the button with the arrow (on the keyboard the upper right corner).



6.2. Load

Loading of saved user's files (settings).



6.3. Load service

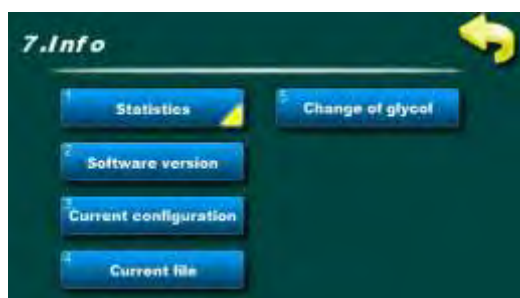
Loading of files saved under PIN (serviceman files).

6.4. Delete

Deletion of previous saved files.

The serviceman files is possible to delete only under PIN.

7. INFO



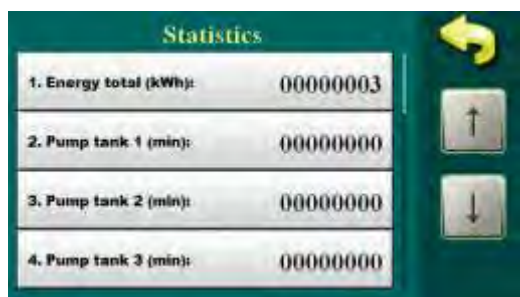
7. Info

In this menu you can find the menus connected with the system info and software.



7.1. Statistics

In this menu you can find the menus connected for the display of the solar system statistical data.



7.1.1. Numerical display

Here is displayed the statistics of work of a single output (in minutes of operation) and the total collected energy (in kWh/MWh) are shown.



7.1.2. Display graphs

The menus connected with the display of graphical statistical data. Graphs connected with the collected energy (in 12 months) and the temperature diagrams (24 h and 48 h).



7.1.2.1. Energy graphs

Menus connected with the display of the graph of collected energy. If the columns do not fit into the visible chart surface/area, by help of the multiplier it is possible to reduce or increase the chart surface. The collected energy can be viewed per month within a year.

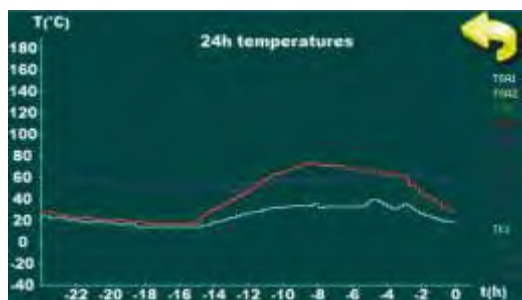
7.1.2.1.1. Multiplier

If the columns of the collected energy do not fit into the visible chart surface, by help of the multiplier it is possible to reduce or increase the chart area (x1,x2,x3,x5,x10) (multiplication of the axes with the energy).



7.1.2.1.2. 12 months energy

As the solar energy is collected the chart is drawn automatically in the month in which we are currently present. On the display it is always possible to see the collected solar energy in the interval of one year in periods of one month.



7.1.2.2. Temperatures

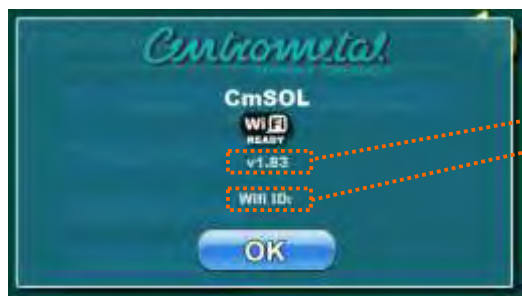
Menus connected with the display of the graph obtained temperatures from the configured sensors.

7.1.2.2.1. 24h temperatures

The temperature diagram from the configured sensors in a time span of 24 hours.

7.1.2.2.2. 48h temperatures

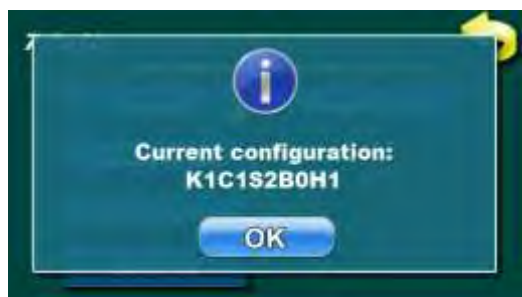
The temperature diagram from the configured sensors in a time span of 48 hours.



7.2. Software version

Software version and WiFi box identification number:

- current software version loaded in the controller
- if connected, WiFi ID (identification number)

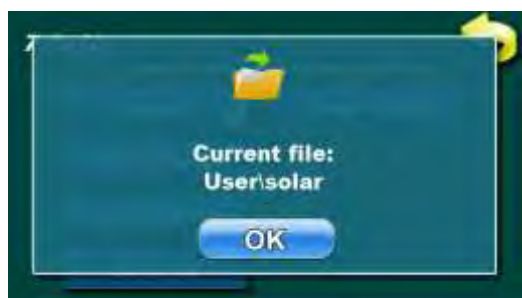


7.3. Current configuration

Selected system configuration.

1. K x - number of boilers (0, 1, 2)
2. C x - number of collector fields (1, 2)
3. S x - number of tanks (1, 2, 3, 4)
4. B x - number of swimming pools (0, 1)
5. H x - hydraulic connection (1(pump), 2 (2 way zone valve), 3 (3 way zone valve))

Example: configured: 1 boiler, 1 collector circuit, 2 tanks, 1 swimming pool, hydraulic connection – 2 way zone valve



7.4. Current file

Current selected file under which the controller is operating. It is possible to select the file which is saved under the basic menu (user) or a file saved under PIN (serviceman).



8.9.5. Last change of glycol

Depending on the solar system operation and the recommendation of the glycol manufacturer, the glycol in the solar system must be regularly replaced (due to often glycol overheating (steam in the collectors) glycol ages faster and thickens which lowers the solar collector efficiency and finally can lead to solar collector stoppage). **The recommendation is to replace glycol every 2 years.**

After the glycol replacement in the solar installation you need to reset the counter in the menu 8.12.2. Reset glycol counter, by help of which a new time counting of 2 years will start and after which a warning appears for the replacement of glycol in the solar system.

NOTE: The warning for the glycol replacement appears after the expiry of 2 years from the last reset of the glycol counter. After the appearance of the warning the solar system continues normally with the operation, only the warning is active that long until the counter is annulled.

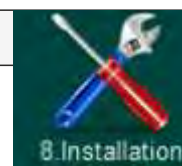
The annullment of the counter warning for the glycol replacement can be found in the installation menu -> 8.12.2 Reset glycol counter.



SETTING OF PARAMETERS UNDER PIN (SYSTEM CONFIGURATION)

MENUS FOR THE SYSTEM CONFIGURATION

8. INSTALLATION



By pressing the key 8. Installation you enter the menus designed for the solar system configuration. To enter the menu it is needed to write the PIN (0000) (which cannot be changed), to prevent the entering into this menu accidentally.



In the menu 8. Installation the individual system components are set (it is not intended for everyday use).

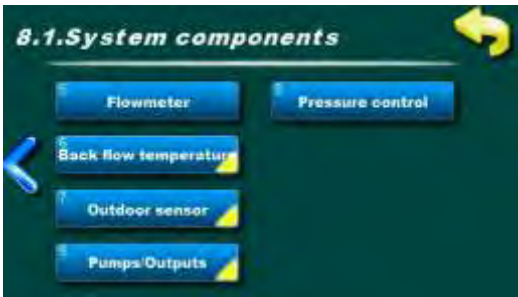
Menus:

1. **System components** - selection of existing components in the system and output configuration
2. **Solar collector** - parameter setting of selected solar collector fields
3. **Tank** – parameter setting of selected tanks
4. **Tank reheating** - parameter setting of selected conventional sources for the tank reheating
5. **Recirculation** - recirculation parameter setting in case of its existence
6. **Legionella protection** - parameter settings for the tank disinfection ie legionella protection
7. **Energy measuring** - parameter setting connected with the solar fluid and the flow through the solar collectors
8. **Manual test** - testing of the operation of every individual component connected with the controller
9. **Save/Load** - saving/deleting/loading the controller settings and returning the controller to factory settings
10. **Information** - Browsing the error history , software version and the records of the enterings into the installation menu
11. **Internet supervision** - WiFi network parameter settings for the controller connection with the Internet
12. **Reset counters** - the return of the energy and glycol counter to zero (0)



THE NUMBERS OF MENU AND MENUS ARE CHANGING ACCORDING TO THE SELECTED CONFIGURATION (here are shown only fix numbers (which are always the same), and other changeable numbers are marked with x, menu depth where the parameter is located).

8.1. SYSTEM COMPONENTS



8.1. System components

In the menu 8.1. System components you can find the menus connected with the selection of the existing components in the system and the configuration of the individual controller outputs.



8.1.1. Collectors

In this menu you can find the menus connected with the selection of the number of the solar collector fields and the type of the installed solar collectors.



one field



two fields

8.1.1.1. Collector fields

In this menu it is necessary to select the number of the solar collector fields (the solar collector field is a set of collectors connected in one system with one solar collector pump). Two solar collector fields are usually installed as one on the east part and one on the west part of the roof and each field is separately connected with the tank with its solar collector pump.

Factory settings		selection
Collector fields	One field	One field / Two fields



8.1.1.2. Field type

In this menu it is necessary to select the type of used collectors in the solar collector field.

It is always possible to select only one type of collectors, whether one or two solar collector fields were selected.

The selection of the solar collectors only serves for the graphical display of the solar collectors on the screen.

Factory settings		selection
Field type	Vacuum tube	Vacuum tube/Flat plate



Vacuum tube collector



flat plate collector



8.1.2. Tanks

In this menu you can find the menus connected with the selection of the number and type of installed tanks and the selection of their connection (with collectors and mutually).

It is possible to configure up to 4 tanks.

It is possible to select one of three hydraulic connection.

It is possible to select mutual reheating of the first 2 tanks (reheating of the DHW tank with the buffer tank).



8.1.2.1. Tank 1, type

In this menu it is necessary to select the type of the installed tank (1 – 4).

Tank 1 must always exist. The types of tanks can be DHW tank, buffer tank (BUF), buffer tank with DHW tank (BUF with DHW) or pool (Pool).

Only with the Tank 1 it is possible to configure reheating with conventional sources and the recirculation of DHW.

If conventional sources are configured (boiler 1,2 or electric heater), the installation of the upper sensor in the Tank 1 is obligatory. If the upper sensor in the Tank 1 is not installed, the conventional sources cannot be included into the tank reheating.

The solar collector pump operates according to the temperature difference of the lower tank sensor and the solar collector sensor.

If the pool is configured as a tank, the pool sensor is configured as the upper tank sensor and the solar collector pump operates according to the temperature difference between the upper tank sensor (pool) and solar collector sensor. The pool must always be configured only as the last tank (it is not possible to choose it between two tanks), as the tank 1, 2 or 3.

The controller can control manage each tank with two sensors – upper and lower (except the pool where only the upper sensor is used) or only with one, lower sensor, but in this case some of the controller functions are disabled.

The upper sensor serves for the tank safety and protection functions (maximum temperature), for the tank mixing/reheating function and for the tank reheating with conventional sources.

The lower sensor serves for the solar collector tank reheating.

Each configured tank has on itself in the upper left corner the ordinaly number marking (black number) and below the tank ordinaly number the priority marking of the tank in the configuration (green number).



DHW tank
1 heat exchanger
2 temperatures



DHW tank
2 heat exchangers
2 temperatures

DHW

DHW



Buffer tank
1 heat exchanger
2 temperatures



Buffer tank with
embedded DHW tank
1 heat exchanger
2 temperatures

BUF

BUF with DHW



POOL
1 temperature

Pool

Factory settings		selection
Tank 1, type	DHW	Doesn't exist/DHW/BUF/BUF with DHW/Pool
Tank 2, type	doesn't exist	Doesn't exist/DHW/BUF/BUF with DHW/Pool
Tank 2, type	doesn't exist	Doesn't exist/DHW/BUF/BUF with DHW/Pool
Tank 2, type	doesn't exist	Doesn't exist/DHW/BUF/BUF with DHW/Pool

8.1.2.2. Tank 2 type

In this menu it is necessary to select the installed tank type 2. For details please see description Tank type 1.

8.1.2.3. Tank 3 type

In this menu it is necessary to select the installed tank type 3. For details please see description Tank type 1.

8.1.2.4. Tank 4 type

In this menu it is necessary to select the installed tank type 4. For details please see description Tank type 1.



8.1.2.5. Hydraulic tank connection

In this menu it is necessary to select the hydraulic connection mode of the tanks with the solar collectors.

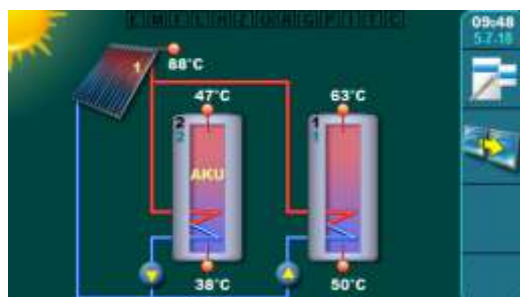
In all schemes the tanks are connected serial with DHW – the tanks are always loaded according to the selected loading priority (first the first one, subsequently the second ...).

Depending on the installed configuration it is necessary to select one of three offered connection modes:

Pump: each configured tank has its own solar collector pump.

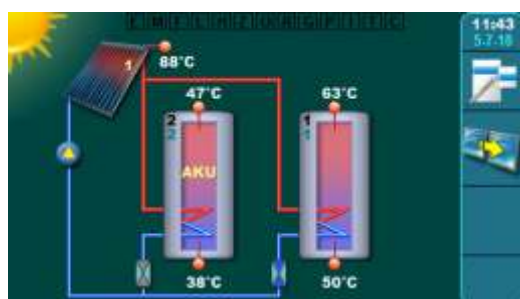
2 way zone: each configured tank has its 2 way valve (valve with spring !) + common solar collector pump.

3 way zone: the solar collector flow overlaps the 3 way zone valve (valve with spring !) depending on the given priority (2 tanks 1 valve, 3 tanks 2 valves , 4 tanks 3 valves). The 3 way zone valve must always be installed with the zero position towards the primary tank (when the valve gets contact it overlaps onto the secondary tank, when the contact stops the spring returns).

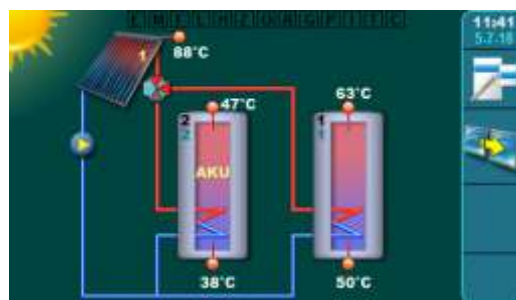


Example: configured 2 tanks, hydraulic connection: - pump

Factory settings		selection
Hydr. tank connection.	Pump	Pump/3 way zone valve/2 way zone valve



Example: configured 2 tanks, hydraulic connection: 2 way zone valve

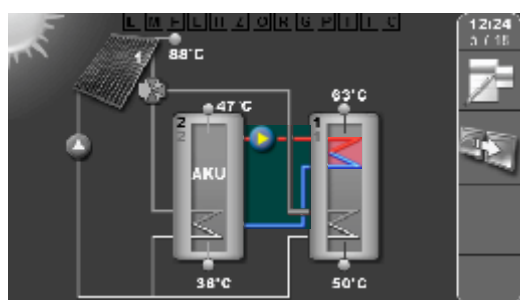


Example: configured 2 tanks, hydraulic connection: 3 way zone valve



8.1.2.6. Mixing – reheating

If there is a need for the reheating of for example the primary DHW tank with the secondary buffer tank (when both tanks are reheated by solar energy, and the DHW is cooled down, it is possible to reheat the DHW tank by help of the buffer tank (if energy exists in the tank)), the controller can manage the pump between the buffer tank and the upper heat exchanger in the DHW tank on the basis of the temperature difference between the upper buffer tank temperature and the upper DHW tank temperature and the set difference.



Example: configured 2 tanks, hydraulic connection: - 3 way zone valve, mixing /reheating

Factory settings		selection
Mixing-reheating	Not exist	Not exist/Exist



8.1.3. DHW heating

In this menu you can find the menus connected with the selection of the installed conventional sources for the heating of the primary Tank 1. It is possible to reheat only the Tank 1 with the installed upper temperature sensor.

Electric heater switching on is possible only over an additional contactor. The controller optionally (and in current conditions) switches on/off the pump between the tank 1 and the boiler.

(In order to switch the conventional source it is obligatory to install the upper Tank 1 sensor. After the configuration, the conventional source must be set in the menu 8.4. Tank (DHW) heating).



8.1.3.1. Installed electric heater

If the electric heater is installed in the Tank 1, in this menu it must be marked in order to be existing in the configuration.

When the electric heater is configured, it is possible to switch it on/off from the operation and it is needed to select the Schedule during which the electric heater operation is permitted.

NOTE: the connection of the electric heater with the controller only over a contactor!

Factory settings		selection
Installed el. heater	Not exist	Not exist/Exist



8.1.3.2. Boiler type 1

If a conventional source exists connected with Tank 1, in this menu you need to select the type of the conventional source to be used for the heating of the Tank 1.

The selection of the Boiler 1 type serves only for the graphical display of the first conventional source on the screen.

Factory settings		selection
Boiler type 1	Not exist	Not exist/Wood/Pellets_Wood chip/Gas_oil/Heat pump/Electric boiler



8.1.3.3. Boiler type 2

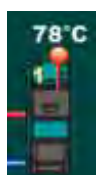
If a second conventional source exists connected to the Tank 1 in this menu it is necessary to select the type of the second conventional source to be used for the reheating of the Tank 1.

The selection of the Boiler 2 type serves only for the graphical display of the second conventional source on the screen.

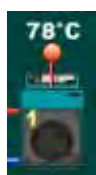
Factory settings		selection
Boiler type 2	Not exist	Not exist/Wood/Pellets_Wood chip/Gas_oil/Heat pump/Electric boiler



Boiler type:
Pellets/Wood chip



Boiler type:
Wood



Boiler type:
Gas/Oil



Boiler type:
Heat pump



Boiler type:
Electric boiler

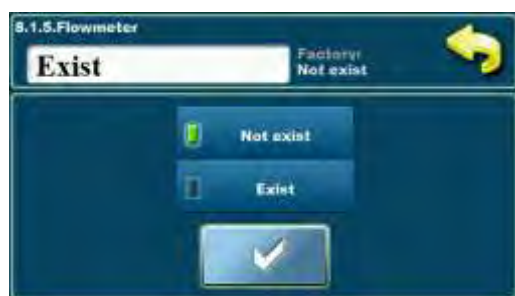


8.1.4. Recirculation installed

If the system has a recirculation installed to the Tank 1, in this menu it needs to be marked in the configuration.

When the recirculation is configured, it is possible to switch it on/off, it is needed to select the operation interval of the pump start/stop and it is possible to select the Schedule during which the recirculation operation is permitted.

Factory settings		selection
Recirculation installed	Not exist	Not exist./Exist



8.1.5. Flowmeter

If a flowmeter is installed in the system in this menu it needs to be marked to be existing in the configuration.

If the flowmeter is switched on, it is needed to enter its characteristics in the following menus (the constant and volume per pulse and the sensor address).

Factory settings		selection
Flowmeter	Not exist	Not exist/Exist



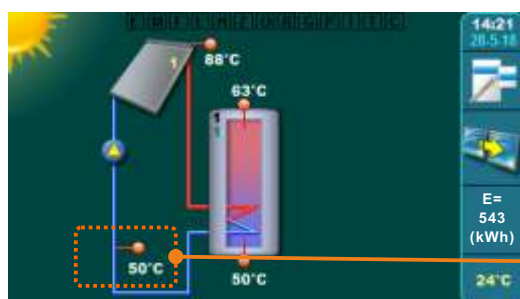
8.1.6. Back flow temperature (collector)

If the back flow temperature sensor is installed in the system in this menu it is necessary to select the address and sensor type.

The sensor serves for a more accurate measuring of the collected energy from the solar collectors (with solar collector sensor and correct entered or measured fluid flow through the collectors).

If the back flow temperature sensor is not installed, the controller takes as the back flow temperature the lower tank temperature.

NOTE: The measuring of energy is done over the temperature in the solar collector sensor, the temperature in the back flow sensor (or lower tank sensor) and entered flow (or flow value from the installed flow meter). The calculation of the collected energy from the solar collectors depends a lot on the accuracy of the measured temperatures and the entered/measured fluid flow through the solar collectors. In case of 2 solar collector fields the back flow sensor is installed on the return of the first field while for the measuring of energy of the second field the lower tank temperature is taken into consideration.



built in and configured back flow sensor

Example: configured 1 tank, 1 flat plate collector, return/back flow sensor, outdoor/outer temperature sensor

8.1.6.1. Sensor address

It is necessary to set (choose) address (input) of the connected back flow sensor (it is possible to connect on one free out of 10 addresses).

Factory settings		selection
Sensor address	Isključeno	OFF./T1/.../T10



8.1.6.2. Sensor type

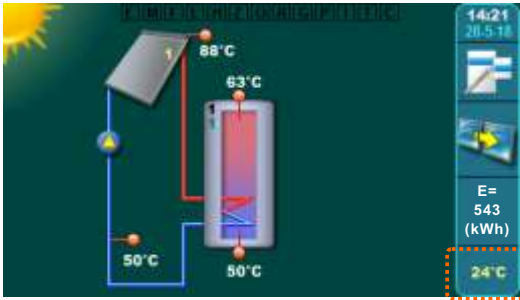
If the sensor type NTC is installed here it is necessary to change the sensor type from PT1000 to NTC.

Factory settings		selection
Sensor type	PT1000	PT1000/NTC



8.1.7. Outdoor sensor

If in the system is installed outdoor temp. sensor in this menu it is necessary to select the address and sensor type.
The outdoor temperature sensor shows the information on the main screen about the current outdoor temperature (additional equipment).



Installed and configured outdoor temperature sensor

Example: configured 1 tank, 1 flat collector, back flow sensor, outdoor temperature sensor

8.1.7.1. Sensor address

It is necessary to set (choose) address (input) of the connected outdoor temperature sensor (it is possible to connect on one free out of 10 addresses).

Factory settings		selection
Sensor address	OFF	OFF./T1/.../T10



8.1.7.2. Sensor type

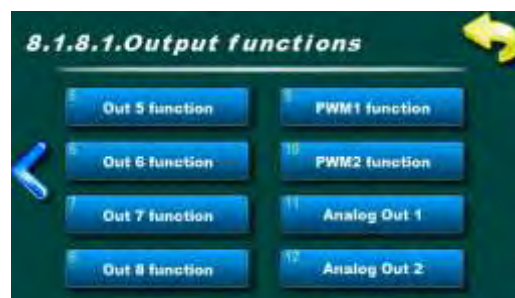
If the sensor type NTC is installed here it is necessary to change the sensor type from PT1000 to NTC.

Factory settings		selection
Sensor type	PT1000	PT1000/NTC



8.1.8. Pumps / Outputs

In this menu function of the output that is used must be defined (max. 8 outputs) and used output standby time can be defined after which function of pump and valve protection is activated due to longterm inactivity.



8.1.8.1. Output functions

In this menu function of the output that is used must be defined (max. 8 standard outputs). 2 PWM and 2 analog outputs.



8.1.8.1.1. Output 1 function

In this menu function of the output that is used must be defined (one of the 22 functions - pump of collector, tank, boiler, recirculation, pool, mixing/reheating, electric heater, zone 2 way or zone 3 way valve).

8.1.8.1.2. Output function 2

8.1.8.1.3. Output function 3

8.1.8.1.4. Output function 4

8.1.8.1.5. Output function 5

8.1.8.1.6. Output function 6

8.1.8.1.7. Output function 7

8.1.8.1.8. Output function 8

see 8.1.8.1.x. Output 1 function

Factory settings		selection
Output 1 function	Disabled	Disabled/Pump collector1/Pump collector2/ Pump tank1/Pump tank2/Pump tank3/ Pump tank4/Pump boiler1/Pump boiler2/ Electric heater/Recirculation pump/Pool pump/ Exchanger pump/Pump MRh/ 3 way valve1/3 way valve2/3 way valve3/3 way valve4/ Valve1/Valve2/Valve3/Valve4
Output 2 function		
Output 3 function		
Output 4 function		
Output 5 function		
Output 6 function		
Output 7 function		
Output 8 function		

8.1.8.1.9./10. PWM 1/2 function

In this menu functions of outputs for PWM pumps must be defined (one of 6 functions - collector pumps, tank pumps to the collector).

NOTE: Power to the pump is recommended to take from external power supply, solar controller just controls the pump.

8.1.8.1.11./12. Analog Out 1/2

In this menu functions of outputs for analog steered pumps (0-10V) must be defined.

NOTE: Power to the pump is recommended to take from external power supply, solar controller just controls the pump.

Factory settings		selection
Function PWM 1	Disabled	Disabled/Pump collector1/Pump collector2/ Pump tank1/Pump tank2/Pump tank3/ Pump tank4/
Function PWM 2		
Function output 1		
Function output 2		



8.1.8.2. PWM Pumps

If PWM or Analog Output is enabled, here it can be minimum pump speed set up. If factory set value is too small ie. pump can not overcome pressure drop of installation, this value must be raised.

Factory settings		min./max.	
Pump min. speed	30	30 / 100	%



8.1.8.2. Pumps/Valves protection

In this menu pump/valve protection can be enabled. Also, standby time can be set after which pump/valve protection will be activated to prevent blocking due to the longterm inactivity.



8.1.8.2.1. Pumps/Valves protection

Pumps/valves protection function monitors activity of each output (pump or valve) to prevent blocking of the pump or valve due to longterm inactivity.

Factory settings		selection
Pump/valve protect.	OFF	ON/OFF



8.1.8.2.2. Off time

By setting the Off time, maximum inactivity time of each output is set after which controller activates output for 60 second.

Factory settings		min./max.	
Off time	48	1 / 720	h



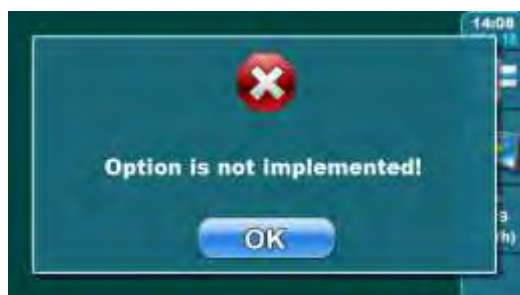
8.1.9. Pressure control

In case of installation of the pressure switch it must be enabled in this menu.

When this pressure switch is connected and enabled, position (address) where is connected must be set (address of the sensor T under Collector).

When the pressure in the solar system is too low, when pressure switch gives signal to the controller (system pressure on which pressure switch gives signal depends on the type and setting of the pressure switch) and low system pressure warning is displayed on the controller screen.

Factory settings		selection
Pressure control	Not exist	Not exist/Exist



"Option is not implemented!" - If you choose components of solar system that controller can not run, warning will appear on the main screen, after which a different configuration must be selected ie. other components of the solar system must be selected.

- see available schemes of components that controller can run at the end of these manual.

8.2. COLLECTOR



8.2. Collector

In this menu are settings for the work of the collector (one or two fields (if they exist)) and it's protection functions.

example: configured 2 collector fields, pressure control



8.2.1. Collector 1

In this menu settings for work of the collector 1 are set (maximum allowed collector temperature, enabling temperature of the collector 1 for start of the collector pump, puls start of the collector 1 pump and collector sensor address).



8.2.1.1. T MAX collector 1

Setting of the maximum temperature of the collector 1.

Pump of the solar collector field 1 works to the temperature in collectors [T MAX collector 1] after which stops (to protect the fittings from to high temperature, steam in the collectors and inability to operate the pump until temperature in the collectors is lower then set max. temp. of the collectors.

When temperature in the collectors falls below [T MAX collector 1 - 4°C] pump of collector field 1 starts to work again if other conditions are met.

NOTE: [T MAX collector] must be set according to the boiling point of the solar fluid in the solar system and always must be lower than the boiling point.

Factory settings		min./max.	unit
T MAX collector 1	140	30 / 150	°C



8.2.1.2. T enable coll.1

Setting of the minimum temperature of the collector 1 at which circulation trough collector 1 starts (working of the collector pump).

Factory settings		min./max.	unit
T enable coll.1	10	0 / 90	°C



8.2.1.3. Pulse collector start

In this menu are additional menus for setting the parameters for the pulse start of the pump (kick) of the collector field 1

If collector sensor isn't installed into collector (but somewhere on the flow tube) or there are more collectors in the same field, it's recommended to enable pulse start which in case of the inactivity of the collector pump, periodically starts it for some time to have better temperature reading of the solar fluid on the collector sensor.

NOTE: to often and to long work of the collector pump can unnecessarily cool down the tank! Work and pause time of the pump depends on the size and location of the collector field and collector sensor.



8.2.1.3.1. Pulse start collector 1

In this menu pulse start of collector can be enabled or disabled. All preset times and also schedules are valid.

Factory settings		selection
Pulse start coll.1	OFF	ON/OFF

8.2.1.3.2. Pump work time

Setting of the pump working time in pulse start.

NOTE: Working time must be adjusted according size and location of collector field and collector sensor to have accurate reading from the collector sensor to start heating the tank as soon as possible.

Factory settings		min./max.	unit
Pump working time	10	0 / 3600	sec

8.2.1.3.3. Pump pause time

Setting of the pump pause time (not working) in pulse start.

NOTE: Pause time must be adjusted according size and location of the collector field and collector sensor to have accurate reading from the collector sensor to start heating the tank as soon as possible.

Factory settings		min./max.	unit
Pump pause time	15	0 / 1440	min

**8.2.1.3.4. Schedule**

In this menu are additional menus for setting the schedule for working of the pump in puls start (kick) for the collector field 1.

Schedule can be disabled or selected one of two tables with set time intervals with enabled and disabled function of the pump.

8.2.1.3.4.1. Schedule

In this menu schedule can be enabled/disabled and one of the two tables can be selected according to which puls start of the pump will work.

NOTE: If the puls start of the pump is enabled and Schedule is set to Off, puls start of the pump will work all the time (24/7) according to the set work/pause time. In this case puls start of the pump will work also during the night and there is possibility to cool the tank trough the collector down.

Factory settings		selection
Schedule	Table 1	OFF/Table1/Table2

Schedule - Table 1						
MON	TUE	WED	THU	FRI	SAT	SUN
08:00	08:00	08:00	08:00	08:00	08:00	08:00
17:00	17:00	17:00	17:00	17:00	17:00	17:00

8.2.1.3.4.2. Table 1

In this menu it is possible to set 3 time intervals (3 start (green field) and 3 stop (red field) for each day in the week in which pump will work according the set pulse start.

Factory setting: Impulse start of the pump is active from 08:00 to the 17:00 every day in the week. From 17:00 of the first day to 08:00 next day puls start of the pump is not working.

Factory settings		selection
Table 1	08:00-17:00	mon/tue/wed/thu/fri/sat/sun

8.2.1.3.4.2. Table 2

In this menu it is possible to set 3 time intervals (3 start (green field) and 3 stop (red field) for each day in the week in which pump will work according the set pulse start.

Factory setting: Impulse start of the pump is active from 08:00 to the 17:00 every day in the week. From 17:00 of the first day to 08:00 next day puls start of the pump is not working.

Factory settings		selection
Table 2	08:00-17:00	mon/tue/wed/thu/fri/sat/sun

8.2.1.4. Collector 1 sensor address

It is necessary to set (choose) address (input) of the connected collector sensor (it is possible to connect on one free out of 10 addresses, regulation recommends input T1)

Factory settings		selection
Coll.1 sensor address	Not exist	Not exist./T1/.../T10

**8.2.x. Collector 2**

In this menu settings for working of the collector 2 are set (maximum allowed collector temperature, enabling temperature of the collector 2 for start of the collector pump, puls start of the collector 2 pump and collector sensor address).

Menus are equivalent to the menus for Collector 1 - for details see description 8.2.1. Collector 1.

**8.2.x. Collector cooling**

In this menu collector cooling can be enabled or disabled (through the tank) and set the difference for collector cooling start.

With the collector cooling function, boiling of the solar fluid in the collector wants to be delayed by increasing tanks temperature to the maximum temperature [T MAX tank = 90°C].

Collector cooling starts if the temperature in the collectors reaches the [TMAX collector -dTcooling (collector)] and if all tanks are full with energy to the [TMAX tank (set)].

[Tcoll.>TMAX coll. -dTcooling (collector)]

Collector cooling stops if Tcollector exceeds [TMAX collector] or temperature in the collectors falls below

[Tcoll.<TMAX coll. -dTcooling (collector) -2°C]

or if all tanks are full to the maximum [TMAX tank = 90°C]. If [TMAX tank=90°C] is set, maximum for the collector cooling is automatically raised to the 95°C.

NOTE: [TMAX collector] must be set according to the solar fluid boiling point and allways must be below than boiler point.



8.2.x.1. Collector cooling

In this menu collector cooling can be enabled or disabled (through the tank).

Factory settings		selection
Collector cooling	OFF	OFF/ON

8.2.x.2. Cooling difference

Setting of the difference when collector cooling starts [TMAX collector - dTcooling (collector)] (factory 140-20=120°C)

Factory settings		min./max.	unit
Cooling difference	20	1 / 50	°C



8.2.4. Antifreeze protection

In this menu collector antifreeze function can be set and temperature (of the collector) for start of this function can be set.

This function is used when in solar system is water and if outside temperature don't fall below 0°C. **In solar system always is recommendation to use mixture of the glycol and water** (solar antifreeze and water).

With this function enabled, circulation through the collector is started to try to prevent freezing of the collector with the heat of the tank.

Antifreeze protection starts when temperature in the collectors falls to the set temperature [Tstart] (factory +4°C).

Antifreeze function stops when temperature in collectors raised for +2°C from set temperature [Tstart] and when lower temperature in the tank falls to the +3°C (to prevent freezing of the tank).

Freezing protection start from tank with lowest priority to the tank with highest priority.

NOTE: Only use this function when only water is in the collectors. It is never recommended to fill the solar system with water only (without glycol)! By switching on the frost protection function, it is possible to cool the tanks. Possible significant energy consumption of conventional sources in heating tank due to "heating" the collector!

8.2.x.1. Antifreeze protection

In this menu collector antifreeze protection can be enabled or disabled.

Factory settings		selection
Antifreeze protection	OFF	OFF/ON

8.2.x.2. T start

Setting of the temperature (in the collector) to start the antifreeze protection.

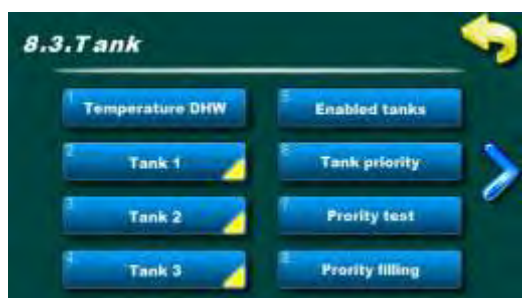
Factory settings		min./max.	unit
T start	4	0 / 10	°C

8.2.x. Pressure sensor address

In case there is pressure sensor installed, here must be set the connecting address (input) to which this sensor is connected (possible to connect to one of 10 addresses (inputs)).

Factory settings		selection
Pressure sensor add.	Not exist	Not exist./T1/.../T10

8.3. TANK



example: configured 3 tanks (DHW, BUF, Pool), priority test, mixing/heating function



8.3. Tank

In this menu are additional menus for setting the parameters for the tanks (depending of the set configuration and tank type, from 1 to maximum 4 tanks).



8.3.1. Temperature DHW

Setting the desired DHW temperature (domestic hot water), tank on upper sensor.

Conventional heating sources (el. heater, boiler1, boiler2) heats the tank to the set DHW temperature.

NOTE: DHW temperature is related only to the conventional heating sources. Solar collectors are heating tanks to the temperature [TMAX tank].

Factory settings		min./max.	unit
Temperature DHW	55	10 / 85	°C



8.3.2.1 T MAX tank 1

Setting the max temperature of the tank1.

Solar collectors are heating tank 1 to the temperature [T MAX tank 1] after which solar heating of the tank 1 stops and switches to the next tank according the priority (if exists).

If the collector cooling function is enabled and activated, tank temperature can rise up to max. 90°C (or 95°C if TMAX tank is set to 90°C).

Factory settings		min./max.	unit
T MAX tank 1	70	30 / 90	°C

If the pool is set as the last tank in the configuration, max. temperature of the pool can be set in following range:

T MAX tank X	28	15 / 40	°C
--------------	----	---------	----

8.3.2.2. TDcoll-tank (difference)

Setting the desired difference between temperature of the collector and temperature of the tank (lower sensor) for start and stop of the collector pump.

START pump coll. -> [Tcollector > TDcoll-tank + THcoll-tank].

STOP pump coll. -> [Tcollector < TDcoll-tank].

Factory settings		min./max.	unit
TDcoll-tank	4	1 / 10	°C

8.3.2.3. THcoll-tank (histeresys)

Setting the desired histeresys of the temperature between collector and tank (lower sensor) for start of the collector pump.

START pump coll. -> $[T_{\text{collector}} > T_{\text{Dcoll-tank}} + \text{THcoll-tank}]$.

STOP pump coll. -> $[T_{\text{collector}} < T_{\text{Dcoll-tank}}]$.

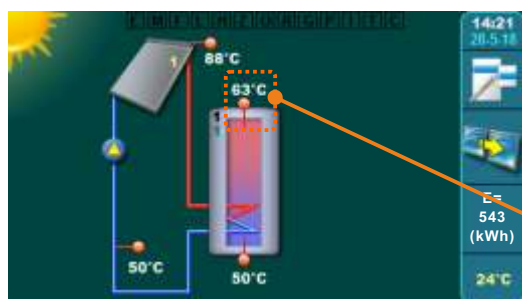
Factory settings		min./max.	
THcoll-tank	2	1 / 10	°C

**8.3.2.4. Sensor tank 1 upper**

Sensor tank 1 upper is used:

- stop of the collector pump when set maximum temperature in the tank is reached,
- protection function of tank cooling through the collector,
- for additional heating of the tank with the conventional heating sources (boilers and el. heater),
- One time DHW function
- Party function
- Mixing/heating function
- Holiday option
- Legionella protection

In this menu sensor address and type must be set.



installed and set sensor tank 1 up

example: configured 1 tank (with 2 sensors), 1 flat plate collector, back flow sensor, outdoor sensor

8.3.2.4.1. Sensor upper

It is necessary to set (choose) address (input) of the connected sensor upper (it is possible to connect sensor upper (it is possible to connect an one free of 10 addresses, controller recommends input T2).

Factory settings		selection
Sensor upper	Not exist	Not exist/T1/.../T10

8.3.2.4.2. Sensor type

If NTC sensor is installed, here must be changed from PT1000 to the NTC.

Factory settings		selection
Sensor type	PT1000	PT1000/NTC

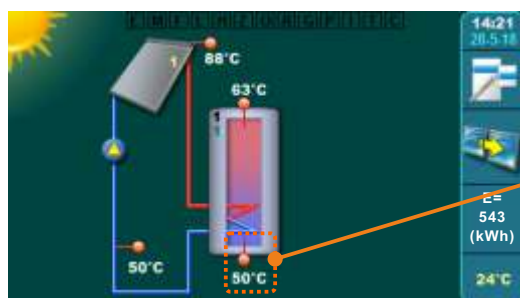


8.3.2.5. Sensor tank 1 lower

Sensor tank 1 lower is used:

- work of the collector pump.
- in case that back flow sensor isn't installed, for energy measurement (measurement is less precise than with back flow sensor).
- in case that sensor tank 1 upper isn't installed, it takes over its functions except additional heating function with conventional heating sources.
- at function of Collector cooling through the tank,
- at Collector antifreeze function,
- at Holiday option.

In this menu sensor address and type must be set.



installed and set sensor tank 1 lower

example: configured 1 tank (with 2 sensors), 1 flat plate collector, return flow sensor, outdoor sensor

8.3.2.5.1. Sensor lower

It is necessary to set (choose) address (input) of the connected sensor upper (it is possible to connect sensor upper (it is possible to connect an one free of 10 addresses, controller recommends input T3).

Factory settings		selection
Sensor lower	Not exist	Not exist/T1/.../T10

8.3.2.5.2. Sensor type

If NTC sensor is installed, here must be changed from PT1000 to the NTC.

Factory settings		selection
Sensor type	PT1000	PT1000/NTC



8.3.x.1 T MAX tank 2

Setting the max temperature of the tank2.

Solar collectors are heating tank 2 to the temperature [T MAX tank 2] after which solar heating of the tank 2 stops and switches to the next tank according the priority (if exists).

If the collector cooling function is enabled and activated, tank temperature can rise up to max. 90°C (or 95°C if TMAX tank is set to 90°C)

Factory settings		min./max.	unit
T MAX tank 2	70	30 / 90	°C

If the pool is set as the last tank in the configuration, max. temperature of the pool can be set in following range:

T MAX tank X	28	15 / 40	°C
--------------	----	---------	----

8.3.x.2. TDcoll-tank (difference)

Setting the desired difference between temperature of the collector and temperature of the tank (lower sensor) for start and stop of the collector pump.

START pump coll. -> [Tcollector > **TDcoll-tank** + THcoll-tank].

STOP pump coll. -> [Tcollector < **TDcoll-tank**].

Factory settings		min./max.	unit
TDcoll-tank	4	1 / 10	°C

8.3.x.3. THcoll-tank (histeresys)

Setting the desired histeresys of the temperature between collector and tank (lower sensor) for start of the collector pump.

START pump coll. -> [Tcollector > TDcoll-tank + **THcoll-tank**].

STOP pump coll. -> [Tcollector < TDcoll-tank].

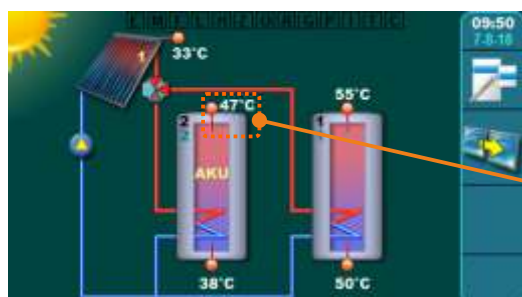
Factory settings		min./max.	unit
THcoll-tank	2	1 / 10	°C

**8.3.x.4. Sensor tank 2 upper**

Sensor tank 2 is used:

- stop of the collector pump when set maximum temperature in the tank is reached,
- protection function of tank cooling through the collector,
- **Mixing/heating function,**
- Holiday option.

In this menu sensor address and type must be set.



example: configurated 2 tank (both with 2 sensors), 1 vacuum tube collector, zone 3-way valve

8.3.x.4.1. Sensor upper

It is necessary to set (choose) address (input) of the connected sensor upper 2 (it is possible to connect sensor upper (it is possible to connect an one free of 10 addresses, controller recommends input T4).

Factory settings		selection
Sensor upper	Not exist	Not exist/T1/.../T10

8.3.3.4.2. Sensor type

If NTC sensor is installed, here must be changed from PT1000 to the NTC.

Factory settings		selection
Sensor type	PT1000	PT1000/NTC

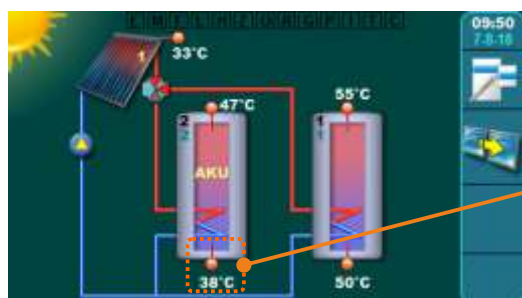


8.3.x.5. Sensor tank 2 lower

Sensor tank 2 lower is used:

- work of the collector pump.
- in case that back flow sensor isn't installed, for energy measurement (measurement is less precise than with back flow sensor).
- in case that sensor tank 2 upper isn't installed, it takes over its functions
- at function of Collector cooling through the tank,
- at Collector antifreeze function,
- at Holiday option.

In this menu sensor address and type must be set.



installed and set sensor tank 2 lower

example: configurate 2 tank (both with 2 sensors), 1 vacuum tube collector, zone 3-way valve

8.3.3.5.1. Sensor lower

It is necessary to set (choose) address (input) of the connected sensor tank 2 lower (it is possible to connect sensor upper (it is possible to connect an one free of 10 addresses, controller recommends input T5).

Factory settings		selection
Sensor lower	Not exist	Not exist/T1/.../T10

8.3.x.5.2. Sensor type

If NTC sensor is installed, here must be changed from PT1000 to the NTC.

Factory settings		selection
Sensor type	PT1000	PT1000/NTC

8.3.x. Tank 3

In case Tank 3 is set as DHW or BUF or BUF with DHW, menus must be set in the same way like for Tank 2 - see menus under 8.3.2. Tank 2.

8.3.x. Tank 4

In case Tank 4 is set as DHW or BUF or BUF with DHW, menus must be set in the same way like for Tank 2 - see menus under 8.3.x. Tank 2.



EXAMPLE - Configuration of TANKS as SWIMMING POOL

If Tank 1, 2 or 3 is set as **POOL**, menus must be set the same like for Tank 3 in the description below.
(example: Pool set as tank 3).

IMPORTANT: in the pool must be installed and set only Sensor tank upper!

NOTE: pool sensor **ALWAYS** must be **NTC5K** because of the much better precision in temperature reading (reading to 1 decimal place) than PT1000.



8.3.x.1 T MAX tank 3

Setting the maximum temperature of the tank 3.

Solar collectors heats tank 3 to the temp. [T MAX tank 3] after which stops heating of this tank.

If the collector cooling function is enabled and active, temperature in the tank can reach up to max. 90°C

NOTE: Pool must be always set as the LAST tank!

Factory settings		min./max.	unit
T MAX tank 3	28	15 / 40	°C

8.3.x.2. TDcoll-tank (difference)

Setting the desired difference between temperature of the collector and temperature of the tank (pool - upper sensor) for start of the collector pump.

START coll. pump -> [Tcollector > **TDcoll-tank** + THcoll-tank]

STOP coll. pump -> [Tcollector < **TDcoll-tank**].

Factory settings		min./max.	unit
TDcoll-tank	4	1 / 10	°C

8.3.x.3. THcoll-tank (hysteresis)

Setting the desired hysteresis temperature between collectors and the tank (pool - upper sensor) for start of the collector pump.

START coll pump -> [Tcollector > TDcoll-tank + **THcoll-tank**]

STOP coll. pump -> [Tcollector < TDcoll-tank].

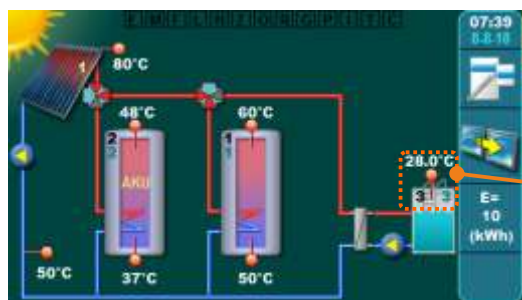
Factory settings		min./max.	unit
THcoll-tank	2	1 / 10	°C

8.3.x.4. Sensor tank 3 upper

Sensor tank 3 upper (pool) is used:

- work of the collector pump including the stop of the collector pump when in the tank (pool) set maximum temp. is reached,
- in case that back flow sensor isn't installed, for energy measurement (measurement is less precise than with back flow sensor).
- at function of Collector cooling through tank,
- at Collector antifreeze function,
- in protection function of the tank cooling through the collector
- at Holiday option.

In this menu sensor address and type must be set.



installed and set sensor tank 3 up

example: configured 3 tank (2 with 2 sensors, 3. tank = pool), 1 vacuum tube collector, back flow sensor, zone 3-way valve

8.3.x.4.1. Sensor upper

It is necessary to set (choose) address (input) of the connected sensor upper 3 (it is possible to connect sensor upper (it is possible to connect an one free of 10 addresses, controller recommends input T6).

Factory settings		selection
Sensor upper	Not exist	Not exist/T1/.../T10

8.3.x.4.2. Sensor type

Because of the much better precision in temperature reading (reading to 1 decimal place) pool sensor **ALWAYS** must be **NTC5K** (not in the delivery).

If NTC sensor is installed, here must be changed from PT1000 to the NTC.

Factory settings		selection
Sensor type	PT1000	PT1000/NTC



example: set 3 tanks

8.3.x. Enabled tanks

In this menu tanks can be enabled/disabled in the work of the system.

ENABLED - tank is enabled (included) in work of the system

DISABLED - tank is disabled (removed) from the work of the system (to this tank pumps, valves and additional heating doesn't work).

Factory settings		selection
Tank 1	Enabled	Enabled/Disabled
Tank 2	Enabled	Enabled/Disabled
Tank 3	Enabled	Enabled/Disabled
Tank 4	Enabled	Enabled/Disabled



example: set 3 tanks

8.3.x. Tank priority

Setting the priority for the solar filling of the tanks. Tank 1 always must be first in priority, other can be rotated according the filling priority. Priority of each tank is marked on the upper left corner of the tank (green number), below tank order number (black number).

Factory settings		selection
2 tanks	12	12
3 tanks	123	123 / 132
4 tanks	1234	1234/1243/1324/1342/1423/1432



8.3.x. Priority test

If there is more than 1 tank in the configuration, priority test can be enabled to periodically test the collector temperature if it has enough high temperature to start filling the priority tank again.

After priority tank is filled (or $[T_{MAX} \text{ tank1}]$ or $[T_{coll.} < T_{tank1} + T_{Dcoll-tank1}]$), solar heating is switched to the next tank according the priority. By enabling Priority test function, next tank by priority will be filled for some time (set under Priority filling) after which it will stop for some time (set under Priority pause) to check if the collectors can fill priority tank or they will continue to fill current tank. If the collector temperature increase in the set pause time is higher or equal $[3^{\circ}\text{C}/\text{x min.}]$ pause time is extended until increase of the collector temp. is higher ie. until is possible to fill priority tank again. If the increase of the collector temp. in set time is lower than $[3^{\circ}\text{C}/\text{x min.}]$ filling the current tank continues.

By enabling Priority test function in menu 1. Tank, menus Priority filling and Priority pause are shown.

Factory settings		selection
Priority test	OFF	OFF/ON

8.3.8. Priority filling

Priority test -> ON

Time for continuous filling of the next tank (not priority tank).

Factory settings		min./max.	unit.
Filling priority	15	0 / 720	min

8.3.9. Priority pause

Priority test -> ON

Pause time for the collector pump in which is tested rise of the collector temperature to switch back to heat priority tank.

If the temperature rise in the set pause time is higher or equal $[3^{\circ}\text{C}/\text{x min.}]$, time of the pause is extended for next interval, in which rise of the collector temperature is tested and possibility to start to heat priority tank. If the temperature rise in set pause time is less than $[3^{\circ}\text{C}/\text{x min.}]$, current tank continues to be filled.

Factory settings		min./max.	unit.
Priority pause	3	0 / 60	min



8.3.x. Tank cooling

Tank cooling ie. decrease the water temperature in the tanks to prepare them to accept new solar energy next day can be done through collectors or through recirculation (if it's installed into the system and connected to the controller).

NOTE: tank cooling always starts from the tank with the lowest priority to the tank with highest priority.

Through collector - cooling the tank through the collector (and pipes to the collector)



NOTE: it's recommended that cooling is done **through flat collectors** (not vacuum tube collectors) due to lower insulation of the flat plate collectors.

Tank cooling is done when collector temperature is lower than temperature in tank lower $[T_{coll} + dT_{coll}/tank < T_{MAX\ tank\ X}]$.

Tank cooling start only when all tanks are filled to the $[T_{MAX\ tank}]$ and start from lowest priority tank.

Tank cooling stops when temperature of the upper tank sensor is lower than the difference collector/tank $[T_{tank_up} < T_{MAX\ tank} - dT_{coll}/tank]$.

Through recirculation - cooling of the first tank through recirculation (cooling only first, priority tank, only if recirculation is connected).

Tank cooling starts only when all tanks are filled to the $[T_{MAX\ tank}]$ and when $[T_{tank\ 1_up} > T_{MAX\ tank\ 1}]$ (only in first tank).

First tank cooling stops when temperature of the upper sensor falls for 5°C from $[T_{MAX\ tank\ 1}]$.

$[T_{tank\ 1_up} < T_{MAX\ tank\ 1} - 5^{\circ}\text{C}]$.

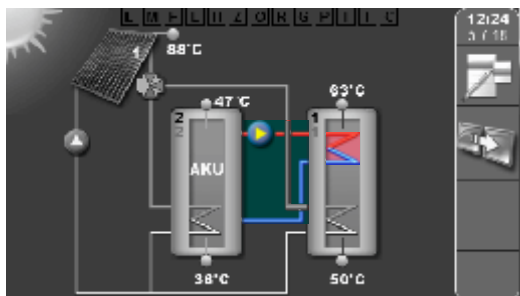
Factory settings		selection
Tank cooling	Disabled	Disabled/Through coll./Recirculation



8.3.x. Mixing-heating

When temperature of the first (priority) tank (upper sensor) is lower for min. set difference than second tank (upper sensor) mixing-heating pump starts to heat first tank. This function is mostly used when first tank is DHW and second is BUF, when excess of energy (solar) is stored in the BUF tank during the day so in the evening, after DHW consumption, the DHW tank can additionally be heated with energy from BUF, without using conventional heating source.

In this menu is possible to enable/disable function of additional heating of the first tank with the second tank and set the difference between first two tanks.



example: configured 2 tanks,
hid. connection: - Zone 3-way valve,
Mixing/heating

8.3.x.1. Mixing-heating

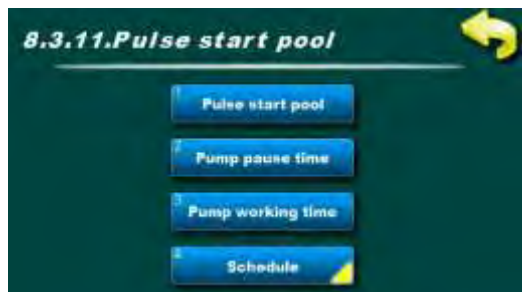
In this menu mixing-heating function can be enabled or disabled.

Factory settings		selection
Mixing-heating	OFF	OFF/ON

8.3.x.2. TDif Tank2->Tank1 (difference)

Setting the temperature difference between second and first tank (upper sensors) for start and stop of the mixing/heating pump.

Factory settings		min./max.	unit
Tdif Tank2->Tank1	4	1 / 10	°C

**8.3.x. Pulse start pool**

This menu is shown only if pool is set in the configuration.

In this menu are additional menus for setting the pulse start of the pool pump (kick).

If pool sensor can't be installed into place where it can read correct temperature, it's recommended to enable pulse start of the pump (when pump is still) which occasionally starts the pump for set time, to read correct temperature of the pool sensor.

NOTE: to often and to long work of the pool pump power supply consumption can be increased and pool can be cooled! Work and pause time of the pool pump depends of the location of the pool sensor.

8.3.x.1. Pulse start pool

In this menu pulse start of the pool can be enabled or disabled. All set times and schedule are valid.

Factory settings		setting
Pulse start pool	OFF	OFF/ON

8.3.x.2. Pump pause time

Setting the pause time of the pool pump in pulse start.

NOTE: Time must be set according to the position of the pool sensor to have correct pool temperature and start with the pool heating as soon as possible.

Factory settings		min./max.	unit
Pump pause time	15	0 / 1440	min

8.3.x.3. Pump working time

Setting the working time of the pump in pulse start.

NOTE: Time must be set according to the position of the pool sensor to have correct pool temperature and start with the pool heating as soon as possible.

Factory settings		min./max.	unit
Pump working time	60	0 / 3600	sec

**8.3.12.4. Schedule**

In this menu are additional menus for setting the schedule for pulse start (kick) of the pool pump.

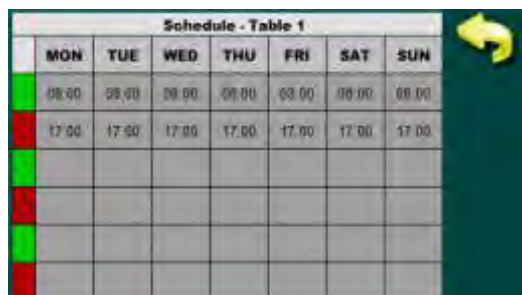
Schedule can be switch off or one of two tables with adjusted on/off intervals can be set.

8.3.x.4.1.Schedule

In this menu Schedule can be enabled/disabled and set one of two tables according to which pool pump Pulse start will work.

NOTE: If Pulse start is on and Schedule is off, pulse start will work all the time (24/7) according the work/pause time. In this case, power supply consumption can be increased (pool pump) and pool cooling can occur.

Factory settings		selection
Schedule	Table 1	OFF/Table 1/Table 2



	MON	TUE	WED	THU	FRI	SAT	SUN
08:00	08:00	08:00	08:00	08:00	08:00	08:00	08:00
17:00	17:00	17:00	17:00	17:00	17:00	17:00	17:00

8.3.x.4.2.Table 1

In this menu 3 time intervals (3 starts (green fields) and 3 stops (red fields)) can be set for each day of the week according to pool pump will work in pulse start.

Factory setting: pulse start is active from 08:00 h to 17:00 h every day of the week. From 17:00 h of the first day to 08:00 h next day pulse start doesn't work.

Factory settings		selection
Table 1	08:00-17:00	mon/tue/wed/thu/fri/sat/sun

8.3.x.4.3.Table 2

In this menu 3 time intervals (3 starts (green fields) and 3 stops (red fields)) can be set for each day of the week according to pool pump will work in pulse start.

Factory setting: pulse start is active from 08:00 h to 17:00 h every day of the week. From 17:00 h of the first day to 08:00 h next day pulse start doesn't work.

Factory settings		selection
Table 2	08:00-17:00	mon/tue/wed/thu/fri/sat/sun

8.x. DHW heating



example: configured 1 electric heater and 2 conventional heating sources

8.x. DHW heating

In this menu are additional menus for setting the heating with the conventional heating sources connected to tank 1.

8.x.x. Electric heater

In this menu are additional menus for setting the heating with the electric heater.

8.x.x.1. Electric heater

In this menu electric heater can be switch ON or OFF

Factory settings		selection
Electric heater	OFF	OFF/ON

8.x.x. Boiler 1

In this menu are additional settings for heating with conventional source 1.

8.x.x.1. Boiler 1

In this menu for heating with conventional heating source 1 can be enabled or disabled (ie. work of pump between conventional heat source and tank 1).

Factory settings		selection
Boiler 1	OFF	OFF/ON

8.x.x.2. T MAX Boiler 1

Setting of the maximum temperature of the conventional heating source 1. If the temperature in conventional heating source is higher than set, pump to the tank will not start.

Factory settings		min./max.	unit
T MAX Boiler 1	90	30 / 90	°C

8.4.2.3. TD boiler1-tank1 (difference)

Setting of the temperature difference between conventional heating source 1 and first tank (upper sensor) for start and stop of the pump between boiler 1 and tank 1. Some of the conditions:

pump start: $[T_{boiler1} \Rightarrow T_{tank1} + TD_{boiler1-tank} + 5]$

pump stop: $[T_{boiler1} \leq T_{tank1} + TD_{boiler1-tank}]$

Factory settings		min./max.	unit
TD boiler1-tank	10	3 / 20	°C

8.x.x.4. TH boiler1-tank1 (hysteresis)

Setting the temperature hysteresis between conventional heating source 1 and first tank (upper sensor) for start of the pump between boiler 1 and tank 1. Some of the conditions:

pump start: $[T_{tank1 upper} < TD_{HW} - TH_{boiler1-tank} - T_{lowering temperature}]$

Factory settings		min./max.	unit
TH boiler1-tank	10	3 / 20	°C

8.4.2.5. T enable boiler 1

Setting the minimum temperature of the conventional heating source for starting the pump between conventional heating source 1 and tank 1 (normally needed when condensation of the boiler needs to be prevented.)

Factory setting		min./max.	Val.
T enable boiler 1	60	0 / 90	°C

**8.4.2.6.Schedule**

In this menu are additional menus for setting the schedule for working of the conventional heating source 1.

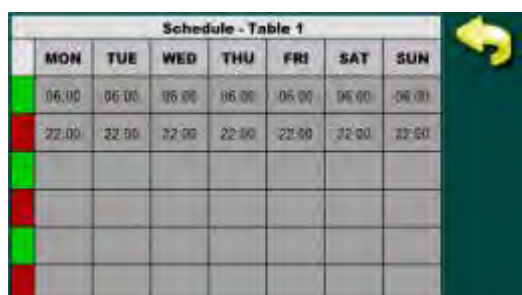
NOTE: In case schedule is not set, conventional heating source pump will work according set temperatures always, 24/7. Recommendation is to set schedule according to the real need for DHW to optimize fuel consumption.

8.4.2.6.1.Schedule

In this menu schedule can be enabled/disabled and one of two tables can be selected according to which heating with conventional heating source will work.

NOTE: If the conventional heating source is enabled and schedule is disabled, tank heating with conventional heating source will be active always, 24/7, according the set temperatures.

Factory setting		setting
Schedule	OFF	OFF/Table 1/ Table 2

**8.4.2.6.2.Table 1**

In this menu 3 time intervals can be set (3 starts ((green fields) and 3 stops (red fields) for each day of the week in which heating with conventional heating source will work according the set temperatures.

Factory setting: conventional heating source is enabled from 06:00 h to 22:00 h every day of the week. From 22:00 h of the first day to 06:00 h next day heating with conventional heating source is disabled.

Factory setting		setting
Table 1	06:00-22:00	mon/tue/wed/thu/fri/sat/sun

8.4.2.6.3.Table 2

In this menu 3 time intervals can be set (3 starts ((green fields) and 3 stops (red fields) for each day of the week in which heating with conventional heating source will work according the set temperatures.

Factory setting: conventional heating source is enabled from 06:00 h to 22:00 h every day of the week. From 22:00 h of the first day to 06:00 h next day heating with conventional heating source is disabled.

Factory setting		setting
Table 2	06:00-22:00	mon/tue/wed/thu/fri/sat/sun

8.4.2.7. Sensor address

It's necessary to select address of the connected sensor of the conventional heating source 1 (possible to connect to one of 10 free address, regulation automatically recommends input according the set configuration).

Factory setting		setting
Sensor address	Not exist	Not exist/T1/.../T10

8.x.x.8. Sensor type

If NTC sensor is installed, here it must be changed from PT1000 to NTC type.

Factory settings		selection
Sensor type	PT1000	PT1000/NTC

8.x.x. Boiler 2

Menus for conventional heating source 2 settings. All menus are similar to menus for conventional heating source 1 and will not be separately explained here (for details, see 8.4.2. Boiler 1).

**8.x.x. Heating delay**

For this menu to appear, minimum one of the conventional heating source must be set.

If the function is enabled and collector pump is active (tank is filled with solar energy) this function lowers the temperature of activation of the conventional heating source function (delays start of the conventional heating source function) by value that is set under Lowering temperature menu.

If collector pump is active, delay start of the heating:

$[T_{\text{tank_upper1}} \leq \text{TDHW} - dT_{\text{boiler_tank}} - \text{Lowering temperature}]$.

If collector pump isn't active a tank needs to be heated, delay isn't considered:

$[T_{\text{tank_upper1}} \leq \text{TDHW} - dT_{\text{boiler_tank}}]$.

8.x.x.1. Heating delay

In this menu heating delay can be enabled or disabled.

Factory settings		selection
Heating delay	OFF	OFF/ON

8.x.x.2. Lowering temperature

Setting the temperature for which start of the heating with conventional heating source will be delayed when collector pump is working.

Factory settings		min./max.	unit.
Lowering temperature	0	0 / 90	°C

8.5. RECIRCULATION**8.x. Recirculation**

In this menu are additional menus for setting the recirculation of DHW.

In this menus work and pause time of the DHW recirculation pump can be set and also set the time interval when work and pause will be active.

8.x.1. Recirculation

In this menu recirculation function can be enabled or disabled. All set times and schedules remains valid.

Factory settings		unit.
Recirculation	OFF	OFF/ON

8.x.2. Pump working time

Setting the recirculation pump working time when recirculation is active.

NOTE: Time must be set according the recirculation system. Recommendation is to set the working time as short as possible to minimize cooling down the tank.

Factory settings		min./max.	unit
Pump working time	5	1 / 1440	min

8.x.3. Pump pause time

Setting the recirculation pump pause time when circulation is active.

NOTE: Time must be set according the recirculation system. Recommendation is to set the pause time as long as possible to minimize cooling down the tank.

Factory settings		min./max.	unit
Pump pause time	15	0 / 1440	min

**8.x.4. Schedule**

In this menu are additional menus for set the recirculation schedule.

Schedule can be enabled/disabled or select one of the two tables with set time intervals for enabled and disabled function.

8.x.4.1. Schedule

In this menu schedule can be enabled/disabled and selected one of two tables according to which DHW recirculation will work.

NOTE: In case recirculation is enabled and shedule is disabled, recirculation will always work according set times, 24/7, ie. recirculation pump will work when is not needed and will cool down DHW tank and increase fuel consumption of the conventional heating source.

Factory settings		selection
Schedule	OFF	OFF/Table 1/Table 2

Schedule - Table 1							
	MON	TUE	WED	THU	FRI	SAT	SUN
Start	06:00	06:00	06:00	06:00	06:00	06:00	06:00
Stop	22:00	22:00	22:00	22:00	22:00	22:00	22:00

8.x.4.2. Table 1

In this menu 3 time intervals can be set (3 start (green fields) and 3 stop (red fields)) for each day of the week in which recirculation pump will work according the set work/pause times.

Factory setting: recirculation is enabled from 06:00 h to 22:00 h every day of the week. From 22:00 h of the first day to the 06:00 next day recirculation is disabled.

Factory settings		selection
Table 1	06:00-22:00	mon/tue/wed/thu/fri/sat/sun

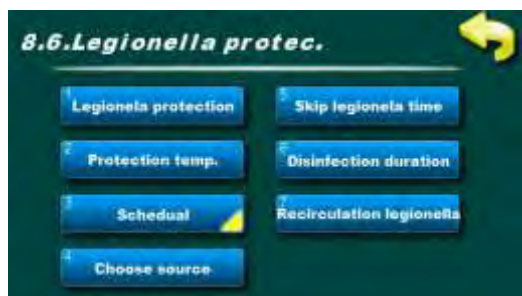
8.x.4.3. Table 2

In this menu 3 time intervals can be set (3 start (green fields) and 3 stop (red fields)) for each day of the week in which recirculation pump will work according the set work/pause times.

Factory setting: recirculation is enabled from 06:00 h to 22:00 h every day of the week. From 22:00 h of the first day to the 06:00 next day recirculation is disabled.

Factory settings		selection
Table 2	06:00-22:00	mon/tue/wed/thu/fri/sat/sun

8.x. LEGIONELLA PROTECTION



8.x. Legionella protection

In this menu are additional menus for setting the tank disinfection ie. legionella protection.

8.x.1. Legionella protection

In this menu legionella protection function can be enabled or disabled. All set times, schedule and temperatures are remaining as they were set.

Factory settings		selection
Legionella protection	OFF	OFF/ON



8.x.2. Protection temperature

Legionella bacteria lives and develops in places with poor or without circulation in water temperature between 20°C and 55°C. In higher temperature bacteria is slowly dying and over 70°C dies instantly. For efficient protection from the bacteria, temperature in tanks and pipelines must be for some time over 65°C for efficient disinfection. Set protection temperature is measures upper tank 1 sensor.

Factory settings		min./max.	unit
Protection temp.	70	60 / 90	°C

8.x.3. Schedule

In this menu are additional menus for setting the schedule for legionella protection.

Schedule can be disabled or select one of the two tables with set time intervals for enabled and disabled function.

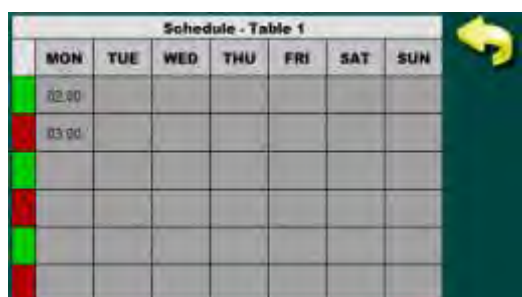
8.x.3.1. Schedule

In this menu schedule can be enabled/disabled and select one of two tables according to which Legionella protection will work.

NOTE: in case Schedule is disabled Legionella protection will NOT work until one of two tables with set time intervals is selected.

If DHW tank has larger volume or conventional heating source is weak, depending of the tank heating speed, it's necessary to adjust legionella protection time.

Factory settings		selection
Schedule	Table 1	OFF/Table 1/Table 2



8.x.3.2. Table 1

In this menu 3 time intervals can be set (3 starts (green fields) and 3 stops (3 red fields)) for each day of the week when Legionella protection will work.

Factory setting: Legionella protection is active one day of the week (Monday) from 02:00 to 03:00 h.

Factory settings		selection
Table 1	02:00-03:00	mon

8.x.3.3. Table 2

In this menu 3 time intervals can be set (3 starts (green fields) and 3 stops (3 red fields)) for each day of the week when Legionella protection will work.

Factory setting: Legionella protection is active one day of the week (Monday) from 02:00 to 03:00 h.

Factory settings		selection
Table 2	02:00-03:00	mon



example: configured 3 conventional sources

8.x.4. Choose source

In this menu conventional heating source for tank disinfection according the schedule and temperature must be set. Selected heating source must be able to achieve set temperature in set schedule time (in menu are displayed only set conventional heating sources).

Factory settings		selection
Choose source	El. heater	El. heater/Boiler 1/Boiler 2

8.x.5. Skip legionella time

In this menu Skip legionella time function can be enabled or disabled.

In case function is enabled and in time interval between two legionella protection activation, temperature and time of the protection function is reached, next interval for protection is skipped and next time interval is scheduled.

Factory settings		selection
Skip legionella time	OFF	OFF/ON

**8.x.6. Disinfection time**

Setting the duration of water temperature that must be above set Protection temp. to have succesfull disinfection.

Factory settings		min./max.	unit
Disinfection duration	15	1 / 1440	min

8.x.7. Recirculation legionella

In this menu DHW recirculation can be enabled/disabled when Legionella protection function is active to disinfect pipeline (circulation must be set in the system).

When conventional heating source is started, recirculation pump is also started and works until disinfection is finished.

NOTE: recirculation must be set and enabled in the installation menu.

Factory settings		selection
Recirculation leg.	OFF	OFF/ON

8.x. ENERGY MEASURING



example: configured 2 collector fields, flowmeter

8.x. Energy measuring

In this menu are additional menus for setting the energy measuring functions.

Energy is calculated according to temperatures from collector sensor, return flow sensor and written or measured current flow of glycol in the solar system.

If return flow temperature sensor isn't installed, for energy calculation is used with temperature of lower sensor of the currently active tank.

NOTE: energy measurement without return flow sensor installed and without flowmeter will be less accurate than with them.

NOTE: input of gained solar energy and statistic is on the controller screen is done by intervals of 1 kWh! Interval of drawing gained solar energy in the graphical view of the statistic depend of the amount installed collectors ie. flow through collectors.



8.x.x. Flowmeter

In this menu are additional menus for setting the characteristic of the flowmeter.

NOTE: energy measuring with installed flowmeter is more accurate than manual input of the flow because always is used correct flow for the calculation (important with modulating pumps).

8.x.x.1. Flow meter

In this menu flowmeter can be enabled or disabled.

All set values remain like were set before.

Factory settings		selection
Flowmeter	OFF	OFF/ON

8.x.x.2. Flowmeter constant

Setting of the measuring unit of flowmeter.

Factory settings		selection
Flowmeter constant	ml/impuls	ml/imp. / l/imp.

8.x.x.3. Volume/impuls

Input of the measured volume per impulse which provides flowmeter.

Factory settings	min./max.	unit
Volume per impuls	1	l / 65000 -

8.x.x.4. Flowmeter sensor address

Setting the address of input where flowmeter is connected (one free address of 10 possible).

Factory settings		selection
Flowmeter sen. add.	Not exist	Not exist/T1/.../T10

8.x.x. Collector 1 flow

In case flowmeter isn't installed, precise flow through collector field 1 must be entered.

NOTE: Solar pump must work at 100% power on set flow (flow regulator) and flow must be precisely read from the flowmeter (on pump group) and entered into controller.

In case that flow isn't correct, controller will wrongly measure gained solar energy!

Factory settings		min./max.	unit
Collector 1 flow	1.00	0.01/60.00	l/min

8.x.x. Collector 2 flow

In case flowmeter isn't installed, precise flow through collector field 2 must be entered.

NOTE: Solar pump must work at 100% power on set flow (flow regulator) and flow must be precisely read from the flowmeter (on pump group) and entered into controller.

In case that flow isn't correct, controller will wrongly measure gained solar energy!

Factory settings		min./max.	unit
Collector 2 flow	1.00	0.01/60.00	l/min

8.x.x. Glycol type

In this menu used glycol type must be set for correct calculation of gained solar energy.

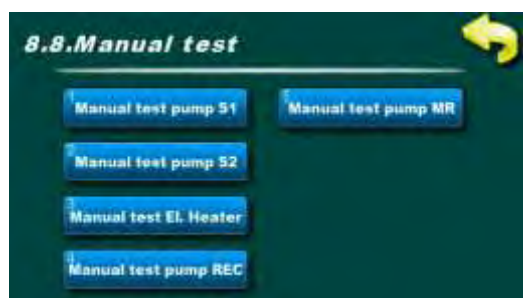
Factory settings		setting
Glycol type	Propylene gly.	Ethylene gly./Propylene gly.

8.x.x. Mixing

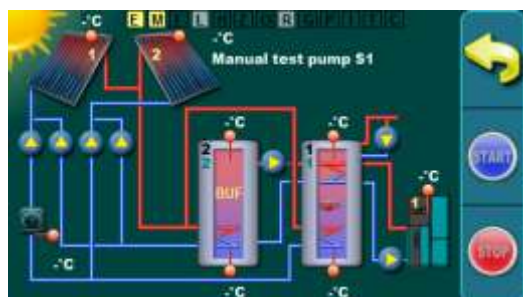
In this menu percentage of glycol in mixing of water and glycol in solar system must be precisely set for best calculation of gained solar energy.

Factory settings		min./max.	unit
Mixing	40	10 / 70	%

8.x. MANUAL TEST



example: configured 2 tanks with pumps,
1 conventional heating source,
1 electric heater, recirculation pump
and mixing pump



1 kol.polje / cijevni kol. / 1 sprem. PTV / 1 AKU
spremnik / pumpe / električni grijač / kotao1 /
miješanje/dogrijavanje / mjerač protoka /
osjetnik povratnog voda / recirkulacija

8.x. Manual test

Depending of set components and their outputs, in manual test all enabled outputs can be tested.

NOTE: number and type of menus depends of enabled outputs in installation menu.

8.x.x. Manual test pump S1

Pressing the START button output is enabled (in this case tank 1 pump), and by pressing the STOP button, output is disabled (in this case tank 1 pump). With button BACK previous screen is displayed.

When Manual test is on, mark for the Manual test function (M) is yellow.

Depending on the selected output, with buttons START and STOP outputs are manually enabled or disabled.

8.x. SAVE/LOAD

8.x. Save/Load

In this menu are additional menus for saving and loading changed parameters and resetting to the factory setting.



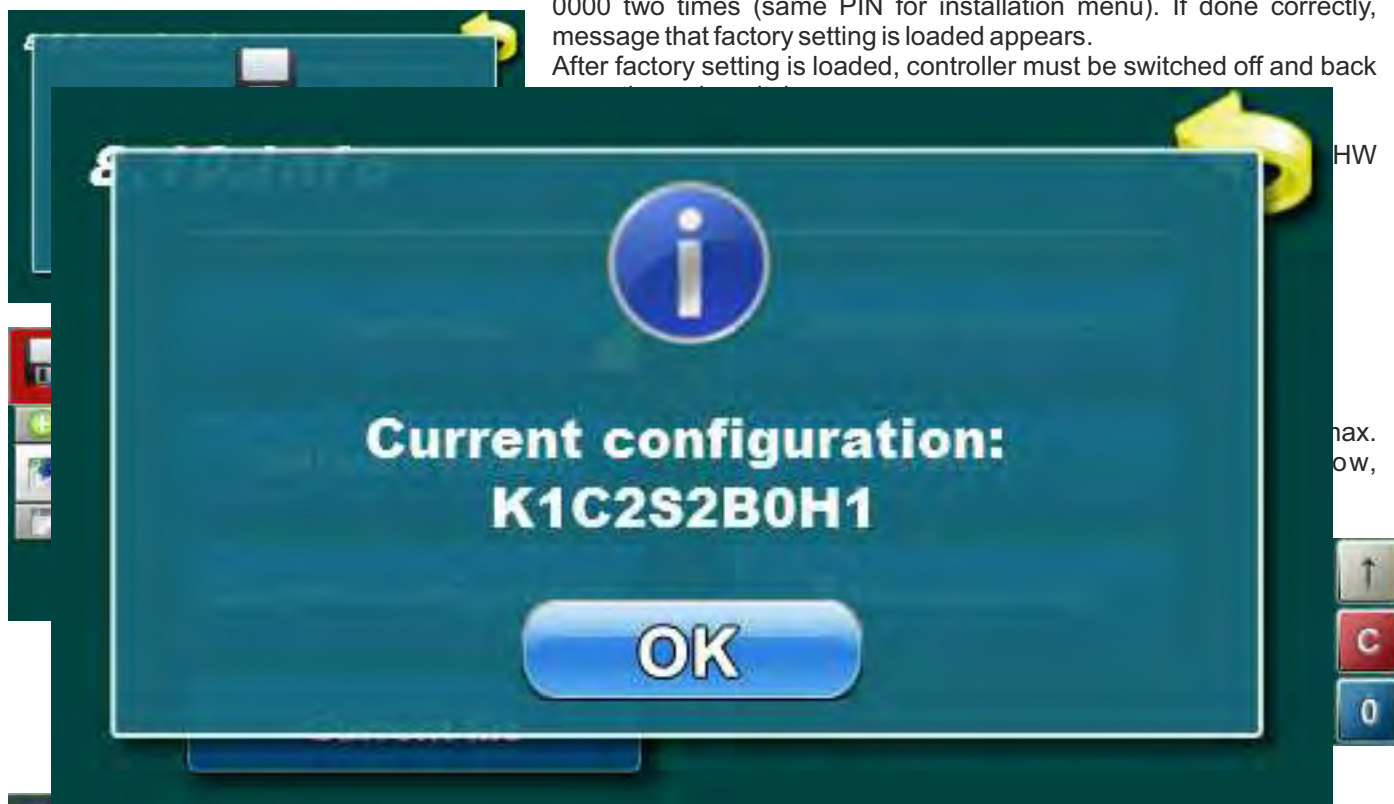
8.x.1. Factory setting

Reset all parameters to the factory setting. After reset to factory setting previously saved files remains (user and advanced) and they can be loaded after reset. Also, statistic remains as before reset to factory setting.

After pressing the factory setting, current setting can (but don't have to) be saved in new or already saved file (saving is done into service save file).

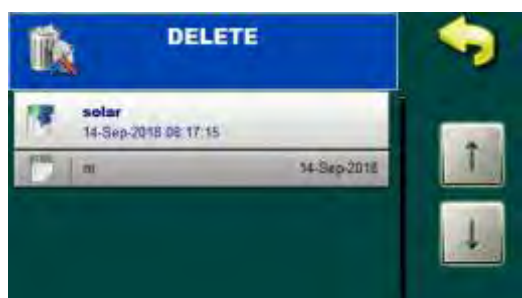
After this, loading of factory setting must be confirmed by entering PIN 0000 two times (same PIN for installation menu). If done correctly, message that factory setting is loaded appears.

After factory setting is loaded, controller must be switched off and back



8.x.2. Load

Load previously saved service files (settings).



8.x.4. DELETE

Delete previously saved files. Currently active files can't be deleted (files that have pushpin symbol on the icon).

Service files can be deleted only in installation menu (under PIN).

8.x. INFO



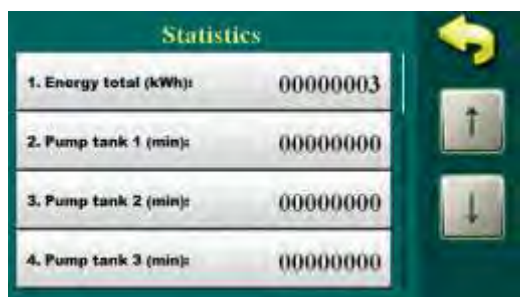
8.x. Info

In this menu are additional menus for informations regarding system and software.



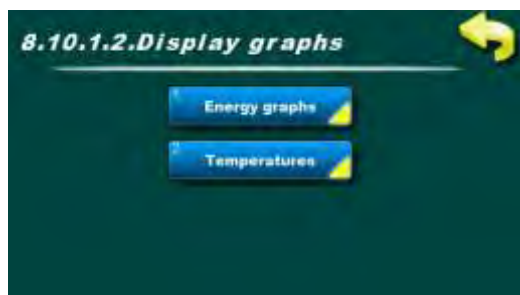
8.x.1. Statistics

In this menu are additional menus regarding statistic data of solar system.



8.x.1.1. Display numbers

View of the statistics for working of each individual output (in minutes of work) and total energy gained (in kWh/MWh).



8.x.1.2. Display graphs

In this menu are additional menus for graphical view of the statistic data: received energy graphs and temperatures graph (24 and 48 h).



8.x.1.2.1. Energy graphs

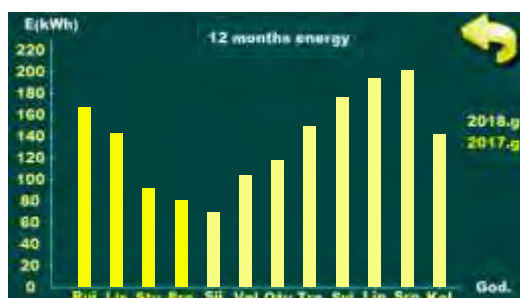
In this menu are additional menus for graphical view of received energy. If columns doesn't fit in the graph screen, graph area can be increased or decreased with multiplier. Received energy can be viewed by months in period of one year.

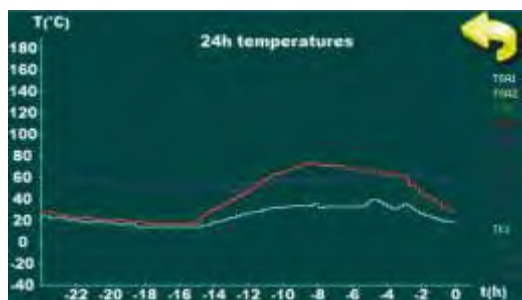
8.x.1.2.1.1. Multiplier

If columns of received energy doesn't fit to the graph screen, graph area can be increased or decreased (x1, x2, x3, x5, x10) (multiplication of axis by energy) with the multiplier.

8.x.1.2.1.2. 12 month energy

As solar energy is received, a current month graph it's automatically drawn. On this view is always possible to see received energy for period of one year by intervals of one month.





8.x.1.2.2. Temperatures

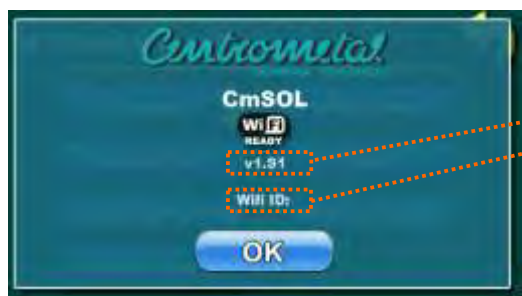
In this menu are additional menus for graphic view of the temperatures from installed sensors.

8.x.1.2.2.1. 24h temperatures

Diagram of temperatures of configured sensors in 24 h.

8.x.1.2.2.2. 48h temperatures

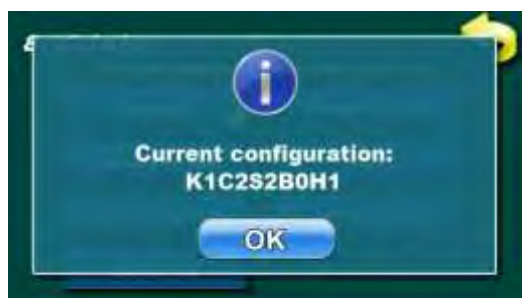
Diagram of temperatures from configured sensors in 48 h.



8.x.2. Software version

In this menu are software version of controller and WiFi ID of the Cm WiFi-box:

- current software version of the regulation
- if connected, WiFi ID of the Cm WiFi-box

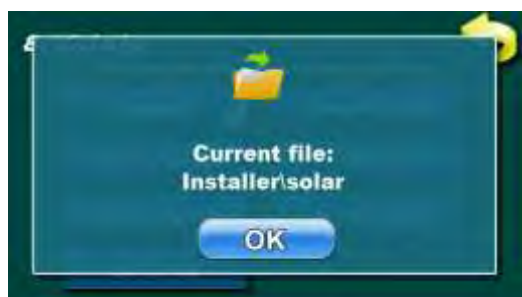


8.x.3. Current configuration

In this menu current system configuration is displayed.

1. K x - number of boilers (0, 1, 2)
2. C x - number of collector fields (1, 2)
3. S x - number of tanks (1, 2, 3, 4)
4. B x - number of pools (0, 1)
5. H x - hydraulic connection (1 (Pump), 2 (Zone valve 2-way), 3 (Zone valve 3-way))

example: configured: 1 boiler, 1 collector field, 2 tanks, 1 pool, hydraulic connection zone 3-way valve



8.x.4. Current file

In this menu current selected file is displayed. Controller is working according to this file. Selected and active can be or configuration saved by serviceman (under PIN) or configuration saved by user.



8.x.5. Change of glycol

Depending of the work of solar system and glycol manufacturer recommendation, glycol in the solar system must be replaced regularly (often overheating of the glycol (steam in the collectors) results with faster glycol aging and it's getting thicker, which results with lower collector efficiency and in the end it can result with clogging of the collector). **Recommendation is to replace the glycol every 2 years.**

After glycol replacing in the solar system, counter in the menu -> 8.12.2. Reset glycol counter must be reset, which restarts time interval of 2 years, after which warning for glycol replacement is displayed.

NOTE: Warning for glycol replacement appears after 2 years from last counter reset. When warning appears solar system works normally, only warning is active until of the counter is reset.

Glycole counter reset menu is under installation menu -> 8.12.2. Reset glycole counter



8.x.6. History

In this menu are informations regarding history of errors, warnings and informations in chronological order of occurrence (in user menu errors are separated from warnings).

With mark of error/warning/information displayed is it's full name, date and time of occurrence and error code.

By pressing the error/warning/information area detailed description is displayed with possible correction solution.

After 50. input, oldest input is deleted when new occurs.

History of the errors/warnings/informations can't be deleted.



8.x.7. Entrance log

In this menu log of entry to the installation menu (under PIN) is displayed (date and time).

8.x. INTERNET SUPERVISION



8.x. Internet supervision

Controller automatically recognizes when Cm WiFi-box module is connected and in user and installation menus (under PIN) is new menu for Internet supervision displayed.

In this menu internet supervision or supervision+control through WiFi network can be enabled/disabled, WiFi network name and password can be entered, time synchronisation can be enabled/disabled, time zone can be set and manual connection reset can be done.

User can install and commission set Cm WiFi-box by himself.

8.x.1. WiFi module commission

In this menu Cm WiFi-box module can be enabled or disabled.

Factory settings		selection
WiFi module	OFF	OFF/ON



8.x.2. Internet supervision

In this menu internet supervision can be enabled/disabled and select Internet supervision (without possibility to change parameters) or select Internet supervision+control (parameters can be changed).

Factory settings		selection
Internet supervision	Sup.+control	OFF/Sup./Sup.+control



8.x.3. WiFi network name

In this menu WiFi network name to which Cm WiFi-box will connect must be entered. Possible is to enter 31 character, with upper and lower case, numbers and symbols.

NOTE: Insert correct network name, with paying attention to the upper and lower case, numbers and symbols.

8.x.4. WiFi password

In this menu WiFi password at the network to which Cm WiFi-box will connect must be entered. Possible is to enter 31 characters, with upper and lower case, numbers and symbols.

NOTE: Insert correct network password, with paying attention to the upper and lower case, numbers and symbols.

8.x.5. Time synchronisation

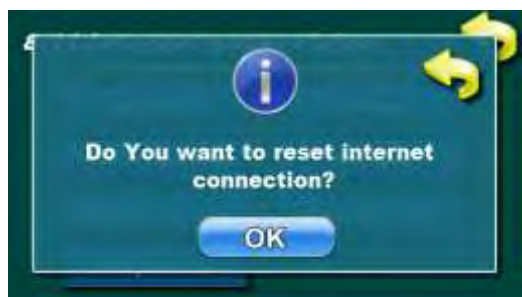
In this menu controller time synchronisation with server time can be enabled/disabled.

Factory settings		selection
Time sync.	ON	OFF/ON

8.x.6. Time zone

In this menu time zone can be set according to controller installation location.

Factory settings		min./max.	unit
Time zone	1h	-12 / 14	h



8.11.7. Connection reset

In this menu internet connection can be manually reset. In case of data sending to web server is blocked, connection can be manually reset.



CM WiFi-box requires active DHCP server of Access Point (e.g. router) because manual setting of network parameters is not possible. For more informations contact administrator of your home network.



For detailed setting of the Cm WiFi-box see technical instructions for Cm WiFi-box received with module.

8.12. RESET COUNTERS



8.12. Reset counters

In this menu are additional menus for gained solar energy counters reset and reset of the glycol counter (glycol replacement).



8.12.1. Reset energy counter

In this menu counter of total gained solar energy from collectors can be reset to 0.



8.12.2. Reset glycol counter

In this menu counter of the solar system glycol replacement interval can be reset to 0.

After reset, counter start to count time of 2 years after which warning (reminder) for glycole replacement is active again.

Counter can be reset without warning appearing on the screen.

When glycole replacement warning appears on the screen, glycole in the solar system must be replaced with new one and reset the counter so after 2 years warning will appear again.

ERRORS LIST

ERROR	NAME	DESCRIPTION
E1	COLLECTOR 1 SENSOR	<p>Possible cause: interruption in el. wires between sensor and controller, contact on the regulation, cold connection or damaged sensor, set wrong sensor type at configuration.</p> <p>Controller status: Collector/tank pump doesn't work.</p> <p>Troubleshooting: Check sensor installation position, check damage / function of the sensor and (silicone) cable, check connection contacts, check sensor type (PT1000 or NTC), if there is available free input set it for this sensor and connect sensor.</p>
E2	COLLECTOR 2 SENSOR	<p>Possible cause: interruption in el. wires between sensor and controller, contact on the regulation, cold connection or damaged sensor, set wrong sensor type at configuration.</p> <p>Controller status: Collector/tank pump doesn't work.</p> <p>Troubleshooting: Check sensor installation position, check damage / function of the sensor and (silicone) cable, check connection contacts, check sensor type (PT1000 or NTC), if there is available free input set it for this sensor and connect sensor.</p>
E3	TANK 1 UPPER SENSOR	<p>Possible cause: interruption in el. wires between sensor and controller, contact on the regulation, cold connection or damaged sensor, set wrong sensor type at configuration.</p> <p>Controller status: Regulation works without tank that has sensor error, electric heater/pump of conventional heating source (boiler) doesn't work.</p> <p>Troubleshooting: Check sensor installation position, check damage / function of the sensor and cable, check connection contacts, check sensor type (PT1000 or NTC), if there is available free input set it for this sensor and connect sensor.</p>
E4	TANK 1 LOWER SENSOR	<p>Possible cause: interruption in el. wires between sensor and controller, contact on the controller, cold connection or damaged sensor, set wrong sensor type at configuration.</p> <p>Controller status: Controller works without tank that has sensor error.</p> <p>Troubleshooting: Check sensor installation position, check damage / function of the sensor and cable, check connection contacts, check sensor type (PT1000 or NTC), if there is available free input set it for this sensor and connect sensor.</p>
E5	TANK 2 UPPER SENSOR	<p>Possible cause: interruption in el. wires between sensor and controller, contact on the controller, cold connection or damaged sensor, set wrong sensor type at configuration.</p> <p>Controller status: Controller works without tank that has sensor error.</p> <p>Troubleshooting: Check sensor installation position, check damage / function of the sensor and cable, check connection contacts, check sensor type (PT1000 or NTC), if there is available free input set it for this sensor and connect sensor.</p>
E6	TANK 2 LOWER SENSOR	<p>Possible cause: interruption in el. wires between sensor and controller, contact on the controller, cold connection or damaged sensor, set wrong sensor type at configuration.</p> <p>Controller status: Controller works without tank that has sensor error.</p> <p>Troubleshooting: Check sensor installation position, check damage / function of the sensor and cable, check connection contacts, check sensor type (PT1000 or NTC), if there is available free input set it for this sensor and connect sensor.</p>

E7	TANK 3 UPPER SENSOR	<p>Possible cause: interruption in el. wires between sensor and controller, contact on the controller, cold connection or damaged sensor, set wrong sensor type at configuration.</p> <p>Controller status: Controller works without tank that has sensor error.</p> <p>Troubleshooting: Check sensor installation position, check damage / function of the sensor and cable, check connection contacts, check sensor type (PT1000 or NTC), if there is available free input set it for this sensor and connect sensor.</p>
E8	TANK 3 LOWER SENSOR	<p>Possible cause: interruption in el. wires between sensor and controller, contact on the controller, cold connection or damaged sensor, set wrong sensor type at configuration.</p> <p>Controller status: Controller works without tank that has sensor error.</p> <p>Troubleshooting: Check sensor installation position, check damage / function of the sensor and cable, check connection contacts, check sensor type (PT1000 or NTC), if there is available free input set it for this sensor and connect sensor.</p>
E9	TANK 4 UPPER SENSOR	<p>Possible cause: interruption in el. wires between sensor and controller, contact on the controller, cold connection or damaged sensor, set wrong sensor type at configuration.</p> <p>Controller status: Controller works without tank that has sensor error.</p> <p>Troubleshooting: Check sensor installation position, check damage / function of the sensor and cable, check connection contacts, check sensor type (PT1000 or NTC), if there is available free input set it for this sensor and connect sensor.</p>
E10	TANK 4 LOWER SENSOR	<p>Possible cause: interruption in el. wires between sensor and controller, contact on the controller, cold connection or damaged sensor, set wrong sensor type at configuration.</p> <p>Controller status: Controller works without tank that has sensor error.</p> <p>Troubleshooting: Check sensor installation position, check damage / function of the sensor and cable, check connection contacts, check sensor type (PT1000 or NTC), if there is available free input set it for this sensor and connect sensor.</p>
E11	BOILER 1 SENSOR	<p>Possible cause: interruption in el. wires between sensor and controller, contact on the controller, cold connection or damaged sensor, set wrong sensor type at configuration.</p> <p>Controller status: Conventional heating source pump doesn't work.</p> <p>Troubleshooting: Check sensor installation position, check damage / function of the sensor and cable, check connection contacts, check sensor type (PT1000 or NTC), if there is available free input set it for this sensor and connect sensor.</p>
E12	BOILER 2 SENSOR	<p>Possible cause: interruption in el. wires between sensor and controller, contact on the controller, cold connection or damaged sensor, set wrong sensor type at configuration.</p> <p>Controller status: Conventional heating source pump doesn't work.</p> <p>Troubleshooting: Check sensor installation position, check damage / function of the sensor and cable, check connection contacts, check sensor type (PT1000 or NTC), if there is available free input set it for this sensor and connect sensor.</p>

E13	BACK FLOW SENSOR	<p>Possible cause: interruption in el. wires between sensor and controller, contact on the controller, cold connection or damaged sensor, set wrong sensor type at configuration.</p> <p>Controller status: Controller works normally, for energy measuring uses tank lower sensor (less accurate calculation of received energy).</p> <p>Troubleshooting: Check sensor installation position, check damage / function of the sensor and cable, check connection contacts, check sensor type (PT1000 or NTC), if there is available free input set it for this sensor and connect sensor.</p>
E14	OUTDOOR SENSOR	<p>Possible cause: interruption in el. wires between sensor and controller, contact on the controller, cold connection or damaged sensor, set wrong sensor type at configuration.</p> <p>Controller status: Controller works normally, outside temperature isn't displayed on screen.</p> <p>Troubleshooting: Check sensor installation position, check damage / function of the sensor and cable, check connection contacts, check sensor type (PT1000 or NTC), if there is available free input set it for this sensor and connect sensor.</p>
E15	NOT ACTIVE	
E100	COMMUNICATION ERROR WITH WIFI	<p>Possible cause: Damaged UTP cable or connections on mainboard of controller or WIFI-box.</p> <p>Controller status: Controller works normally, there isn't connection to the web portal.</p> <p>Troubleshooting: Replace UTP cable, call authorized serviceman.</p>

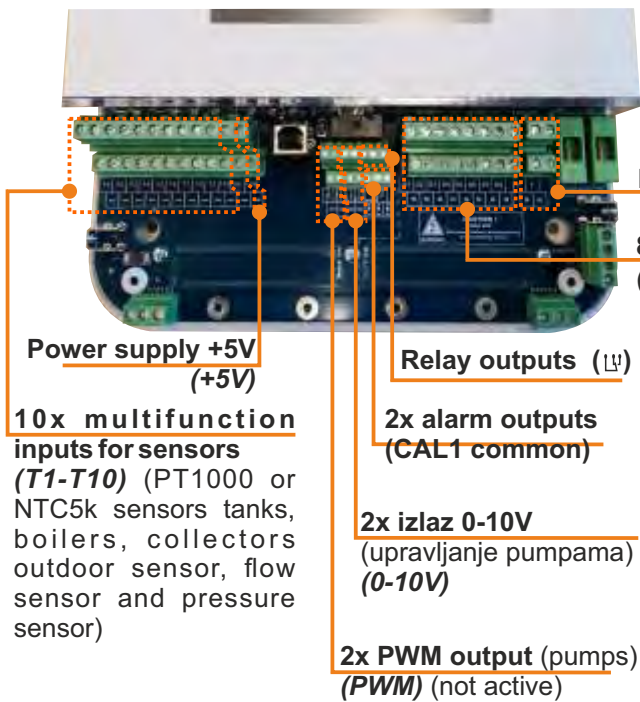
WARNING LIST

WARNING	NAME	DESCRIPTION
W1	FACTORY SETTINGS LOADED	<p>Possible cause: Displayed when regulation automatically loads factory settings because values in database are not correct. In normal circumstances this warning appears after first turning on after firmware change.</p> <p>Controller status: System configuration is set to factory setting, regulation doesn't work properly.</p> <p>Note: Find the cause of the factory reset, configure the regulation again, call authorized serviceman.</p>
W2	DATE AND TIME ARE NOT SET	<p>Possible cause: Clock is reset to 00:00 and date is reset to 01.01.2000. after controller switching off or power supply failure.</p> <p>Controller status: Controller works normally but all functions that use schedule doesn't work properly.</p> <p>Troubleshooting: Replace the battery (CR1220) in the display, set date and time.</p>
W3	REPLACE THE GLYCOL	<p>Possible cause: Period of 2 years has passed from last glycol counter reset.</p> <p>Controller status: Controller works normally.</p> <p>Note: Reset glycol counter after replacing the glycol in solar system.</p>
W4	LOW SYSTEM PRESSURE	<p>Possible cause: Airvent valve on collectors isn't open, fluid is leaking on connections, solar system isn't filled enough.</p> <p>Regulation status: Controller works normally.</p> <p>Note: Refill the solar system with solar fluid and airvent the system.</p>
W5	ALL TANKS ARE DISABLED	<p>Possible cause: All tanks in the solar system are disabled.</p> <p>Controller status: Regulation works normally.</p> <p>Note: Enable at least one tank for normal working of the solar system. If all tanks are disabled, collector pump doesn't work and boiling will start in the collectors.</p>

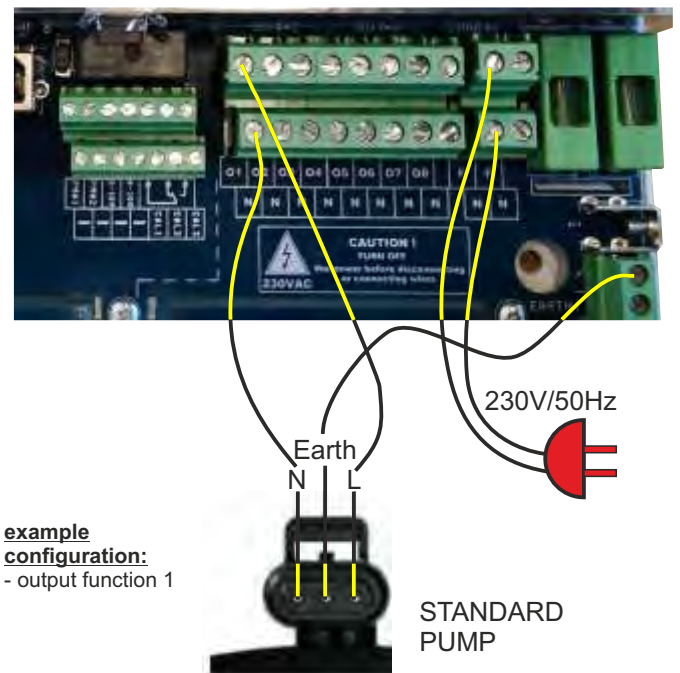
INFORMATION LIST

INFO.	NAME	DESCRIPTION
I1-1	POWER SUPPLY FAILURE	<p>Description: Power supply failure or switching off the controller on main switch (0/1).</p> <p>Controller status: Information is entered into History without displaying on the screen. Time of entry is time of power failure/time of switching off main switch.</p> <p>Troubleshooting: Check if the main switch is on 1, if there is power supply to the controller, if fuse is not damaged, call authorized serviceman.</p>
I1-2	POWER SUPPLY RETURN	<p>Description: Power supply returns or switching on the controller on main switch (0/1).</p> <p>Controller status: Information is entered into History without displaying on the screen. Time of entry is time of power return/time of switching on main switch.</p> <p>Troubleshooting: -</p>
I2	MAXIMUM COLLECTOR TEMPERATURE	<p>Description: When temperature in collectors is above maximum set collector temperature, collector pump stops to protect armature and ability to circulate because of steam. All tanks are full with energy, air in the collectors, to low flow through collectors, to many collectors, to low pressure in the solar system.</p> <p>Controller status: Controller works normally, collector pump doesn't work</p> <p>Note: If this information occurs regularly, check for air in the solar system (collectors), pressure in the solar system, recommended flow through collectors, set temperatures in the tanks/maximum temperature of collectors. It's recommended to enable collector cooling function and/or tank cooling function.</p>
I3	FREEZE PROTECTION	<p>Description: Information of active antifreeze protection function - low outdoor temperature.</p> <p>Controller status: Controller works normally.</p> <p>Note: Check freezing point of the solar fluid in the system to prevent possibility of solar system damage and often solar tank cooling.</p>
I4	TANK DISINFECTION	<p>Description: Information of active legionella protection function (Tank disinfection).</p> <p>Controller status: Controller works normally.</p> <p>Note: Check if the legionella protection function was done.</p>

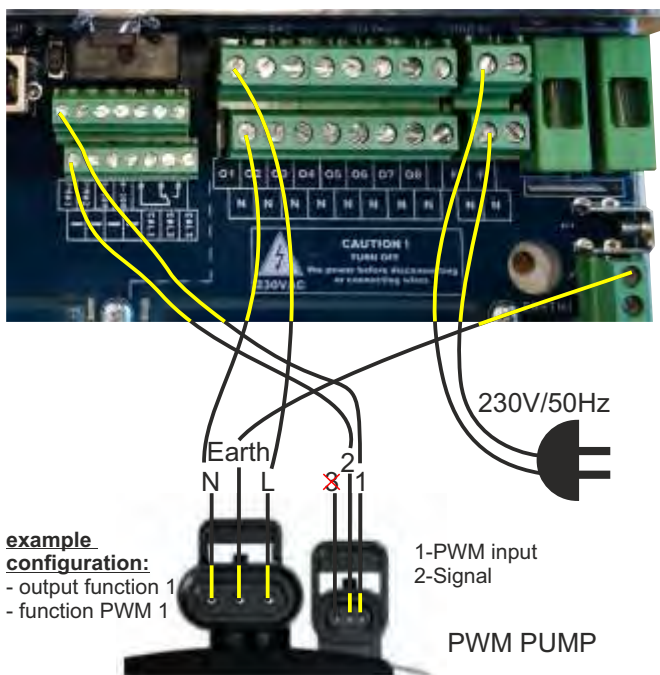
ELECTRIC CONNECTION



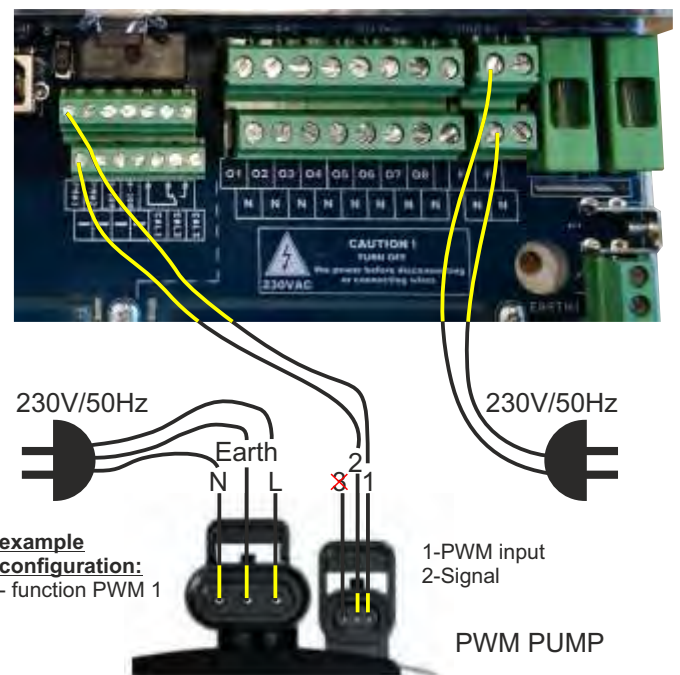
Spoj standardne pumpe (izlaz 1) / napajanja (napajanje pumpe preko triaca regulacije)



Spoj PWM upravljane pumpe (PWM1) / napajanja (napajanje pumpe preko triaca regulacije)



Spoj PWM upravljane pumpe (PWM1) / napajanja (napajanje pumpe neovisno od regulacije)



RESISTANCE LIST NTC **PT1000** SENSOR
(measuring field -30 - +400 °C)

Temperature (°C)	Resis. (W)	Temperature (°C)	Resis. (W)
-30	885	225	1.866
-25	904	230	1.886
-20	923	235	1.905
-15	942	240	1.924
-10	962	245	1.943
-5	981	250	1.963
0	1.000	255	1.982
5	1.019	260	2.001
10	1.039	265	2.020
15	1.058	270	2.040
20	1.077	275	2.059
25	1.096	280	2.078
30	1.116	285	2.097
35	1.135	290	2.117
40	1.154	295	2.136
45	1.173	300	2.155
50	1.193	305	2.174
55	1.212	310	2.194
60	1.231	315	2.213
65	1.250	320	2.232
70	1.270	325	2.251
75	1.289	330	2.271
80	1.308	335	2.290
85	1.327	340	2.309
90	1.347	345	2.328
95	1.366	350	2.348
100	1.385	355	2.367
105	1.404	360	2.386
110	1.424	365	2.405
115	1.443	370	2.425
120	1.462	375	2.444
125	1.481	380	2.463
130	1.501	385	2.482
135	1.520	390	2.502
140	1.539	395	2.521
145	1.558	400	2.540
150	1.578		
155	1.597		
160	1.616		
165	1.635		
170	1.655		
175	1.674		
180	1.693		
185	1.712		
190	1.732		
195	1.751		
200	1.770		
205	1.789		
210	1.809		
215	1.828		
220	1.847		

RESISTANCE LIST NTC **5k/25°C** SENSOR
(measuring field from -20 - +130 °C)

Temperature (°C)	Resistance (Ω)
-20	48.534
-15	36.465
-10	27.665
-5	21.158
0	16.325
5	12.694
10	9.950
15	7.854
20	6.245
25	5.000
30	4.028
34	3.266
40	2.663
45	2.184
50	1.801
55	1.493
60	1.244
65	1.041
70	876
75	740,7
80	629,0
85	536,2
90	458,8
95	394,3
100	340,0
105	294,3
110	255,6
115	222,7
120	190,7
125	170,8
130	150,5

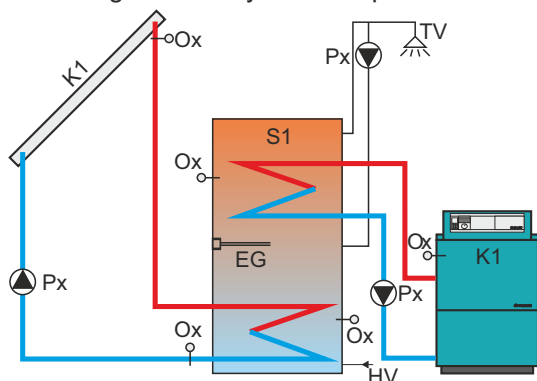
EXAMPLES OF SELECTING THE SOLAR SYSTEM COMPONENTS

Examples of selecting the solar system components

1. example:

1 flat collector field + 1 DHW tank + recirculation + electric heater + 1 oil boiler + back flow sensor

Examples of selecting the solar system components

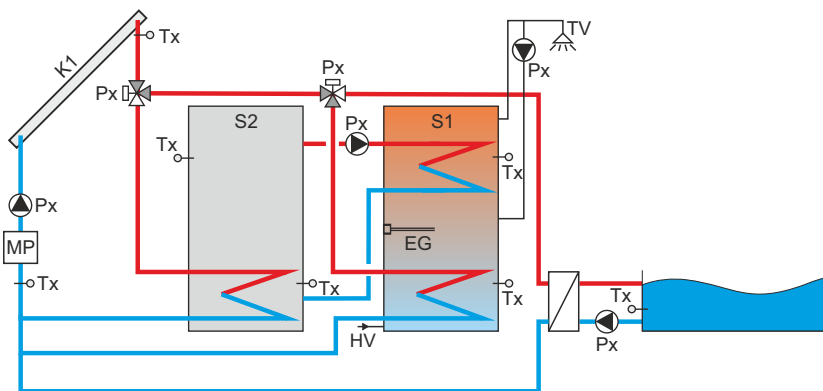


collectors	collector fields	<input checked="" type="checkbox"/> one field	<input type="checkbox"/> two fields
	field type	<input checked="" type="checkbox"/> vacuum tube	<input type="checkbox"/> flat plate
tanks	tank 1 type	<input type="checkbox"/> not exist	<input checked="" type="checkbox"/> DHW
		<input type="checkbox"/> BUF	<input type="checkbox"/> BUF with DHW pool
	tank 2 type	<input type="checkbox"/> not exist	<input type="checkbox"/> DHW
		<input type="checkbox"/> BUF	<input type="checkbox"/> BUF with DHW pool
	tank 3 type	<input type="checkbox"/> not exist	<input type="checkbox"/> DHW
		<input type="checkbox"/> BUF	<input type="checkbox"/> BUF with DHW pool
hydraulic conn.		<input type="checkbox"/> pump	<input checked="" type="checkbox"/> zone 2-way
		<input checked="" type="checkbox"/> zone 3-way	
mixing/heating		<input type="checkbox"/> not exist	<input checked="" type="checkbox"/> exist
heating	el. Heater installed	<input type="checkbox"/> not exist	<input checked="" type="checkbox"/> exist
	boiler 1 type	<input checked="" type="checkbox"/> not exist	<input type="checkbox"/> wood
		<input type="checkbox"/> pellet/wood chips	<input type="checkbox"/> gas/oil
		<input type="checkbox"/> heat pump	<input type="checkbox"/> electric boiler
recirculation		<input type="checkbox"/> not exist	<input checked="" type="checkbox"/> exist
flowmeter		<input type="checkbox"/> not exist	<input checked="" type="checkbox"/> exist
back flow sen.	sensor address	<input type="checkbox"/> not exist	<input type="checkbox"/> T1...
		<input checked="" type="checkbox"/> T10	

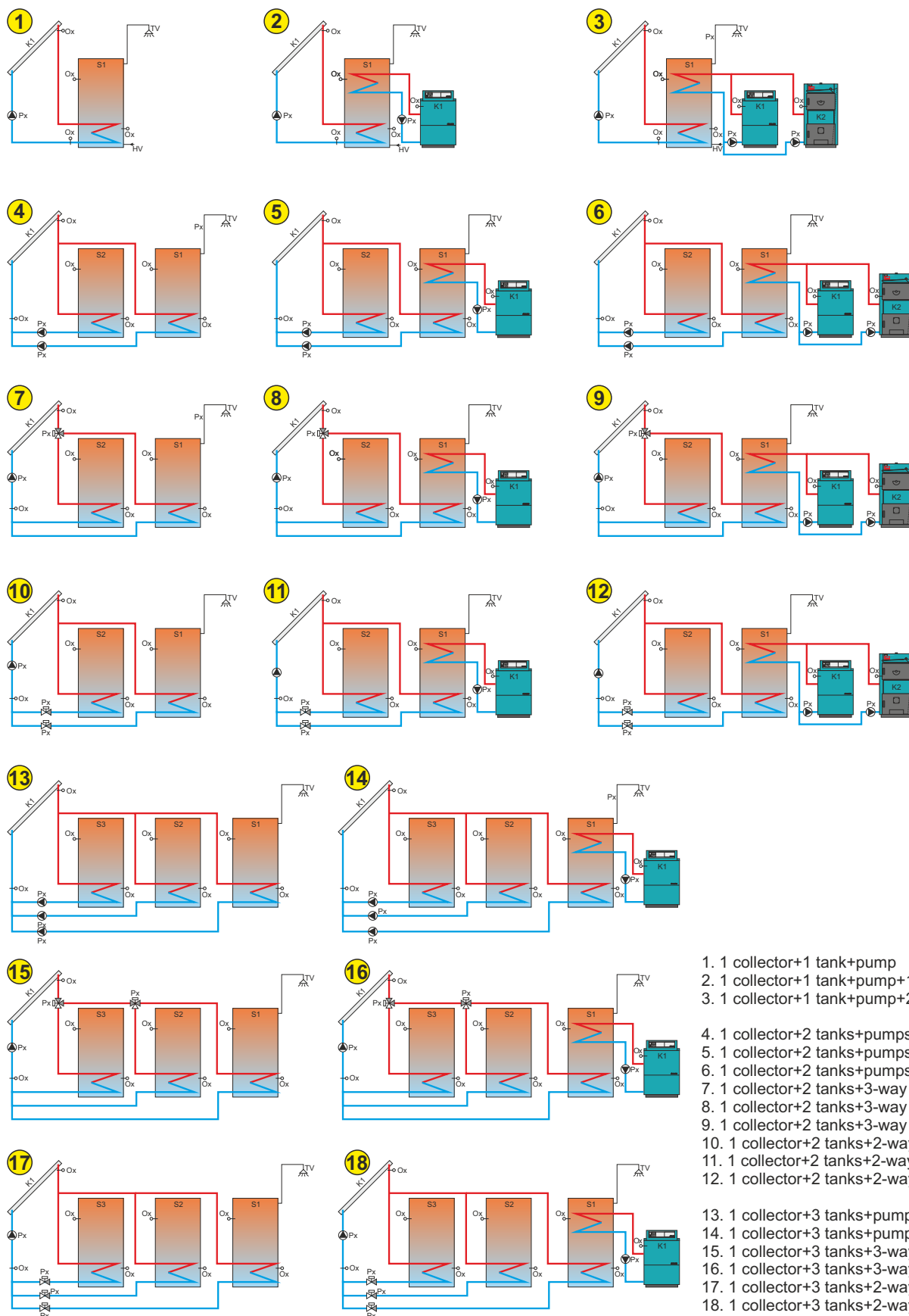
collectors	collector fields	<input checked="" type="checkbox"/> one filed	<input type="checkbox"/> two fields
	field type	<input type="checkbox"/> vacuum tube	<input checked="" type="checkbox"/> flat plate
tanks	tank 1 type	<input type="checkbox"/> not exist	<input checked="" type="checkbox"/> DHW
		<input type="checkbox"/> BUF	<input type="checkbox"/> BUF with DHW pool
	tank 2 type	<input checked="" type="checkbox"/> not exist	<input type="checkbox"/> DHW
		<input type="checkbox"/> BUF	<input type="checkbox"/> BUF with DHW pool
	tank 3 type	<input checked="" type="checkbox"/> not exist	<input type="checkbox"/> DHW
		<input type="checkbox"/> BUF	<input type="checkbox"/> BUF with DHW pool
hydraulic conn.		<input checked="" type="checkbox"/> pump	<input type="checkbox"/> zone 2-way
		<input type="checkbox"/> zone 3-way	
mixing/heating		<input checked="" type="checkbox"/> not exist	<input type="checkbox"/> exist
heating	el. Heater installed	<input type="checkbox"/> not exist	<input checked="" type="checkbox"/> exist
	boiler 1 type	<input type="checkbox"/> not exist	<input type="checkbox"/> wood
		<input type="checkbox"/> pellet/wood chips	<input checked="" type="checkbox"/> gas/oil
		<input type="checkbox"/> heat pump	<input type="checkbox"/> electric boiler
recirculation		<input type="checkbox"/> not exist	<input checked="" type="checkbox"/> exist
flowmeter		<input checked="" type="checkbox"/> not exist	<input type="checkbox"/> exist
back flow sen.	sensor address	<input type="checkbox"/> not exist	<input type="checkbox"/> T1...
		<input checked="" type="checkbox"/> T10	

2. example:

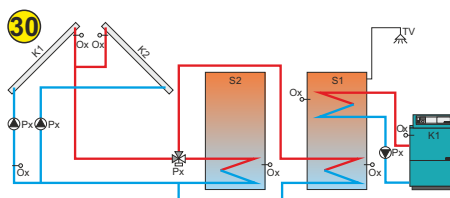
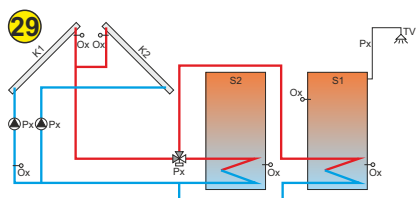
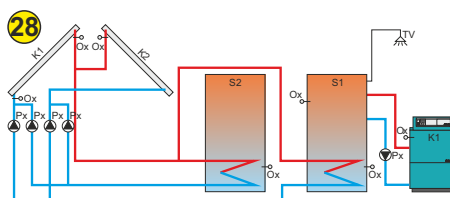
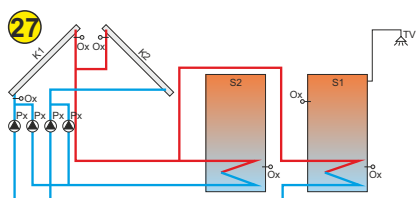
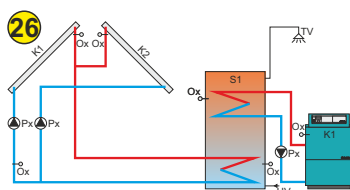
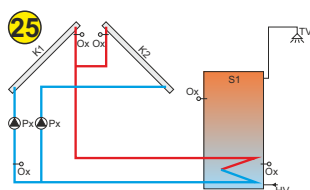
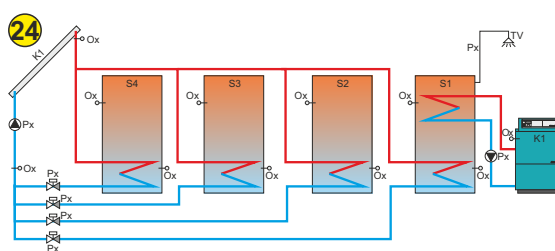
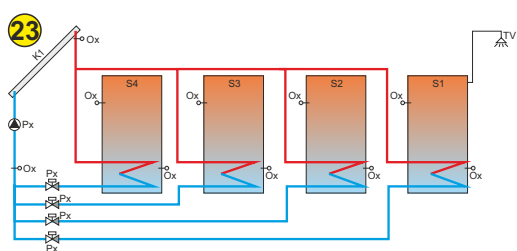
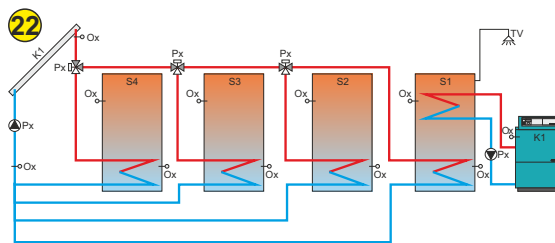
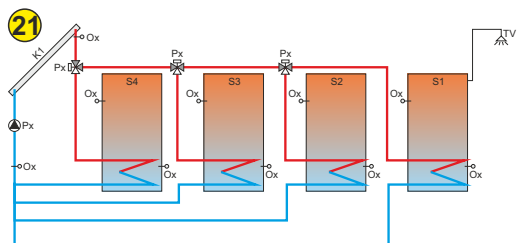
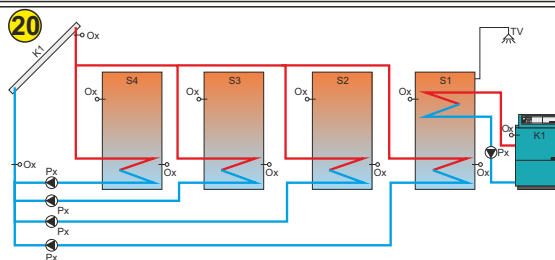
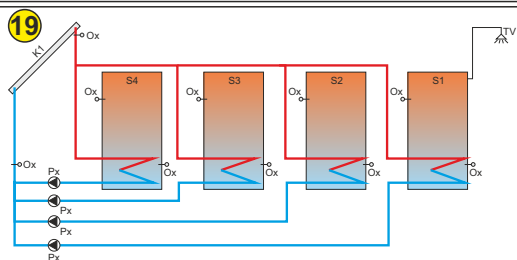
1 vacuum tube collector field + 1 DHW tank + recirculation + electric heater + 1 accumulation tank + heating BUF/DHW + pool + back flow sensor + flowmeter



In next pages are some of possible connecting schemes which solar regulation supports. Every tank can be **DHW tank** (shown in majority of schemes) or **accumulation tank** (buffer) or **accumulation tank with build in DHW tank** or on first 3 places **pool**. DHW tanks are serially connected - always from S1 goes to the top. On schemes options for electric heater, recirculation, heating pump, flowmeter... are **NOT displayed**. They can be enabled for every scheme according the description in technical manual.

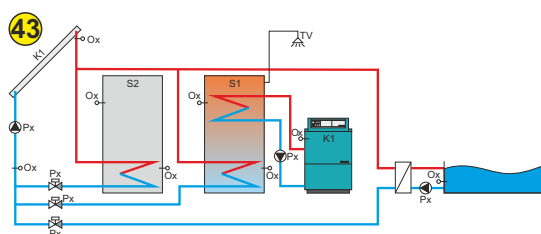
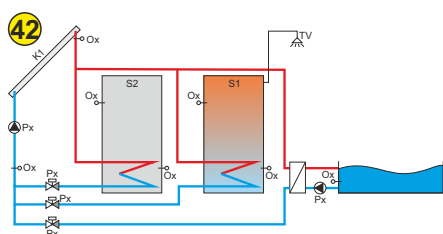
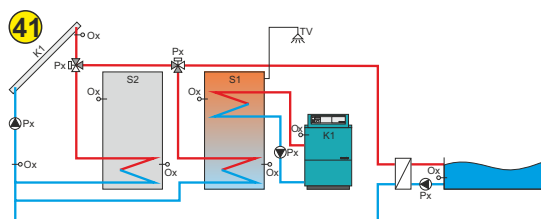
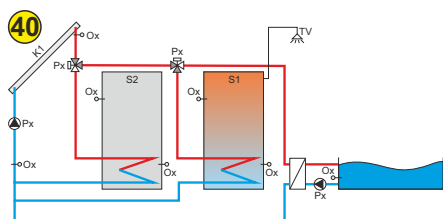
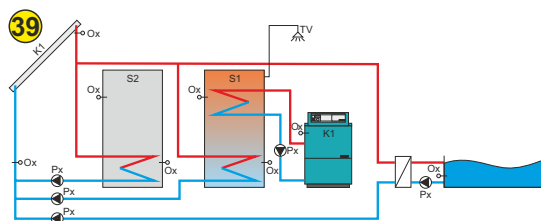
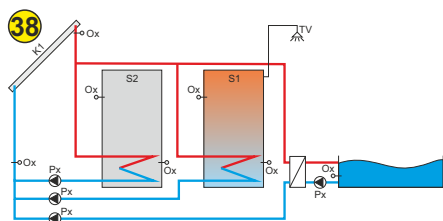
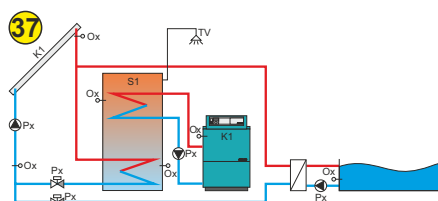
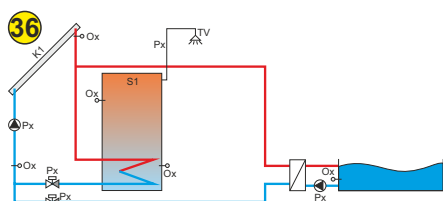
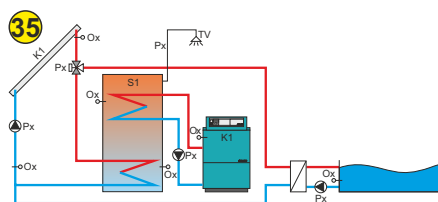
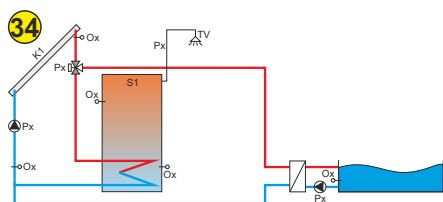
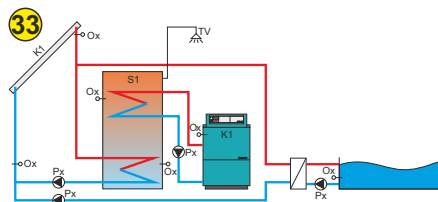
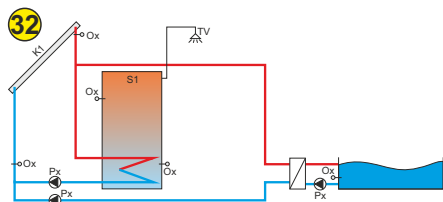
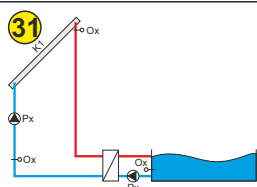


1. 1 collector+1 tank+pump
2. 1 collector+1 tank+pump+1 boiler
3. 1 collector+1 tank+pump+2 boilers
4. 1 collector+2 tanks+pumps
5. 1 collector+2 tanks+pumps+1 boiler
6. 1 collector+2 tanks+pumps+2 boilers
7. 1 collector+2 tanks+3-way valve
8. 1 collector+2 tanks+3-way valves+1 boiler
9. 1 collector+2 tanks+3-way valves+2 boiler
10. 1 collector+2 tanks+2-way valves
11. 1 collector+2 tanks+2-way valves+1 boiler
12. 1 collector+2 tanks+2-way valves+2 boilers
13. 1 collector+3 tanks+pumps
14. 1 collector+3 tanks+pumps+1 boiler
15. 1 collector+3 tanks+3-way valve
16. 1 collector+3 tanks+3-way valves+1 boiler
17. 1 collector+3 tanks+2-way valves
18. 1 collector+3 tanks+2-way valves+1 boiler



- 19. 1 collector+4 tanks+pumps
- 20. 1 collector+4 tanks+pumps+1 boiler
- 21. 1 collector+4 tanks+3-way valves
- 22. 1 collector+4 tanks+3-way valves+1 boiler
- 23. 1 collector+4 tanks+2-way valves
- 24. 1 collector+4 tanks+2-way valves+1 boiler

- 25. 2 collectors+1 tank+pumps
- 26. 2 collectors+1 tank+pumps+1 boiler
- 27. 2 collectors+2 tanks+pumps
- 28. 2 collectors+2 tanks+pumps+1 boiler
- 29. 2 collectors+2 tanks+3-way valve
- 30. 2 collectors+2 tanks+3-way valve+1 boiler



31. 1 collector+pool

32. 1 collector+1 tank+pool+pumps

33. 1 collector+1 tank+pool+pumps+1 boiler

34. 1 collector+1 tank+pool+3-way valve

35. 1 collector+1 tank+pool+3-way valve+1 boiler

36. 1 collector+1 tank+pool+2-way valve

37. 1 collector+1 tank+pool+2-way valve+1 boiler

38. 1 collector+2 tanks+pool+pumps

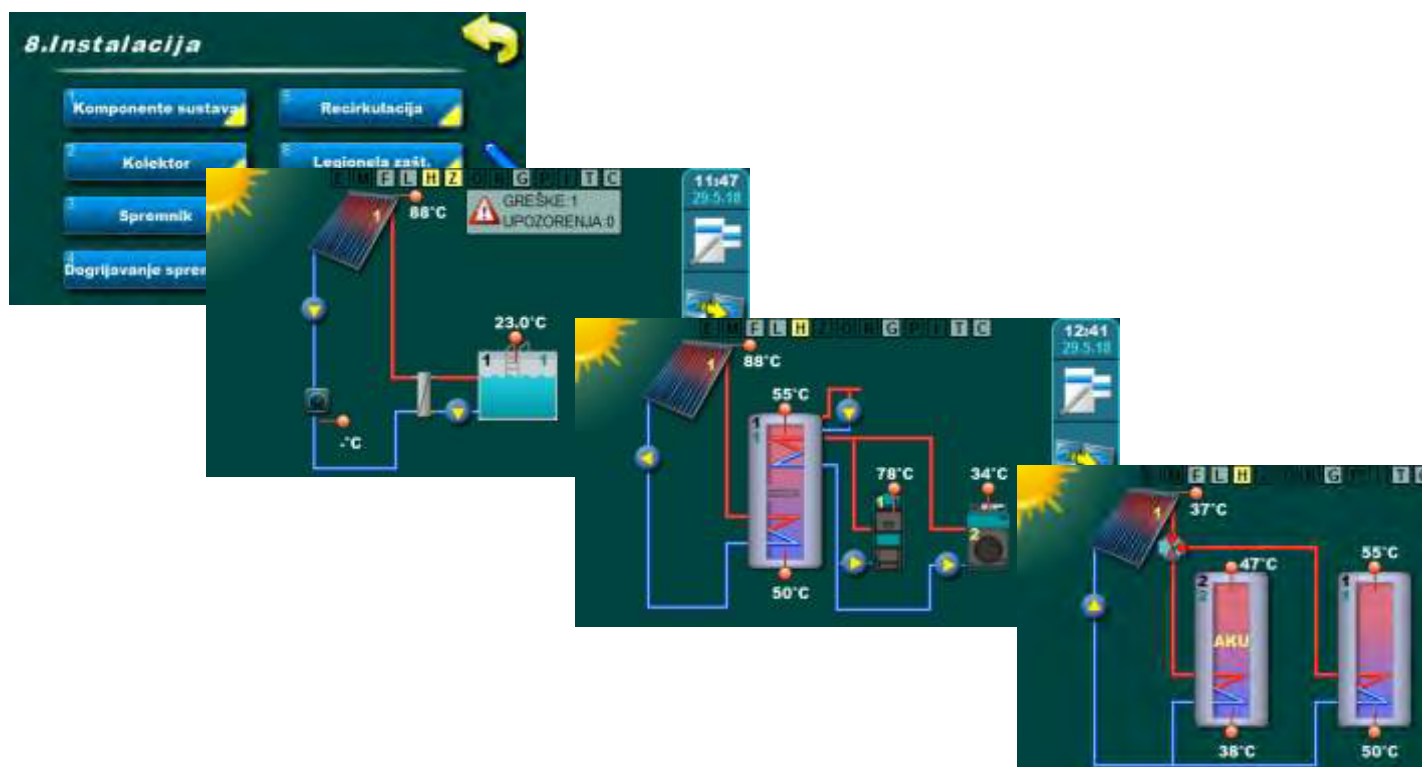
39. 1 collector+2 tanks+pool+pumps+1 boiler

40. 1 collector+2 tanks+pool+3-way valve

41. 1 collector+2 tanks+pool+1 boiler+3-way valve

42. 1 collector+2 tanks+pool+2-way valve

43. 1 collector+2 tanks+pool+1 boiler+2-way valve



SOLAR CONTROLLER COMMISSIONING LIST



Cm-SOL controller commissioning list

Basic information

1. Controller serial number : .
2. User name and surname: _____
3. Address / Phone: _____
4. Commissioned by: _____
5. Commissioning date: ...

Installation

6. According to the technical instructions drill 3 holes on the controller installation place, insert dowels, screw upper screw (to 4 mm). Remove lower controller cover, hang controller on to upper screw and with 2 lower screws fasten the controller. ☐ YES
7. Connect sensors, flowmeter, pressure sensor to the connecting clamps (inputs T1 -T10).. ☐ YES
8. Connect pumps, valves to the connecting clamps (outputs O1-O8)..... ☐ YES
9. Connect power supply to the connecting clamps (F, N)..... ☐ YES
10. Install wire holder and close controller lower cover... ☐ YES
11. Connect additional equipment to the UTP connector on the left controller side . ☐ YES ☐ NO

Controller setting

12. Turn on the controller on the main switch and select language. ☐ YES

IMPORTANT!!!

Menus are active (dynamic) and are changed according to set configuration (menu numbers don't have to match Your current installation)!

Configuration of the solar system components

13. Configuration is done in the menu 8. Installation
->8.Installation->0000->Enter file name->...

8.1.1. Collectors	8.1.1.1. Collector fields	enter X or value
		one field
		two fields
	8.1.1.2. Field type	vacuum tube
		flat plate

8.1.2. Tanks	8.1.2.1. Tank 1 type	not exist
		DHW
		BUF
		BUF with DHW
		pool
	8.1.2.2. Tank 2 type	not exist
		DHW
		BUF
		BUF with DHW
		pool
	8.1.2.3. Tank 3 type	not exist
		DHW
		BUF
		BUF with DHW
		pool
	8.1.2.4. Tank 4 type	not exist
		DHW
		BUF
		BUF with DHW
		pool
	8.1.2.5. Hydraulic connection	pump
		zone 2-way
		zone 3-way
	8.1.2.6. Mixing/Heating	not exist
		exist
8.1.3. Heating	8.1.3.1. El. heater installed	not exist
		exist
	8.1.3.2. Boiler 1 type	not exist
		wood
		pellet/wood chips
		gas/oil
		heat pump
		electric boiler
	8.1.3.3. Boiler 2 type	not exist
		wood
		pellet/wood chips
		gas/oil
		heat pump
		electric boiler
8.1.4. Recirculation		not exist
		exist
8.1.5. Flowmeter		not exist
		exist



8.1.6. Back flow sensor	8.1.6.1. Sensor address		not exist														
			= T														
	8.1.6.2. Sensor type		PT1000														
			NTC														
8.1.7. Outdoor sensor	8.1.7.1. Sensor address		not exist														
			= T														
	8.1.7.2. Sensor type		PT1000														
			NTC														
8.1.8. Pumps/Outputs	8.1.8.1. Outputs function	PWM / AI <table border="1"> <tr><td></td><td></td></tr> <tr><td></td><td></td></tr> <tr><td></td><td></td></tr> <tr><td></td><td></td></tr> <tr><td></td><td></td></tr> <tr><td></td><td></td></tr> <tr><td></td><td></td></tr> </table>															enter output number
			= pump collector 1														
			= pump collector 2														
			= pump tank 1														
			= pump tank 2														
			= pump tank 3														
			= pump tank 4														
			= pump boiler 1														
			= pump boiler 2														
			= electric heater														
			= pump recirculation														
			= pump pool														
			= pump exchanger														
			= pump mixing/heating														
			= zone 3-way 1														
			= zone 3-way 2														
			= zone 3-way 3														
			= zone 3-way 4														
			= zone 2-way 1														
			= zone 2-way 2														
			= zone 2-way 3														
= zone 2-way 4																	
8.1.9. Pressure control			not exist														
			exist														
8.2. Collectors	8.2.1.4. Collector 1 sensor address		not exist														
			= T														
	8.2.2.4. Collector 2 sensor address		not exist														
			= T														
8.3. Spremnik	8.3.2.4.1. Tank 1 upper sensor address		not exist														
			= T														
	8.3.2.5.1. Tank 1 lower sensor address		not exist														
			= T														
	8.3.3.4.1. Tank 2 upper sensor address		not exist														
			= T														
	8.3.3.5.1. Tank 2 lower sensor address		not exist														
			= T														

	8.3.4.4.1.Tank 3 upper sensor address	not exist = T
	8.3.4.5.1.Tank 3 lower sensor address	not exist = T
	8.3.5.4.1.Tank 4 upper sensor address	not exist = T
	8.3.5.5.1.Tank 4 lower sensor address	not exist = T
8.4. Tank heating.	8.4.2.8. Boiler 1 sensor address	not exist = T
	8.4.3.8. Boiler 2 sensor address	not exist = T
8.7. Energy measuring	8.7.1. Flowmeter	not exist disabled enabled ml/impuls l/impuls = volume/impuls = T (flowmeter address)
	8.7.2. Collector 1 flow	lit/min.
	8.7.3. Collector 2 flow	lit/min.
	8.7.4. Glycol type	propylene glycol ethylene glycol
	8.7.5. Mixing %	%

14. With Manual test function test all connected components. ☐ YES

->8.8. Manual test

15. Write down software version from controller: Software version: .

->8.10.2. Software version

16. Enter correct date and time..... ☐ YES

->5.4..Date and time

17. Disable language selection at start..... ☐ YES

->5.2. Language selection->OFF

18. Reset glycol counter (after filling the solar system with new glycol) ☐ YES

->8.12.2. Reset glycol counter



Next points enable and configure according the set system and customer demands

19. Enable and set Puls start collector..... ☐ YES ☐ NO
 ->8.2.1.3. Puls collector start
20. Enable and set Collector cooling..... ☐ YES ☐ NO
 ->8.2.2. Collector cooling
21. Enable and set Antifreeze protection of the collector... ☐ YES ☐ NO
 ->8.2.3. Antifreeze protection
22. If there are more tanks, enable and set Priority test ☐ YES ☐ NO
 ->8.3.6. Priority test
23. Enable and set Tank cooling..... ☐ YES ☐ NO
 ->8.3.7. Tank cooling
24. Enable and set DHW heating..... ☐ YES ☐ NO
 ->8.4. DHW heating
25. Enable and set Recirculation..... ☐ YES ☐ NO
 ->8.5. Recirculation
26. Enable and set Legionella protection..... ☐ YES ☐ NO
 ->8.6. Legionella protection
27. If Cm WiFi-box (additional equipment) is installed, enter local WiFi network name and password to which it will be connected..... ☐ YES ☐ NO
 ->8.11. Internet supervision
28. Save made changes in 'Service parameters'
 ->8.Installation->PIN->0000->8.9.Save/Load->8.9.2.Save ☐ YES
29. According to customer's demands set the: temperatures, differences, schedules ☐ YES ☐ NO
30. Save made changes to user file:
 ->6.Save/Load->6.1.Save ☐ YES
31. Inform the user with controller technical instructions ☐ YES
32. Notes regarding the commissioning:



Centrometal d.o.o. shall not be responsible for possible incorrect data caused by printing errors or error made in transcription and all figures and diagrams are for explanatory purposes only and relevant adjustment have to be made at the spot. In any case, it reserves the right to modify its products as deemed to be required and useful without any prior notification.

Centrometal d.o.o. Glavna 12, 40306 Macinec, Croatia

central tel: +385 40 372 600, fax: +385 40 372 611

service tel: +385 40 372 622, fax: +385 40 372 621

Centrometal
HEATING TECHNIQUE
