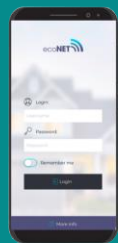


The **HPnet300CM** Internet module.



ecoNET.apk ecoNET.app



Remote control of HPCU360iCM control unit.



Technical manual for module  
ISSUE: 1.0\_EN

09-2020

Centrometal d.o.o.  
Glavna 12  
40306 MACINEC, CROATIA  
komercijala@centrometal.hr  
www.centrometal.hr

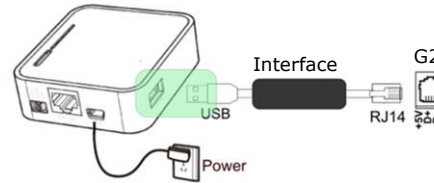
**General information**

The HPnet300CM Internet module enables operation remote control (on-line) HPCU360iCM control unit via Internet.

www.econet24.com

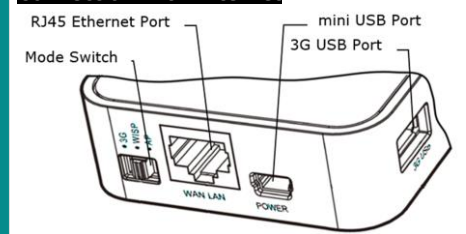


**Connection to the control unit**

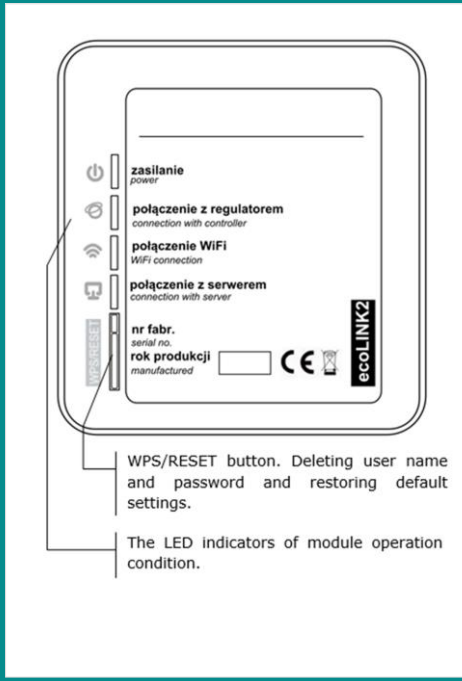
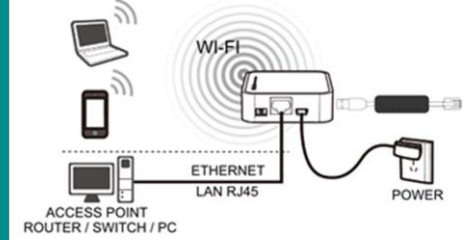


Connect the Internet module + module interface to the **G2** socket HPCU360iCM control unit.

**Connection with Internet**



Connect supply to the **mini USB Port** socket and interface to the **3G USB Port** socket. Connect router with the **RJ45 Ethernet Port** socket with LAN cable - socket does not have to be use in case of WiFi access. The **Mode Switch** can be set in any position.



LED	LED condition	Module operation condition
Power	● ON	Power on.
	○ OFF	Power off.
Connection with a control unit	● ON	Active connection of the control unit.
	○ OFF	No connection with control unit.
Connection with WiFi	● ON	Connection to a programmed wireless network is on.
	○ OFF	No connection with wireless network.
Connection with a server	● ON	Connection with www.econet24.com external server is on.
	○ OFF	No connection for www.econet24.com external server.

After turning on the supply, module for 1 min. it loads the system, only after this time it starts working.

In a connection between module with a control unit is active, the indicator lights up and then a parameter for module configuration is added to *User settings* control unit menu: *Internet module settings*. When connecting to a WiFi, the module requires that the router have DHCP server enabled. Select **SSID** - it is a name of the local WiFi which has to be the same for all devices working in this network. In the *Security type* - confirm security type in WiFi. In the *Password* - enter WiFi access password. Filling data correctly results in module connected to a WiFi network. The connection status of the module to the WiFi/LAN and econet24 server can be checked in the *User settings* menu, in the parameters: *Internet module WiFi status - WiFi*, *Internet module status - LAN*.

**Logging to econet24 account**

In order to log into an account on an external server, enter **www.econet24.com** into an address field of the web browser. Enter **Login** and **Password** in order to log into econet24 account.

**First logging to econet24 account**

In case of first logging, user has to create a new account in **REGISTER** tab. Following conditions must be met: the control unit has to be connected to a supply and properly connected to module and the module should be connected to the WiFi and be logged into the external server - "Server connection" indicator is active in the module. From *Service settings* → *Installation control* → *Information control unit* menu should be read the UID number (unique ID of the control unit). The UID number should be entered on the **REGISTRATION** tab. If the system correctly validates the UID number, the account registration form will be displayed. It should be complete the form with the data of the controller user and enter the login password. Form field:

- **UID controller** - the control unit UID is shown. The econet24 server verifies whether UID number is correct.
- **Controller label** - enter any name of control unit.
- **Remote access to the controller by the service and the producer** - enables to access and edit control unit parameters via the service and the manufacturer.

- **Controller installation address** (Same as the user's address) - check this field if the control unit address is the same as residential address.
- **Alarm notifications** (Allows to send alarm notifications by email) - in case an alert occurs, an alarm message including alarm contents will be sent on previously entered e-mail address.

Obligatory fields: **E-mail**, **Password**, **Password (again)**.  
Creating an econet24 account will only be possible after you have read the Terms of Use in the form of regulations. Press the **Register** button.

**www.econet24.com website support**

	Current readout of the control unit operation condition data and possibility of changing its selected parameters.
	Graphical representation of hydraulic diagram of installation with current operation condition readout for its particular elements.
	Detailed readout and modification of operation parameters of the control unit.

	Detailed reading and modification of advanced parameters of the control unit only after entering the service password.
	Data archive of selected control unit operation parameters.
	List of control unit alarms.
	Work schedule of the control unit and temperature reduction.
	Information about control unit and additional modules, possibility to change the address of control unit installation.
	Option to read parameters from the list of registered devices in one econet24 account.
	Add a new device UID to the list for econet24 account and logout.
	Select a Web site language.

The **Current Data** tab includes tiles with values of basic control unit operation parameters. A parameter to be modified is indicated by symbol. Just click on this tile and the value change window will appear, where set the new parameter value with the slider and then confirm with the **Save** button.



Exit with modification without saving a new setting is possible by clicking on the symbol.

The **Diagram** tab includes graphical connection scheme between control unit and heating/cooling circuit in the building with readouts of parameters from sensors in particular points of the hydraulic installation. A

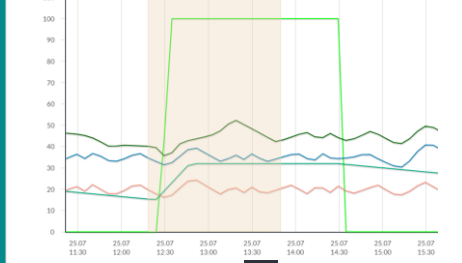
parameter to be modified is indicated by symbol. Just click in the edit box and the value change window will appear, where set the new parameter value with the slider and confirm with the **Save** button. Exit with modification without saving a new setting is possible by clicking on the symbol.

The basic parameters of the control unit work are displayed in the **User parameters** tab and can be modified by the user. Advanced parameters are displayed in the **Service parameters** tab and can only be modified after entering a service password. All displayed parameters are grouped accordingly. Click on the name of the selected parameter group and expand the list of available parameters.

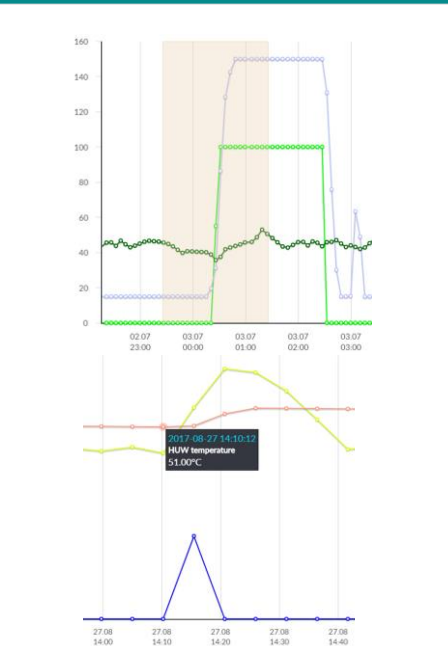
Parameters to be modified is indicated by symbol. In order to change, select the appropriate parameter name, click on the parameter, in the additional window that appears, set the new parameter value with the slider and confirm with the **Save** button. Exit with modification without saving a new setting

is possible by clicking on the symbol. The **Data history** tab enables to readout registered parameters concerning operation of the whole heating/cooling circuit in a selected time and present it in the form of a graph. Choose a time period for data readout by clicking **From:** or **To:** (select date and time in a calendar) or time interval: **Last night**, **last week**, **last month**.

The selection is accepted by the **Generate scheme** button. Then select from the list below the graph the parameters that will be shown in this graph. By specifying the choosing time zone in the graph, you can rescaling this area on more accurately.



In addition, clicking the symbol causes the "nodes" to be displayed in the graph. This is information about the time and value of a single sample of data sent by the control unit to econet24.



Return to the initial graph by pressing the symbol. The graph data can be saved as a \*.csv or \*.png file when you press symbol. In the **Alarms** tab, user can read: a list of registered alarms and other events sent by the control unit, a type of alarm, event and period of its occurrence is displayed. Log into **www.econet24.com** external server in order to display all logs of alarm conditions from the beginning of operation of the control unit. Alarm notices can be sent on e-mail. It enables the user to react fast in order to restore normal operation of the control unit. In the **Schedule** tab user have the option of setting the time schedules for circuits,

according to the list after clicking on the symbol. On a bar chart daily graph (24 hours), click on the appropriate bars (each bar corresponds to 30 minutes), which allows to set the activation or deactivation of the selected circuit in the selected time interval. Once set, choose **Save** button.



In the example above, on Tuesday, the choose circuit is deactivation between 6:00 and 7:30 and 15:30 to 19:00. In other ranges the circuit is active.

The **Device settings** tab enables to:

- change the control unit installation address,
- reading basic WiFi network parameters,
- readout a software version in the control unit and additional modules or panels, thermostats,
- update software in module.

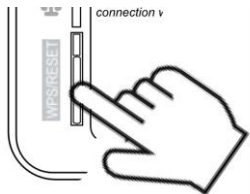
The econet24 server periodically checks availability of new software version for the module. It displays information concerning a new software version. All the user needs to do is to press **Update** button. Do not disconnect the device from a power supply during update process because it will cause its damage.

When changing WiFi network, click **Refresh**, select **Network name**, and used **Type of security**, e.g. WPA2 and enter **Password** to a selected network. All modifications must be confirmed by **Save** button.

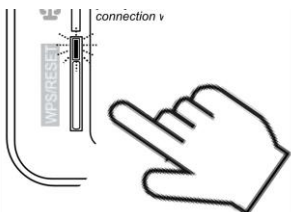
### Restoring default user name and password

Default username and password (user: **admin**, password: **admin**) can be restored with the use of WPS/RESET button located near indicators on the module housing. The module has to be connected to power supply.

1) During normal module operation, press and hold the WPS/RESET button for 10 sec.



2) After releasing the WPS/RESET button, the LED next to the button should flash several times.



3) You should wait about 2 min.

4) After this time, the module will restart automatically and will connect to the Internet.

5) The default user name and password will be restored.

### GNU General Public License Notice

This product includes software code developed by third parties, including software code subject to the GNU General Public License ("GPL"). As applicable, PLUM sp. z o. o. provides mail service of a machine readable copy of the corresponding GPL source code on CD-ROM upon request via email (plum@plum.pl) or traditional paper mail (PLUM sp. z o. o., ul. Wspólna 19, Ignatki, 16-001 Kleosin, Poland) will charge for a nominal cost to cover shipping and media charges as allowed under the GPL. This offer will be valid for at least 3 years.

The GPL Code used in this product is distributed WITHOUT ANY WARRANTY and is subject to the copyrights of one or more authors. Please refer to the following GNU General Public License for further information.

#### GNU GENERAL PUBLIC LICENSE

Version 2, June 1991  
Copyright (C) 1989, 1991 Free Software Foundation, Inc. 51 Franklin Street, Fifth Floor, Boston, MA 02110-1301, USA  
Everyone is permitted to copy and distribute verbatim copies of this license document, but changing it is not allowed.

#### Preamble

The licenses for most software are designed to take away your freedom to share and change it. By contrast, the GNU General Public License is intended to guarantee your freedom to share and change free software--to make sure the software is free for all its users. This General Public License applies to most of the Free Software Foundation's software and to any other program whose authors commit to using it. (Some other Free Software Foundation software is covered by the GNU Lesser General Public License instead.) You can apply it to your programs, too.

When we speak of free software, we are referring to freedom, not price. Our General Public Licenses are designed to make sure that you have the freedom to distribute copies of free software (and charge for this service if you wish), that you receive source code or can get it if you want it, that you can change the software or use pieces of it in new free programs; and that you know you can do these things.

c) Accompany it with the information you received as to the offer to distribute corresponding source code. (This alternative is allowed only for noncommercial distribution and only if you received the program in object code or executable form with such an offer, in accord with Subsection b above.) The source code for a work means the preferred form of the work for making modifications to it. For an executable work, complete source code means all the source code for all modules it contains, plus any associated interface definition files, plus the scripts used to control compilation and installation of the executable. However, as a special exception, the source code distributed need not include anything that is normally distributed (in either source or binary form) with the major components (compiler, kernel, and so on) of the operating system on which the executable runs, unless that component itself accompanies the executable. If distribution of executable or object code is made by offering access to copy from a designated place, then offering equivalent access to copy the source code from the same place counts as distribution of the source code, even though third parties are not compelled to copy the source along with the object code.

4. You may not copy, modify, sublicense, or distribute the Program except as expressly provided under this License. Any attempt otherwise to copy, modify, sublicense or distribute the Program is void, and will automatically terminate your rights under this License. However, parties who have received copies, or rights, from you under this License will not have their licenses terminated so long as such parties remain in full compliance.

5. You are not required to accept this License, since you have not signed it. However, nothing else grants you permission to modify or distribute the Program or its derivative works. These actions are prohibited by law if you do not accept this License. Therefore, by modifying or distributing the Program (or any work based on the Program), you indicate your acceptance of this License to do so, and all its terms and conditions for copying, distributing or modifying the Program or works based on it.

6. Each time you redistribute the Program, the recipient automatically receives a license from the original licensor to copy, distribute or modify the Program subject to these terms and conditions.

You may not impose any further restrictions on the recipients' exercise of the rights granted herein. You are not responsible for enforcing compliance by third parties to this License.

7. If, as a consequence of a court judgment or allegation of patent infringement or for any other reason (not limited to patent issues), conditions are imposed on you (whether by court order, agreement or otherwise) that contradict the conditions of this License, they do not excuse you from the conditions of this License. If you cannot distribute so as to satisfy simultaneously your obligations under this License and any other pertinent obligations, then as a consequence you may not distribute the Program at all. For example, if a patent license would not permit royalty-free redistribution of the Program by all those who receive copies directly or indirectly through you, then the only way you could satisfy both it and this License would be to refrain entirely from distribution of the Program.

If any portion of this section is held invalid or unenforceable under any particular circumstance, the balance of the section is intended to apply and the section as a whole is intended to apply in other circumstances.

It is not the purpose of this section to induce you to infringe any patents or other property right claims or to contest validity of any such claims; this section has the sole purpose of protecting the integrity of the free software distribution system, which is implemented by public license practices. Many people have made generous contributions to the wide range of software distributed through that system in reliance on consistent application of that system; it is up to the author/donor to decide if he or she is willing to distribute software through any other system and a licensee cannot impose that choice.

This section is intended to make thoroughly clear what is believed to be a consequence of the rest of this License.

8. If the distribution and/or use of the Program is restricted in certain countries either by patents or by copyrighted interfaces, the original copyright holder who places the Program under this License may add an explicit geographical distribution limitation excluding those countries, so that distribution is permitted only in or among countries not thus excluded. In such case, this License incorporates the limitation as if written in the body of this License.

### Mobile application

The mobile application allows remote access via smartphone only to control unit equipped with the Internet module. The application uses an Internet connection and a user account on the **www.econet24.com** website. The Android or iOS mobile application is available download directly under the QR link.

ecoNET.apk



ecoNET.app



Also, for each author's protection and ours, we want to make certain that everyone understands that there is no warranty for this free software. If the software is modified by someone else and passed on, we want its recipients to know that what they have is not the original, so that any problems introduced by others will not reflect on the original authors' reputations. Finally, any free program is threatened constantly by software patents. We wish to avoid the danger that redistributors of a free program will individually obtain patent licenses, in effect making the program proprietary. To prevent this, we have made it clear that any patent must be licensed for everyone's free use or not licensed at all.

The precise terms and conditions for copying, distribution and modification follow. Activities other than copying, distribution and modification are not covered by this License; they are outside its scope. The act of running the Program is not restricted, and the output from the Program is covered only if its contents constitute a work based on the Program (independent of having been made by running the Program). Whether that is true depends on what the Program does.

1. You may copy and distribute verbatim copies of the Program's source code as you receive it, in any medium, provided that you conspicuously and appropriately publish on each copy an appropriate copyright notice and disclaimer of warranty; keep intact all the notices that refer to this License and to the absence of any warranty; and give any other recipients of the Program a copy of this License along with the Program. You may charge a fee for the physical act of transferring a copy, and you may at your option offer warranty protection in exchange for a fee.

2. You may modify your copy or copies of the Program or any portion of it, thus forming a work based on the Program, and copy and distribute such modifications or work under the terms of Section 1 above, provided that you also meet all of these conditions:

a) You must cause the modified files to carry prominent notices stating that you changed the files and the date of any change. b) You must cause any work that you distribute or publish, that in whole or in part contains or is derived from the Program or any part thereof, to be licensed as a whole at no charge to all third

9. The Free Software Foundation may publish revised and/or new versions of the General Public License from time to time. Such new versions will be similar in spirit to the present version, but may differ in detail to address new problems or concerns.

Each version is given a distinguishing version number. If the Program specifies a version number of this License which applies to it and "any later version", you have the option of following the terms and conditions either of that version or of any later version published by the Free Software Foundation. If the Program does not specify a version number of this License, you may choose any version ever published by the Free Software Foundation.

10. If you wish to incorporate parts of the Program into other free programs whose distribution conditions are different, write to the author to ask for permission. For software which is copyrighted by the Free Software Foundation, write to the Free Software Foundation; we sometimes make exceptions for this. Our decision will be guided by the two goals of preserving the free status of all derivatives of our free software and of promoting the sharing and reuse of software generally.

#### NO WARRANTY

11. BECAUSE THE PROGRAM IS LICENSED FREE OF CHARGE, THERE IS NO WARRANTY FOR THE PROGRAM, TO THE EXTENT PERMITTED BY APPLICABLE LAW. EXCEPT WHEN OTHERWISE STATED IN WRITING THE COPYRIGHT HOLDERS AND/OR OTHER PARTIES PROVIDE THE PROGRAM "AS IS" WITHOUT WARRANTY OF ANY KIND, EITHER EXPRESSED OR IMPLIED, INCLUDING, BUT NOT LIMITED TO, THE IMPLIED WARRANTIES OF MERCHANTABILITY AND FITNESS FOR A PARTICULAR PURPOSE. THE ENTIRE RISK AS TO THE QUALITY AND PERFORMANCE OF THE PROGRAM IS WITH YOU. SHOULD THE PROGRAM PROVE DEFECTIVE, YOU ASSUME THE COST OF ALL NECESSARY SERVICING, REPAIR OR CORRECTION.

c) If the modified program normally reads commands interactively when run, you must cause it, when started running for such interactive use in the most ordinary way, to print or display an announcement including an appropriate copyright notice and a notice that there is no warranty (or else, saying that you provide a warranty) and that users may redistribute the program under these conditions, and telling the user how to view a copy of this License. (Exception: if the Program itself is interactive but does not normally print such an announcement, your work based on the Program is not required to print an announcement.)

These requirements apply to the modified work as a whole. If identifiable sections of that work are not derived from the Program, and can be reasonably considered independent and separate works in themselves, then this License, and its terms, do not apply to those sections when you distribute them as separate works. But when you distribute the same sections as part of a whole which is a work based on the Program, the distribution of the whole must be on the terms of this License, whose permissions for other licensees extend to the entire whole, and thus to each and every part regardless of who wrote it.

Thus, it is not the intent of this section to claim rights or contest your rights to work written entirely by you; rather, the intent is to exercise the right to control the distribution of derivative or collective works based on the Program.

In addition, mere aggregation of another work not based on the Program with the Program (or with a work based on the Program) on a volume of a storage or distribution medium does not bring the other work under the scope of this License.

3. You may copy and distribute the Program in object code or executable form under the terms of Sections 1 and 2 above provided that you also do one of the following:

a) Accompany it with the complete corresponding machine-readable source code, which must be distributed under the terms of Sections 1 and 2 above on a medium customarily used for software interchange; or,

b) Accompany it with a written offer, valid for at least three years, to give any third party, for a charge no more than your cost of physically performing source distribution, a complete machine-readable copy of the corresponding source code, to be distributed under the terms of Sections 1 and 2 above on a

12. IN NO EVENT UNLESS REQUIRED BY APPLICABLE LAW OR AGREED TO IN WRITING WILL ANY COPYRIGHT HOLDER, OR ANY OTHER PARTY WHO MAY MODIFY AND/OR REDISTRIBUTE THE PROGRAM AS PERMITTED ABOVE, BE LIABLE TO YOU FOR DAMAGES, INCLUDING ANY GENERAL, SPECIAL, INCIDENTAL OR CONSEQUENTIAL DAMAGES ARISING OUT OF THE USE OR INABILITY TO USE THE PROGRAM (INCLUDING BUT NOT LIMITED TO LOSS OF DATA OR DATA BEING RENDERED INACCURATE OR LOSSES SUSTAINED BY YOU OR THIRD PARTIES OR A FAILURE OF THE PROGRAM TO OPERATE WITH ANY OTHER PROGRAMS), EVEN IF SUCH HOLDER OR OTHER PARTY HAS BEEN ADVISED OF THE POSSIBILITY OF SUCH DAMAGES. END OF TERMS AND CONDITIONS.

How to Apply These Terms to Your New Programs.

If you develop a new program, and you want it to be of the greatest possible use to the public, the best way to achieve this is to make it free software which everyone can redistribute and change under these terms.

To do so, attach the following notices to the program. It is safest to attach them to the start of each source file to most effectively convey the exclusion of warranty; and each file should have at least the "copyright" line and a pointer to where the full notice is found.

one line to give the program's name and an idea of what it does.

Copyright (C) yyyy name of author.

This program is free software; you can redistribute it and/or modify it under the terms of the GNU General Public License as published by the Free Software Foundation; either version 2 of the License, or (at your option) any later version.

This program is distributed in the hope that it will be useful, but WITHOUT ANY WARRANTY; without even the implied warranty of MERCHANTABILITY or FITNESS FOR A PARTICULAR PURPOSE. See the GNU General Public License for more details.

You should have received a copy of the GNU General Public License

along with this program; if not, write to the Free Software Foundation, Inc., 51 Franklin Street, Fifth Floor, Boston, MA 02110-1301, USA.

Also add information on how to contact you by electronic and paper mail.

If the program is interactive, make it output a short notice like this when it starts in an interactive mode:

Gnomovision version 69, Copyright (C) year name of author. Gnomovision comes with ABSOLUTELY NO WARRANTY; for details type `show w'. This is free software, and you are welcome to redistribute it under certain conditions; type `show c' for details. The hypothetical commands `show w' and `show c' should show the appropriate parts of the General Public License. Of course, the commands you use may be called something other than `show w' and `show c'; they could even be mouse-clicks or menu items--whatever suits your program.

You should also get your employer (if you work as a programmer) or your school, if any, to sign a "copyright disclaimer" for the program, if necessary. Here is a sample; alter the names:

Yoyodyne, Inc., hereby disclaims all copyright interest in the program 'Gnomovision' (which makes passes at compilers) written

by James Hacker. signature of Ty Coon, 1 April 1989.

Ty Coon, President of Vice.

This General Public License does not permit incorporating your program into proprietary programs. If your program is a subroutine library, you may consider it more useful to permit linking proprietary applications with the library. If this is what you want to do, use the GNU Lesser General Public License instead of this License.